



United States Congress

Joint Economic Committee

Est. 1946

Republicans

Representative David Schweikert, *Vice Chairman*



Wyoming Employment Update



October 2024 | Released November 19, 2024

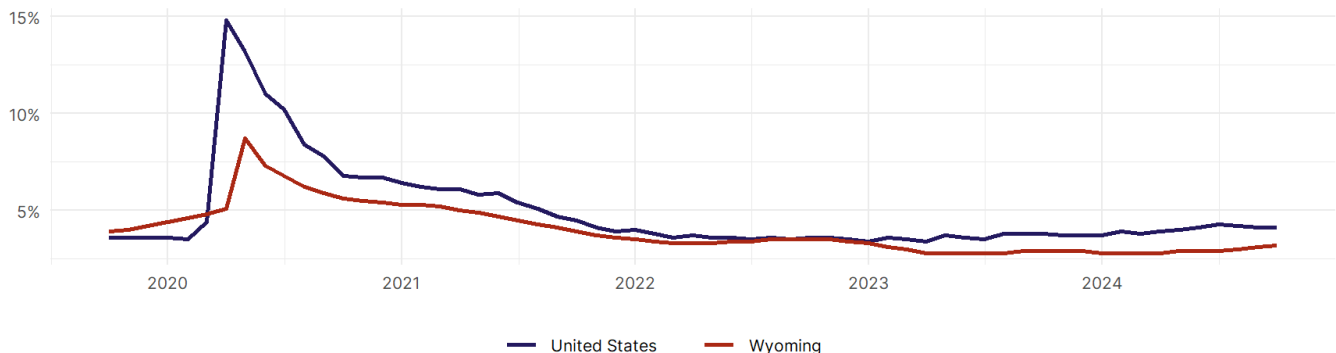
United States Employment Snapshot

- In October, among the 50 states and the District of Columbia **unemployment fell in 8, rose in 22, and remained unchanged in 21.**
- The highest unemployment rate was 5.7 percent in **District of Columbia and Nevada**, and the lowest was 1.9 percent in **South Dakota**. Nationally, the unemployment rate remained unchanged in October.
- In October, **payroll jobs rose in 21 states and fell in 30.** The largest payroll job percent increase was 0.4 percent in **Idaho**. The largest payroll job percent decline was 1 percent in **Washington**.

Wyoming Employment Snapshot

- In October, **Wyoming added 800 net payroll jobs** and the **unemployment rate rose by 0.1 percentage point to 3.2 percent.** In the prior month, Wyoming added 900 net payroll jobs.
- Over the past 12 months, **Wyoming added 2,800 net payroll jobs** and the **unemployment rate rose by 0.3 percentage points from 2.9 percent.**
- Nationally, nonfarm payrolls **rose by 12,000 in October, or 0 percent.** Wyoming **is tied for 35th** in the nation for percentage gain in nonfarm payroll employment over the past 12 months.
- In October, **Wyoming's private sector added 700 net private payroll jobs**, and over the past 12 months it added 2,100 private payroll jobs. In the prior month, Wyoming added 800 net private payroll jobs.
- In October, employment in Wyoming **fell by 4**, and over the past 12 months it fell by 489.
- **Wyoming's labor force participation rate remained steady at 63.2 percent** in October and **is tied for 24th** in the nation. In the past 12 months, the labor force participation rate has fallen by 0.5 percentage points.

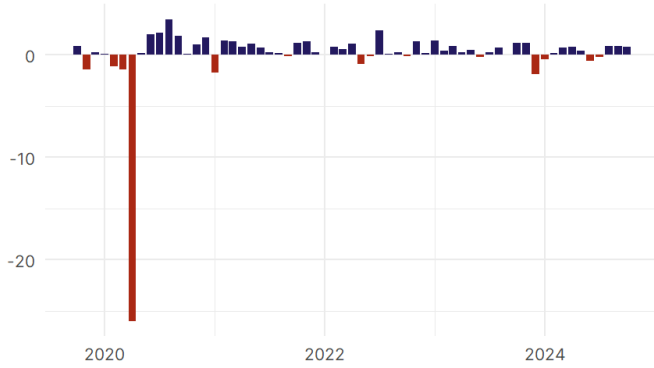
Wyoming
Unemployment Rate



Source: Bureau of Labor Statistics, data is seasonally adjusted

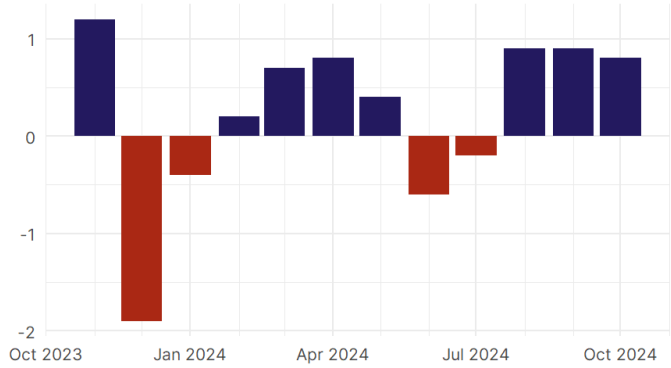
Wyoming Payroll Employment

Wyoming Nonfarm Payroll Jobs
Monthly change, past five years (thousands)



Source: Bureau of Labor Statistics, data is seasonally adjusted

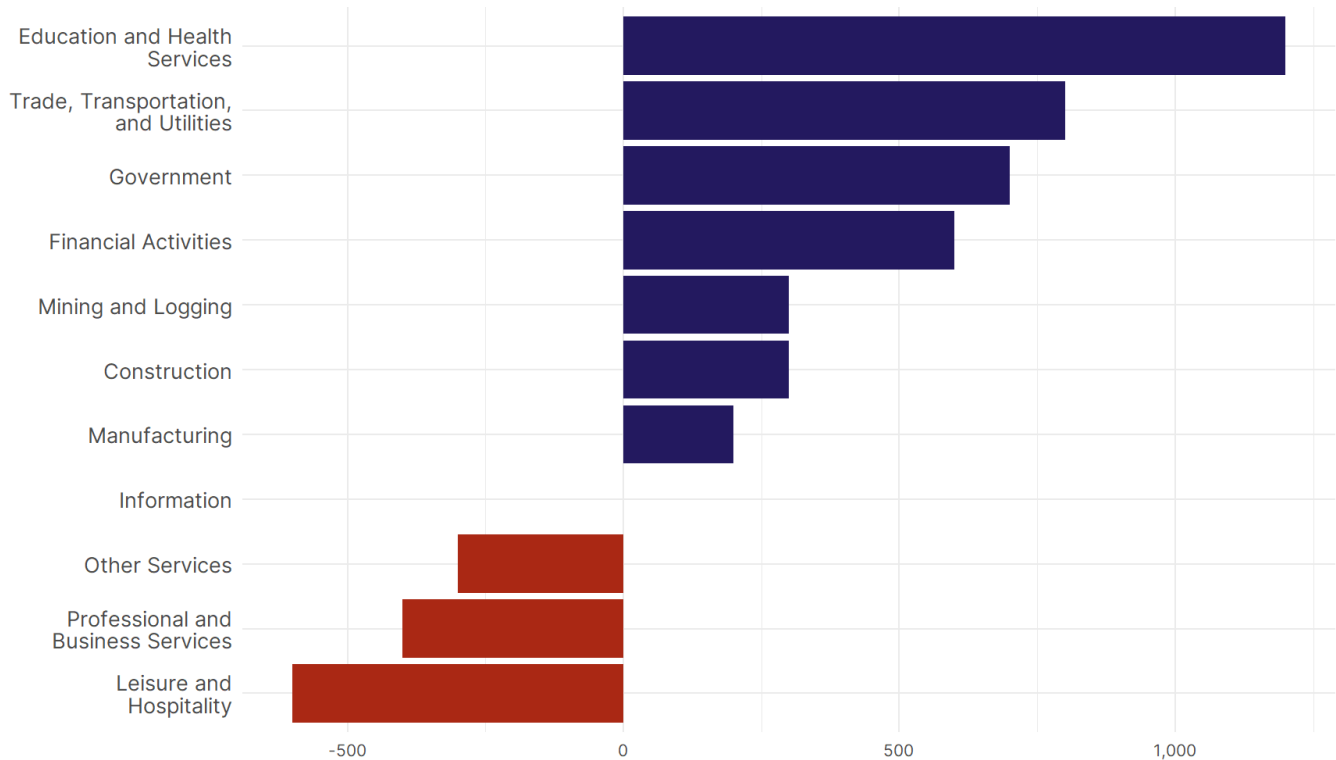
Wyoming Nonfarm Payroll Jobs
Monthly change, past 12 months (thousands)



Source: Bureau of Labor Statistics, data is seasonally adjusted

- **Wyoming added 800 net payroll jobs, or 0.3 percent,** on a seasonally adjusted basis during October. In the prior month, Wyoming added 900 jobs. Wyoming nonfarm payroll employment has increased in **8 of the past 12 months**.
- Nationally, nonfarm payrolls **rose by 12,000 in October, or 0 percent**. Wyoming is tied for 35th in the nation for percentage gain in nonfarm payroll employment over the past 12 months.
- **Wyoming added 700 private sector jobs, or 0.3 percent,** on a seasonally adjusted basis during October. In the prior month, Wyoming added 800 jobs. Wyoming private sector payroll employment has increased in **8 of the past 12 months**.
- Nationally, private sector payroll jobs **fell by 28,000 jobs in October, or 0 percent**. Wyoming is tied for 33rd in the nation for percentage gain in private sector payroll employment over the past 12 months.

Change in Wyoming
Payroll Employment by Sector
over past 12 months



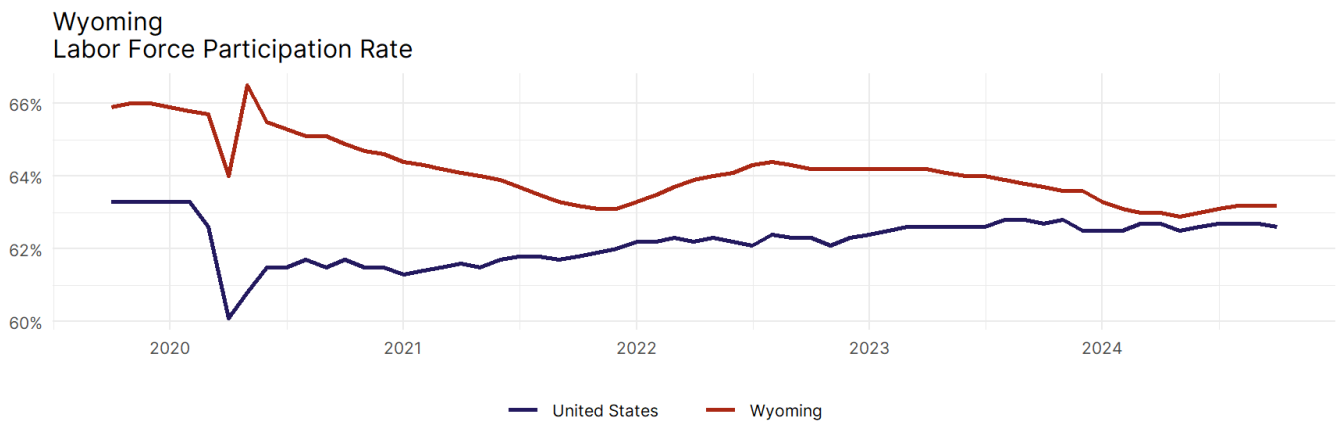
Source: Bureau of Labor Statistics, data is seasonally adjusted

- The best performing sectors on a seasonally adjusted basis during October were **Trade, Transportation, and Utilities (500)** and **Education and Health Services (200)**.
- The poorest performing sectors during the month were **Professional and Business Services (-200)** and **Leisure and Hospitality (-300)**.
- The best performing sectors during the last 12 months were **Education and Health Services (1,200)** and **Trade, Transportation, and Utilities (800)**.
- The poorest performing sectors during the last 12 months were **Professional and Business Services (-400)** and **Leisure and Hospitality (-600)**.

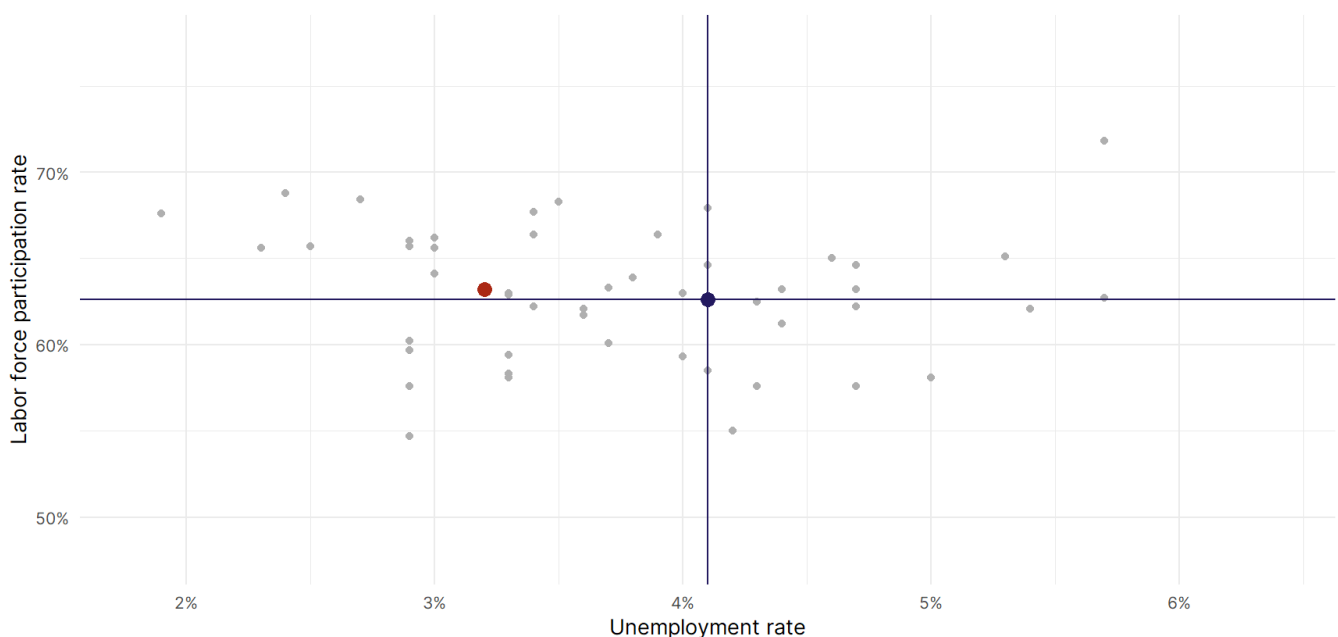
Wyoming Labor Force

The labor force participation rate is the percentage of the civilian noninstitutionalized population age 16 and older who are employed or actively looking for work.

- The labor force participation rate in **Wyoming remained unchanged at 63.2 percent in October**.
- **Wyoming is tied for 24th** in the nation.
- The 10-year high for the labor force participation rate in Wyoming was **67.4 percent** in October 2014, and the 10-year low was **62.9 percent** in May 2024.
- The national labor force participation rate **fell by 0.1 percentage points to 62.6 percent** in October.



Source: Bureau of Labor Statistics, data is seasonally adjusted



Source: Bureau of Labor Statistics, data is seasonally adjusted