



United States Congress

# Joint Economic Committee

Est. 1946

Republicans

Representative David Schweikert, *Vice Chairman*



# Pennsylvania

## Employment Update



October 2024 | Released November 19, 2024

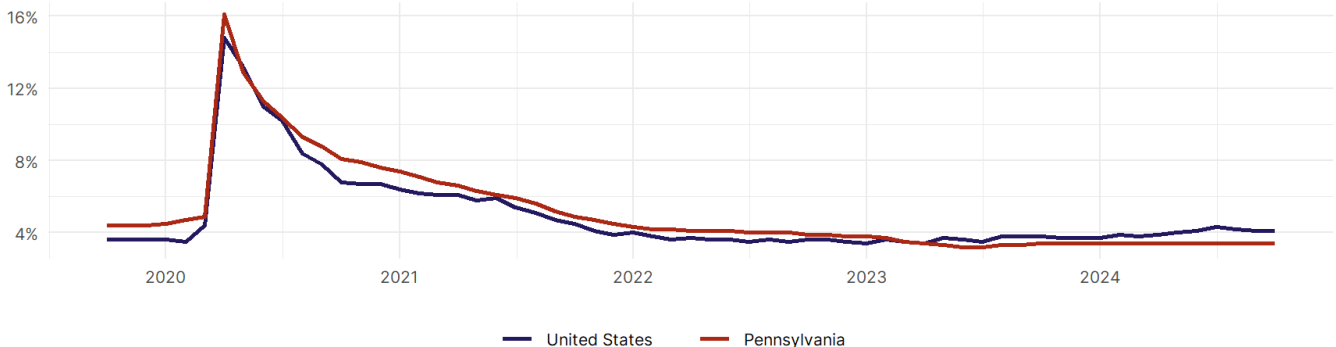
### United States Employment Snapshot

- In October, among the 50 states and the District of Columbia **unemployment fell in 8, rose in 22, and remained unchanged in 21.**
- The highest unemployment rate was 5.7 percent in **District of Columbia and Nevada**, and the lowest was 1.9 percent in **South Dakota**. Nationally, the unemployment rate remained unchanged in October.
- In October, **payroll jobs rose in 21 states and fell in 30.** The largest payroll job percent increase was 0.4 percent in **Idaho**. The largest payroll job percent decline was 1 percent in **Washington**.

### Pennsylvania Employment Snapshot

- In October, **Pennsylvania lost 1,400 net payroll jobs** and the **unemployment rate remained unchanged at 3.4 percent.** In the prior month, Pennsylvania added 7,900 net payroll jobs.
- Over the past 12 months, **Pennsylvania added 97,800 net payroll jobs** and the **unemployment rate remained unchanged.**
- Nationally, nonfarm payrolls **rose by 12,000 in October, or 0 percent.** Pennsylvania **is tied for 14th** in the nation for percentage gain in nonfarm payroll employment over the past 12 months.
- In October, **Pennsylvania's private sector lost 2,000 net private payroll jobs**, and over the past 12 months it added 91,000 private payroll jobs. In the prior month, Pennsylvania added 8,400 net private payroll jobs.
- In October, employment in Pennsylvania **fell by 26,170**, and over the past 12 months it fell by 8,833.
- **Pennsylvania's labor force participation rate fell to 62.2 percent** in October from 62.4 percent and **is tied for 32nd** in the nation. In the past 12 months, the labor force participation rate has fallen by 0.1 percentage points.

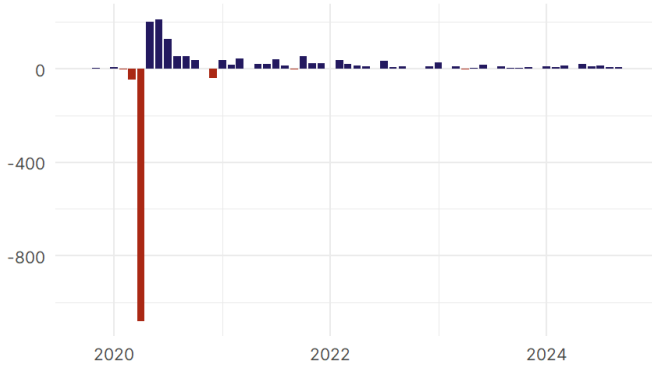
Pennsylvania  
Unemployment Rate



Source: Bureau of Labor Statistics, data is seasonally adjusted

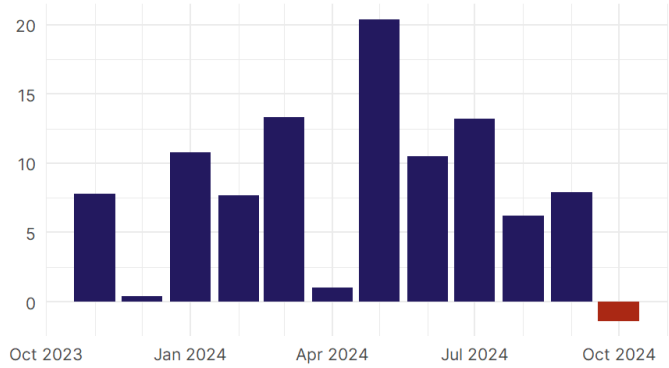
## Pennsylvania Payroll Employment

Pennsylvania Nonfarm Payroll Jobs  
Monthly change, past five years (thousands)



Source: Bureau of Labor Statistics, data is seasonally adjusted

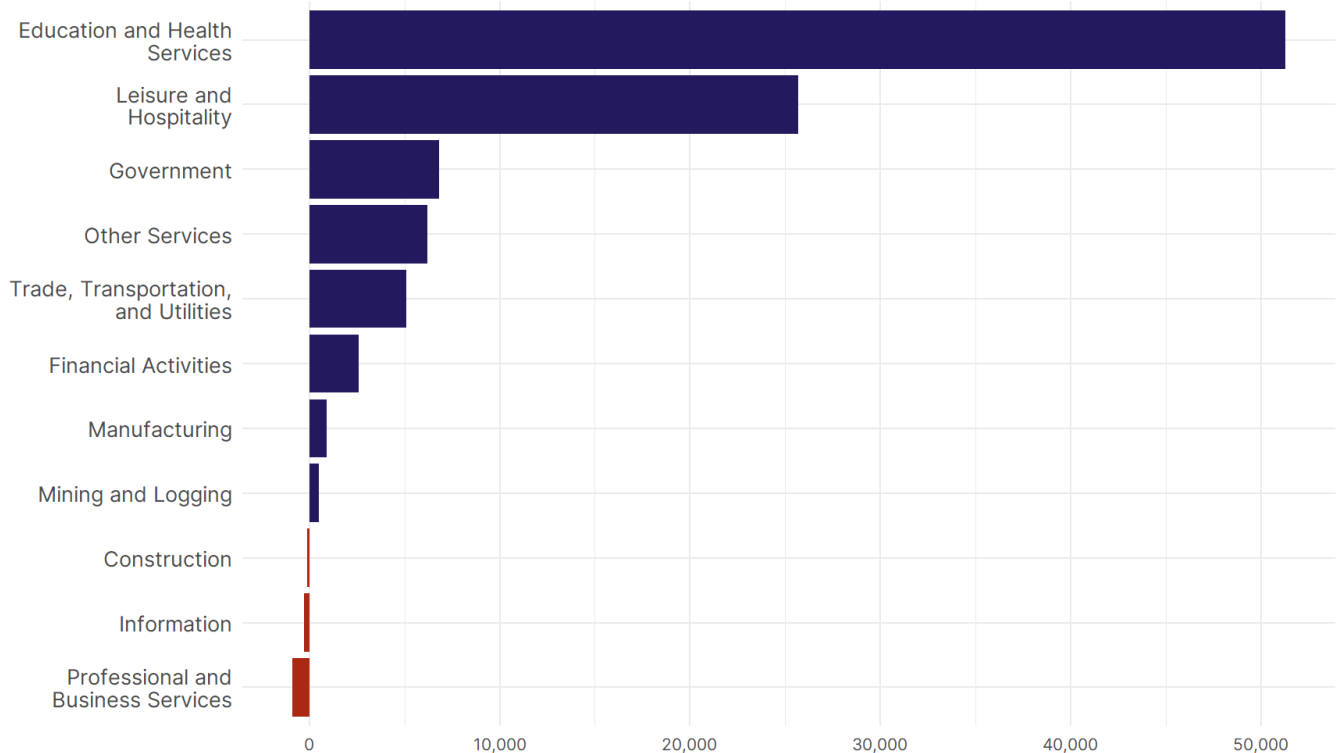
Pennsylvania Nonfarm Payroll Jobs  
Monthly change, past 12 months (thousands)



Source: Bureau of Labor Statistics, data is seasonally adjusted

- **Pennsylvania lost 1,400 net payroll jobs, or 0 percent**, on a seasonally adjusted basis during October. In the prior month, Pennsylvania added 7,900 jobs. Pennsylvania nonfarm payroll employment has increased in **11 of the past 12 months**.
- Nationally, nonfarm payrolls **rose by 12,000 in October, or 0 percent**. Pennsylvania is tied for 14th in the nation for percentage gain in nonfarm payroll employment over the past 12 months.
- **Pennsylvania lost 2,000 private sector jobs, or 0 percent**, on a seasonally adjusted basis during October. In the prior month, Pennsylvania added 8,400 jobs. Pennsylvania private sector payroll employment has increased in **10 of the past 12 months**.
- Nationally, private sector payroll jobs **fell by 28,000 jobs in October, or 0 percent**. Pennsylvania is tied for 12th in the nation for percentage gain in private sector payroll employment over the past 12 months.

Change in Pennsylvania Payroll Employment by Sector over past 12 months



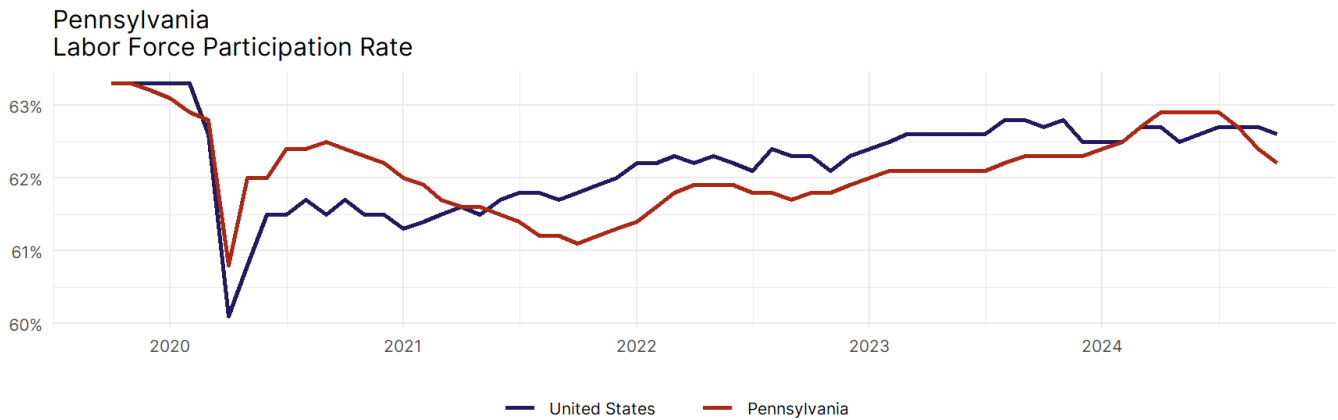
Source: Bureau of Labor Statistics, data is seasonally adjusted

- The best performing sectors on a seasonally adjusted basis during October were **Leisure and Hospitality (1,500)** and **Trade, Transportation, and Utilities (1,200)**.
- The poorest performing sectors during the month were **Manufacturing (-1,700)** and **Professional and Business Services (-4,500)**.
- The best performing sectors during the last 12 months were **Education and Health Services (51,300)** and **Leisure and Hospitality (25,700)**.
- The poorest performing sectors during the last 12 months were **Information (-300)** and **Professional and Business Services (-900)**.

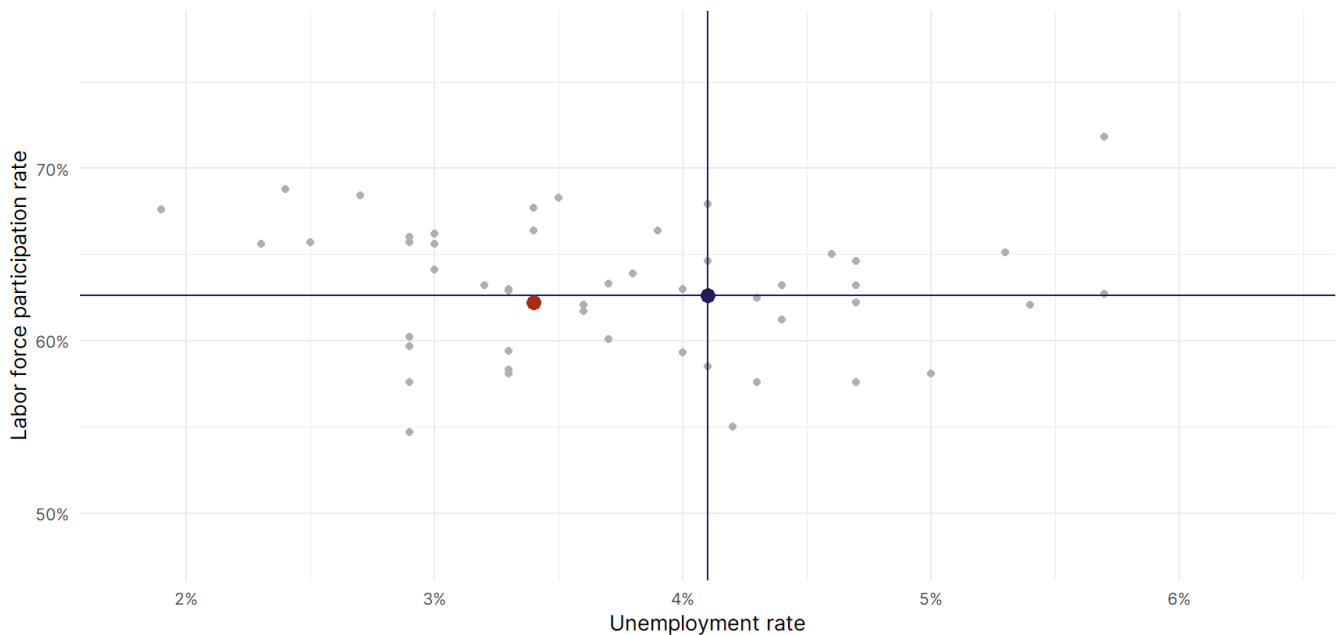
### Pennsylvania Labor Force

The labor force participation rate is the percentage of the civilian noninstitutionalized population age 16 and older who are employed or actively looking for work.

- The labor force participation rate in **Pennsylvania fell to 62.2 percent in October from 62.4 percent in the prior month.**
- **Pennsylvania is tied for 32nd** in the nation.
- The 10-year high for the labor force participation rate in Pennsylvania was **63.3 percent** occurring in November 2019, and the 10-year low was **60.8 percent** in April 2020.
- The national labor force participation rate **fell by 0.1 percentage points to 62.6 percent** in October.



Source: Bureau of Labor Statistics, data is seasonally adjusted



Source: Bureau of Labor Statistics, data is seasonally adjusted