



United States Congress

# Joint Economic Committee

Est. 1946

Republicans

Representative David Schweikert, *Vice Chairman*



## Oregon Employment Update



October 2024 | Released November 19, 2024

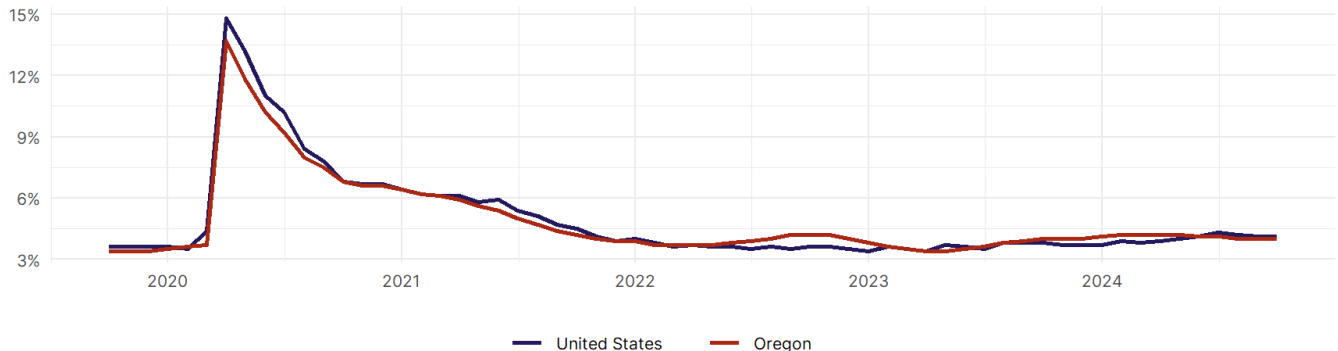
### United States Employment Snapshot

- In October, among the 50 states and the District of Columbia **unemployment fell in 8, rose in 22, and remained unchanged in 21.**
- The highest unemployment rate was 5.7 percent in **District of Columbia and Nevada**, and the lowest was 1.9 percent in **South Dakota**. Nationally, the unemployment rate remained unchanged in October.
- In October, **payroll jobs rose in 21 states and fell in 30.** The largest payroll job percent increase was 0.4 percent in **Idaho**. The largest payroll job percent decline was 1 percent in **Washington**.

### Oregon Employment Snapshot

- In October, **Oregon added 1,700 net payroll jobs** and the **unemployment rate remained unchanged at 4 percent.** In the prior month, Oregon added 900 net payroll jobs.
- Over the past 12 months, **Oregon added 13,800 net payroll jobs** and the **unemployment rate remained unchanged.**
- Nationally, nonfarm payrolls **rose by 12,000 in October, or 0 percent.** Oregon **is tied for 44th** in the nation for percentage gain in nonfarm payroll employment over the past 12 months.
- In October, **Oregon's private sector remained unchanged with 0 net private payroll jobs**, and over the past 12 months it added 6,300 private payroll jobs. In the prior month, Oregon added 500 net private payroll jobs.
- In October, employment in Oregon **rose by 906**, and over the past 12 months it rose by 22,642.
- **Oregon's labor force participation rate remained steady at 63 percent** in October and **is tied for 27th** in the nation. In the past 12 months, the labor force participation rate has risen by 0.5 percentage points.

Oregon  
Unemployment Rate

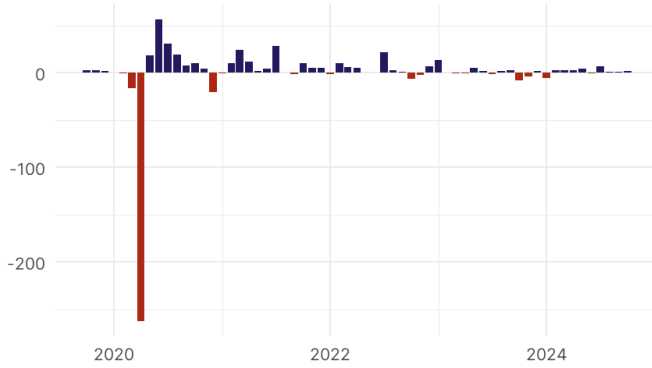


Source: Bureau of Labor Statistics, data is seasonally adjusted

## Oregon Payroll Employment

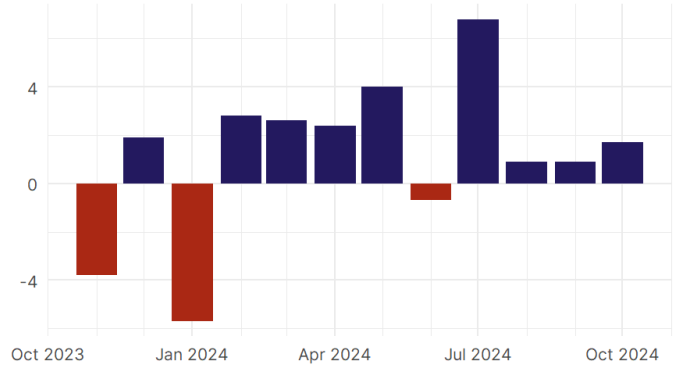
### Oregon Nonfarm Payroll Jobs

Monthly change, past five years (thousands)



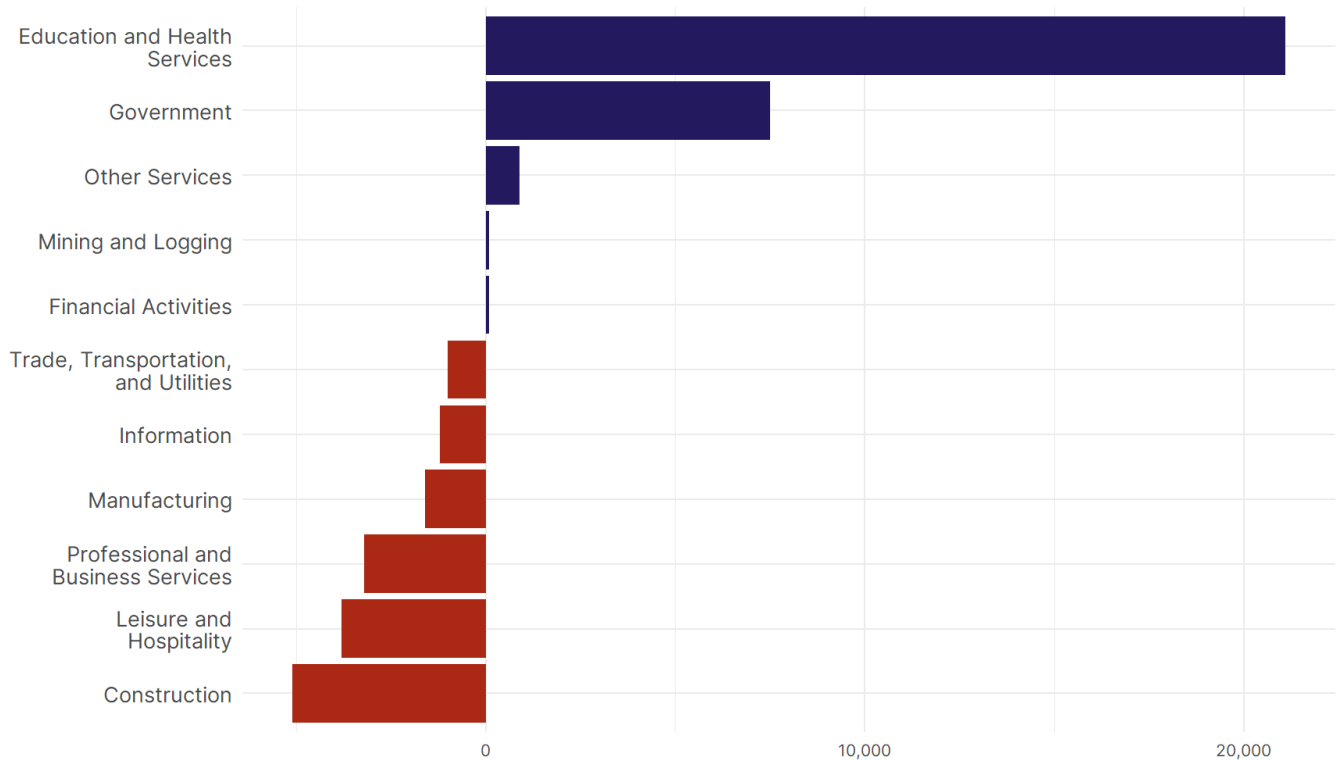
### Oregon Nonfarm Payroll Jobs

Monthly change, past 12 months (thousands)



- **Oregon added 1,700 net payroll jobs, or 0.1 percent,** on a seasonally adjusted basis during October. In the prior month, Oregon added 900 jobs. Oregon nonfarm payroll employment has increased in **9 of the past 12 months.**
- Nationally, nonfarm payrolls **rose by 12,000 in October, or 0 percent.** Oregon is tied for 44th in the nation for percentage gain in nonfarm payroll employment over the past 12 months.
- **Oregon remained unchanged with 0 private sector jobs, or 0 percent,** on a seasonally adjusted basis during October. In the prior month, Oregon added 500 jobs. Oregon private sector payroll employment has increased in **8 of the past 12 months.**
- Nationally, private sector payroll jobs **fell by 28,000 jobs in October, or 0 percent.** Oregon ranks 46th in the nation for percentage gain in private sector payroll employment over the past 12 months.

### Change in Oregon Payroll Employment by Sector over past 12 months



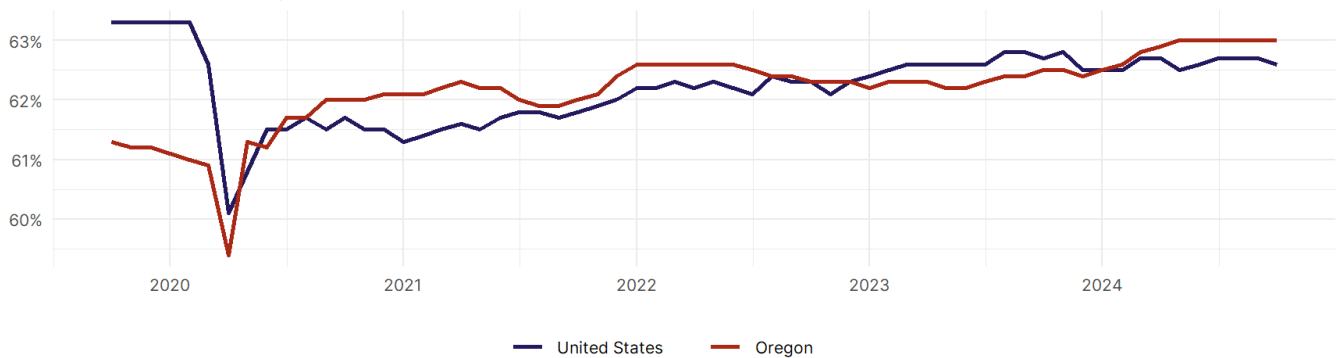
- The best performing sectors on a seasonally adjusted basis during October were **Education and Health Services (2,700)** and **Government (1,700)**.
- The poorest performing sectors during the month were **Manufacturing (-1,200)** and **Professional and Business Services (-2,400)**.
- The best performing sectors during the last 12 months were **Education and Health Services (21,100)** and **Government (7,500)**.
- The poorest performing sectors during the last 12 months were **Leisure and Hospitality (-3,800)** and **Construction (-5,100)**.

### Oregon Labor Force

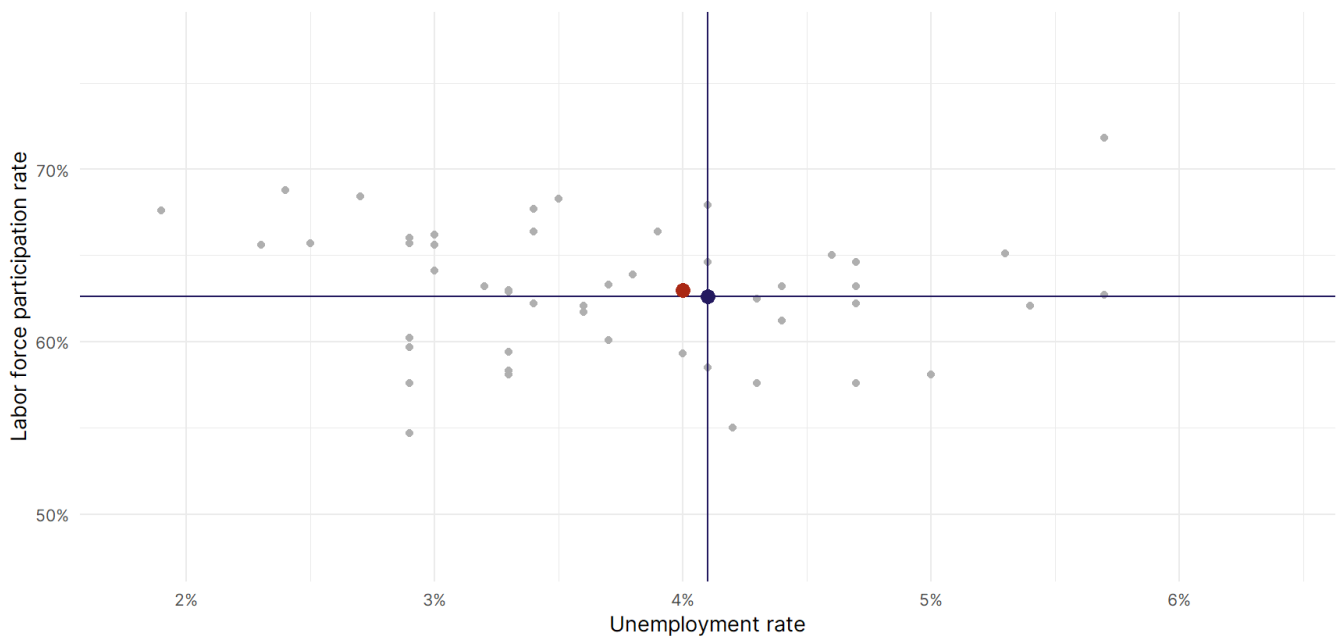
The labor force participation rate is the percentage of the civilian noninstitutionalized population age 16 and older who are employed or actively looking for work.

- The labor force participation rate in **Oregon remained unchanged at 63 percent in October**.
- **Oregon is tied for 27th** in the nation.
- The 10-year high for the labor force participation rate in Oregon was **63 percent** occurring in October 2024, and the 10-year low was **59.4 percent** in April 2020.
- The national labor force participation rate **fell by 0.1 percentage points to 62.6 percent** in October.

Oregon Labor Force Participation Rate



Source: Bureau of Labor Statistics, data is seasonally adjusted



Source: Bureau of Labor Statistics, data is seasonally adjusted