



United States Congress

Joint Economic Committee

Est. 1946

Republicans

Representative David Schweikert, *Vice Chairman*



Nebraska

Employment Update



October 2024 | Released November 19, 2024

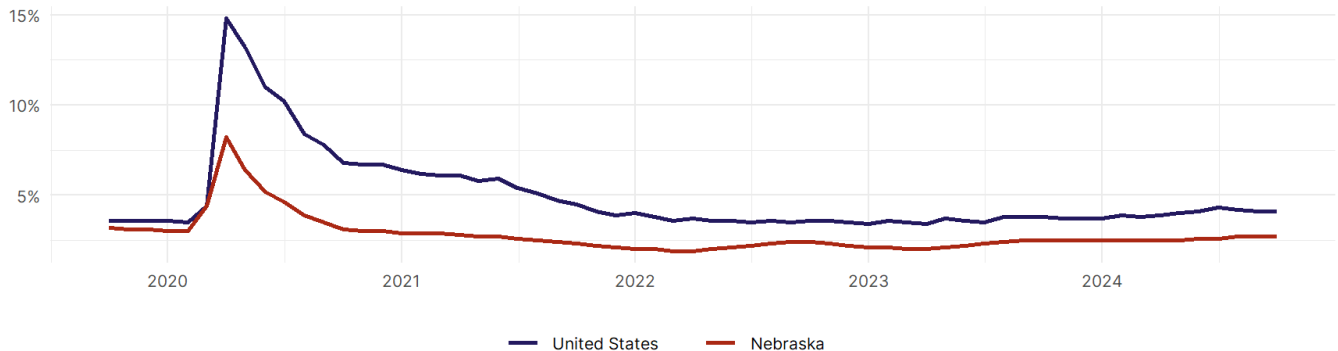
United States Employment Snapshot

- In October, among the 50 states and the District of Columbia **unemployment fell in 8, rose in 22, and remained unchanged in 21.**
- The highest unemployment rate was 5.7 percent in **District of Columbia and Nevada**, and the lowest was 1.9 percent in **South Dakota**. Nationally, the unemployment rate remained unchanged in October.
- In October, **payroll jobs rose in 21 states and fell in 30.** The largest payroll job percent increase was 0.4 percent in **Idaho**. The largest payroll job percent decline was 1 percent in **Washington**.

Nebraska Employment Snapshot

- In October, **Nebraska added 2,200 net payroll jobs** and the **unemployment rate remained unchanged at 2.7 percent.** In the prior month, Nebraska added 3,200 net payroll jobs.
- Over the past 12 months, **Nebraska added 22,400 net payroll jobs** and the **unemployment rate rose by 0.2 percentage points from 2.5 percent.**
- Nationally, nonfarm payrolls **rose by 12,000 in October, or 0 percent.** Nebraska **is tied for 6th** in the nation for percentage gain in nonfarm payroll employment over the past 12 months.
- In October, **Nebraska's private sector added 2,100 net private payroll jobs**, and over the past 12 months it added 19,700 private payroll jobs. In the prior month, Nebraska added 2,300 net private payroll jobs.
- In October, employment in Nebraska **rose by 1,101**, and over the past 12 months it fell by 2,506.
- **Nebraska's labor force participation rate rose to 68.4 percent** in October from 68.3 percent and **ranks 3rd** in the nation. In the past 12 months, the labor force participation rate has fallen by 0.6 percentage points.

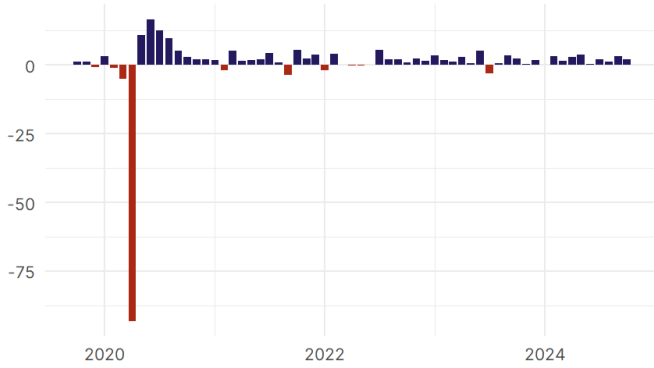
Nebraska
Unemployment Rate



Source: Bureau of Labor Statistics, data is seasonally adjusted

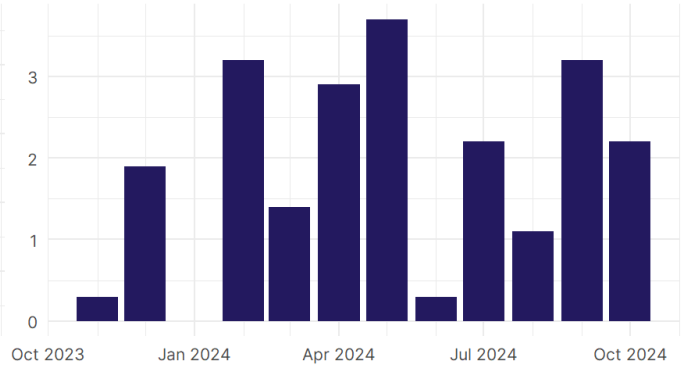
Nebraska Payroll Employment

Nebraska Nonfarm Payroll Jobs
Monthly change, past five years (thousands)



Source: Bureau of Labor Statistics, data is seasonally adjusted

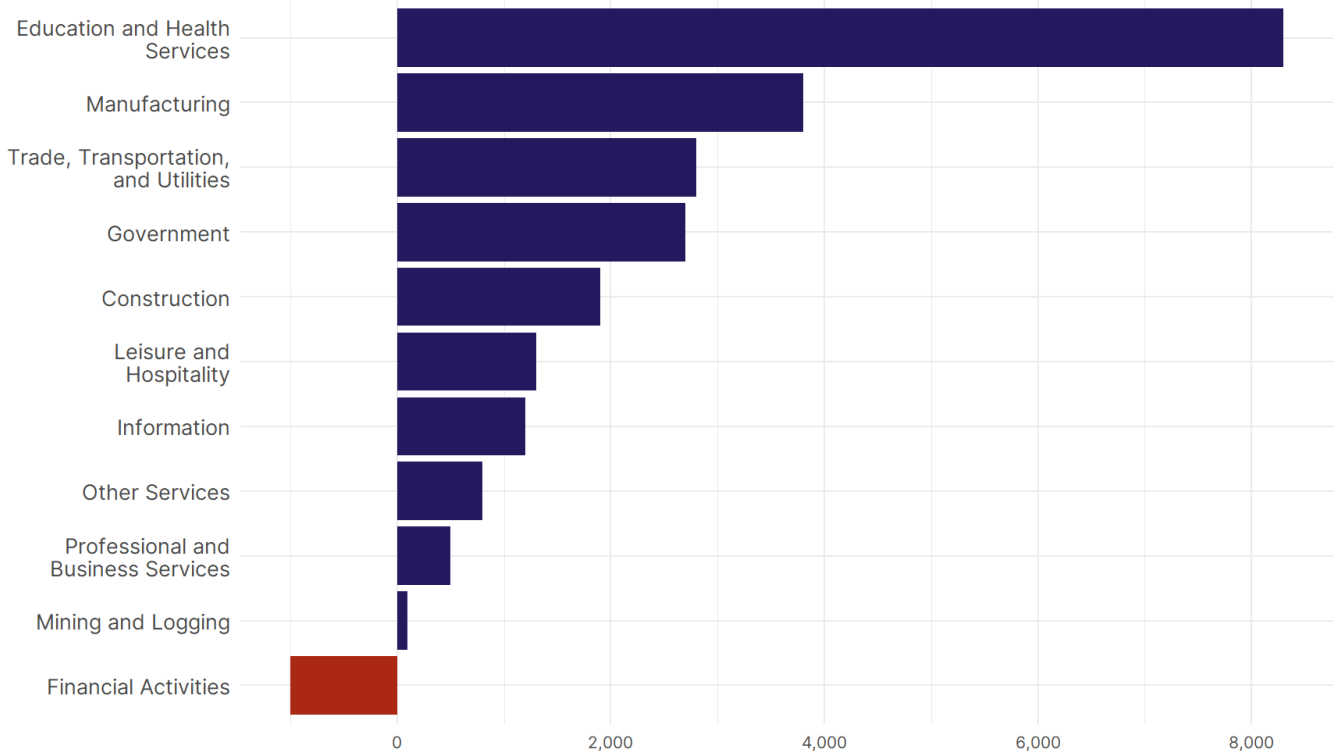
Nebraska Nonfarm Payroll Jobs
Monthly change, past 12 months (thousands)



Source: Bureau of Labor Statistics, data is seasonally adjusted

- **Nebraska added 2,200 net payroll jobs, or 0.2 percent,** on a seasonally adjusted basis during October. In the prior month, Nebraska added 3,200 jobs. Nebraska nonfarm payroll employment has increased in **11 of the past 12 months.**
- Nationally, nonfarm payrolls **rose by 12,000 in October, or 0 percent.** Nebraska is tied for 6th in the nation for percentage gain in nonfarm payroll employment over the past 12 months.
- **Nebraska added 2,100 private sector jobs, or 0.2 percent,** on a seasonally adjusted basis during October. In the prior month, Nebraska added 2,300 jobs. Nebraska private sector payroll employment has increased in **11 of the past 12 months.**
- Nationally, private sector payroll jobs **fell by 28,000 jobs in October, or 0 percent.** Nebraska is tied for 7th in the nation for percentage gain in private sector payroll employment over the past 12 months.

Change in Nebraska
Payroll Employment by Sector
over past 12 months



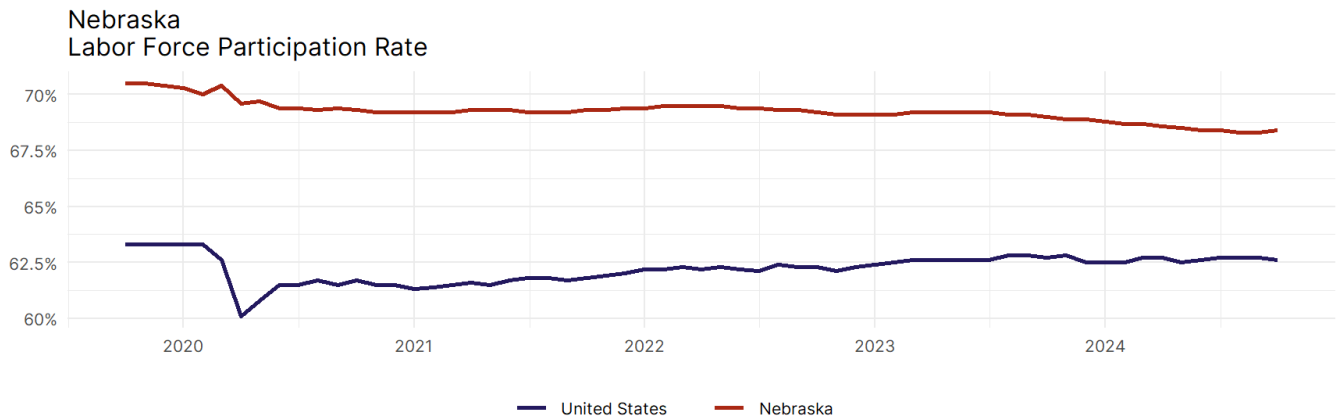
Source: Bureau of Labor Statistics, data is seasonally adjusted

- The best performing sectors on a seasonally adjusted basis during October were **Education and Health Services (800)** and **Manufacturing (400)**.
- The poorest performing sectors during the month were **Government (100)** and **Mining and Logging tied with Trade, Transportation, and Utilities; and Professional and Business Services; and Other Services (0)**.
- The best performing sectors during the last 12 months were **Education and Health Services (8,300)** and **Manufacturing (3,800)**.
- The poorest performing sectors during the last 12 months were **Mining and Logging (100)** and **Financial Activities (-1,000)**.

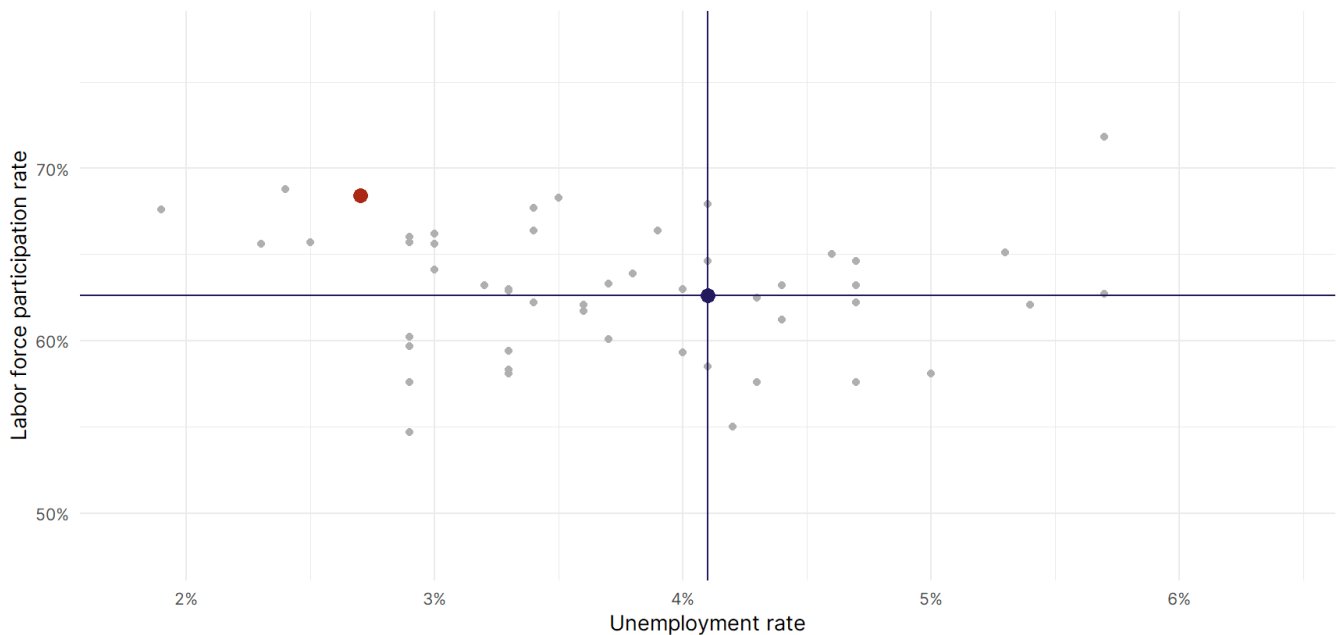
Nebraska Labor Force

The labor force participation rate is the percentage of the civilian noninstitutionalized population age 16 and older who are employed or actively looking for work.

- The labor force participation rate in **Nebraska rose to 68.4 percent in October from 68.3 percent in the prior month.**
- **Nebraska ranks 3rd** in the nation.
- The 10-year high for the labor force participation rate in Nebraska was **70.5 percent** occurring in November 2019, and the 10-year low was **68.3 percent** occurring in September 2024.
- The national labor force participation rate **fell by 0.1 percentage points to 62.6 percent** in October.



Source: Bureau of Labor Statistics, data is seasonally adjusted



Source: Bureau of Labor Statistics, data is seasonally adjusted