



United States Congress

Joint Economic Committee

Est. 1946

Republicans

Representative David Schweikert, *Vice Chairman*



Missouri Employment Update



September 2024 | Released October 22, 2024

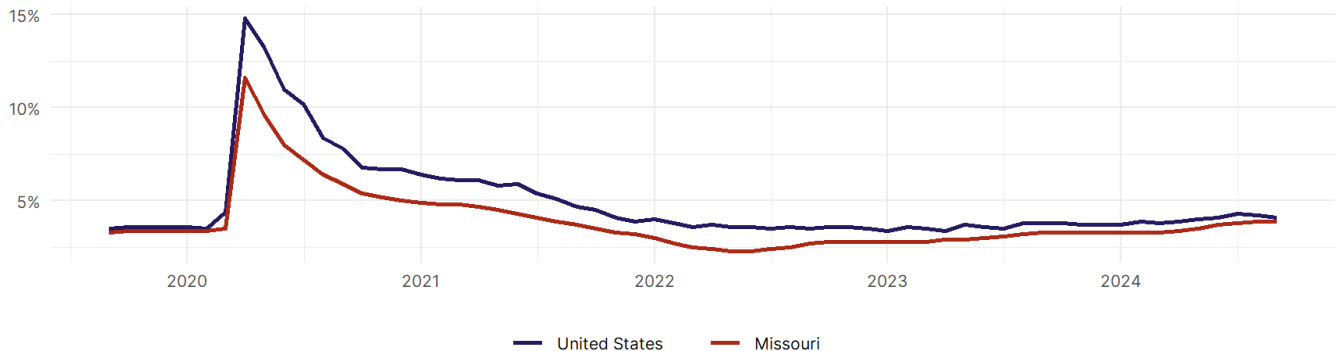
United States Employment Snapshot

- In September, among the 50 states and the District of Columbia **unemployment fell in 3, rose in 16, and remained unchanged in 32.**
- The highest unemployment rate was 5.7 percent in **District of Columbia**, and the lowest was 2 percent in **South Dakota**. Nationally, the unemployment rate fell by 0.1 percentage point to 4.1 percent.
- In September, **payroll jobs rose in 42 states and fell in 8.** The largest payroll job percent increase was 0.7 percent in **Idaho**. The largest payroll job percent decline was 0.3 percent in **Iowa**.

Missouri Employment Snapshot

- In September, **Missouri lost 900 net payroll jobs** and the **unemployment rate remained unchanged at 3.9 percent.** In the prior month, Missouri added 6,800 net payroll jobs.
- Over the past 12 months, **Missouri added 86,500 net payroll jobs** and the **unemployment rate rose by 0.6 percentage points from 3.3 percent.**
- Nationally, nonfarm payrolls **rose by 254,000 in September, or 0.2 percent.** Missouri is **tied for 4th** in the nation for percentage gain in nonfarm payroll employment over the past 12 months.
- In September, **Missouri's private sector lost 1,300 net private payroll jobs**, and over the past 12 months it added 73,500 private payroll jobs. In the prior month, Missouri added 4,700 net private payroll jobs.
- In September, employment in Missouri **rose by 2,131**, and over the past 12 months it rose by 31,420.
- **Missouri's labor force participation rate remained steady at 63.9 percent** in September and **ranks 22nd** in the nation. In the past 12 months, the labor force participation rate has risen by 0.7 percentage points.

Missouri
Unemployment Rate

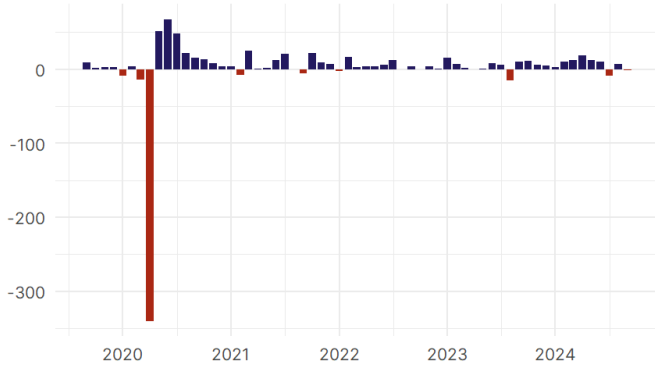


Source: Bureau of Labor Statistics, data is seasonally adjusted

Missouri Payroll Employment

Missouri Nonfarm Payroll Jobs

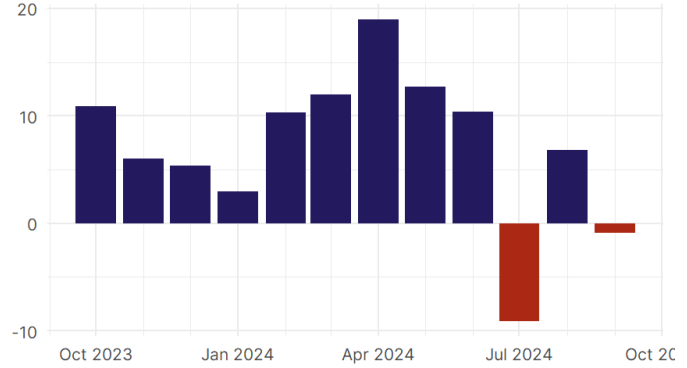
Monthly change, past five years (thousands)



Source: Bureau of Labor Statistics, data is seasonally adjusted

Missouri Nonfarm Payroll Jobs

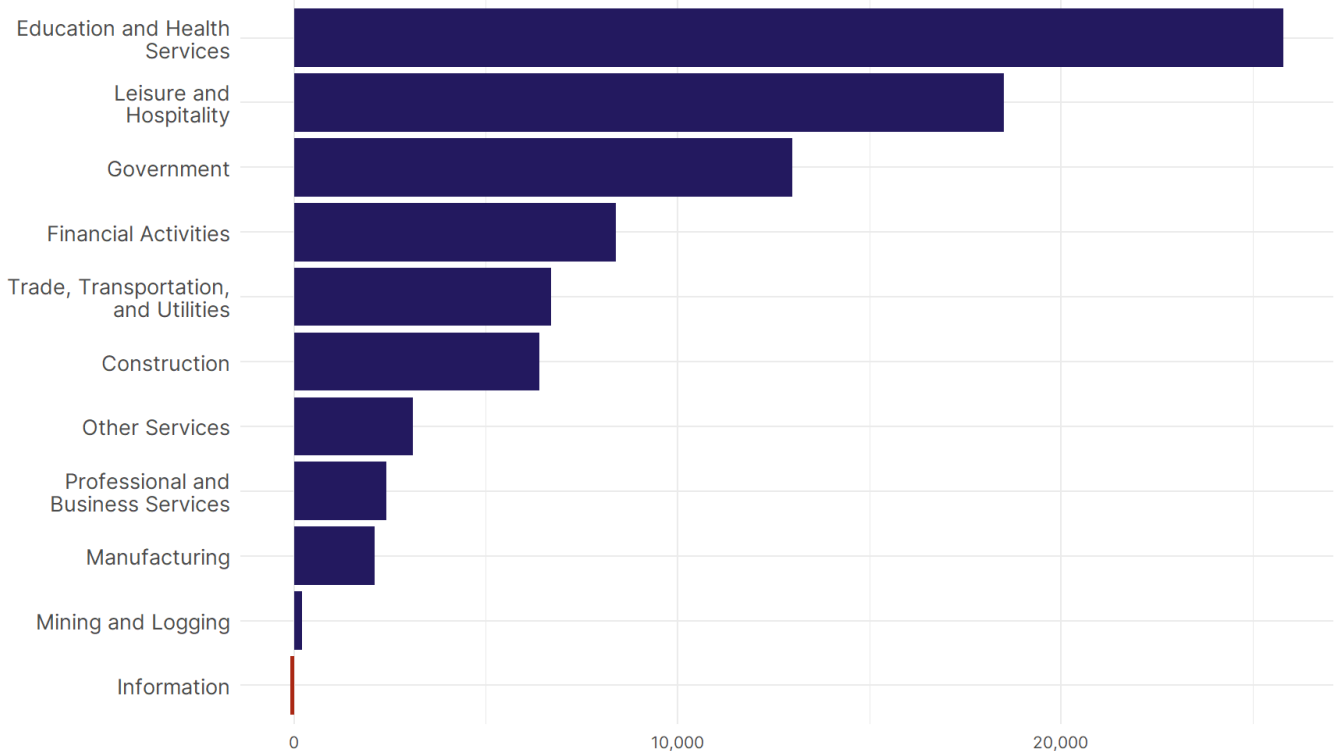
Monthly change, past 12 months (thousands)



Source: Bureau of Labor Statistics, data is seasonally adjusted

- **Missouri lost 900 net payroll jobs, or 0 percent**, on a seasonally adjusted basis during September. In the prior month, Missouri added 6,800 jobs. Missouri nonfarm payroll employment has increased in **10 of the past 12 months**.
- Nationally, nonfarm payrolls **rose by 254,000 in September, or 0.2 percent**. Missouri is tied for 4th in the nation for percentage gain in nonfarm payroll employment over the past 12 months.
- **Missouri lost 1,300 private sector jobs, or 0 percent**, on a seasonally adjusted basis during September. In the prior month, Missouri added 4,700 jobs. Missouri private sector payroll employment has increased in **10 of the past 12 months**.
- Nationally, private sector payroll jobs **rose by 223,000 jobs in September, or 0.2 percent**. Missouri ranks 5th in the nation for percentage gain in private sector payroll employment over the past 12 months.

Change in Missouri Payroll Employment by Sector over past 12 months



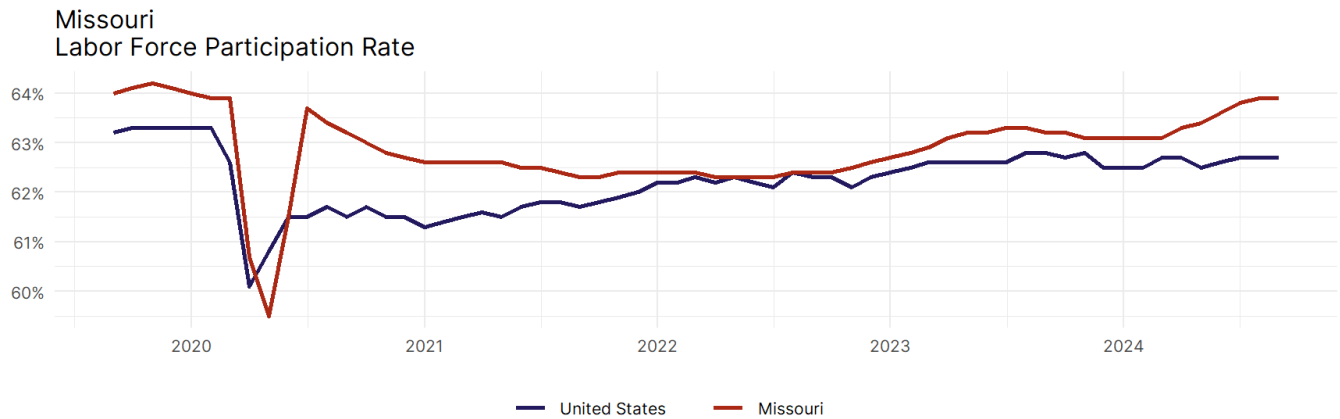
Source: Bureau of Labor Statistics, data is seasonally adjusted

- The best performing sectors on a seasonally adjusted basis during September were **Financial Activities (1,200)** and **Education and Health Services (900)**.
- The poorest performing sectors during the month were **Trade, Transportation, and Utilities (-1,200)** and **Leisure and Hospitality (-1,600)**.
- The best performing sectors during the last 12 months were **Education and Health Services (25,800)** and **Leisure and Hospitality (18,500)**.
- The poorest performing sectors during the last 12 months were **Mining and Logging (200)** and **Information (-100)**.

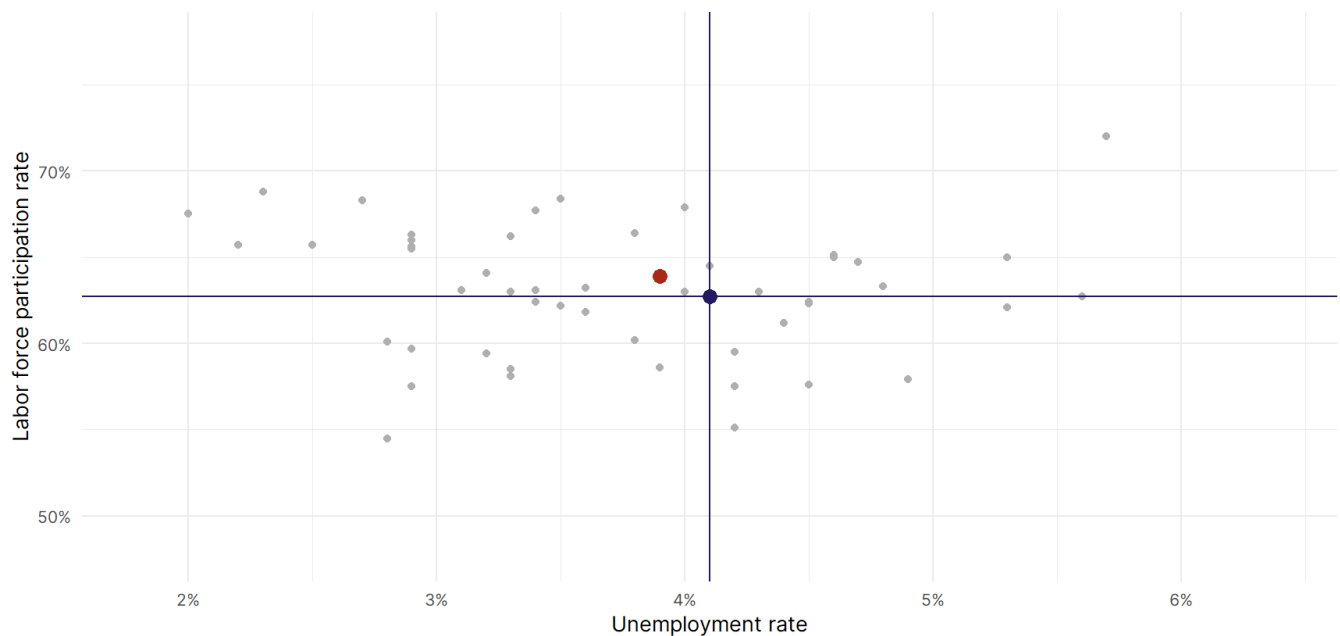
Missouri Labor Force

The labor force participation rate is the percentage of the civilian noninstitutionalized population age 16 and older who are employed or actively looking for work.

- The labor force participation rate in **Missouri remained unchanged at 63.9 percent in September**.
- **Missouri ranks 22nd** in the nation.
- The 10-year high for the labor force participation rate in Missouri was **64.7 percent** occurring in August 2016, and the 10-year low was **59.5 percent** in May 2020.
- The national labor force participation rate **remained steady at 62.7 percent** in September.



Source: Bureau of Labor Statistics, data is seasonally adjusted



Source: Bureau of Labor Statistics, data is seasonally adjusted