



United States Congress

# Joint Economic Committee

Est. 1946

Republicans

Representative David Schweikert, *Vice Chairman*



# Mississippi

## Employment Update



October 2024 | Released November 19, 2024

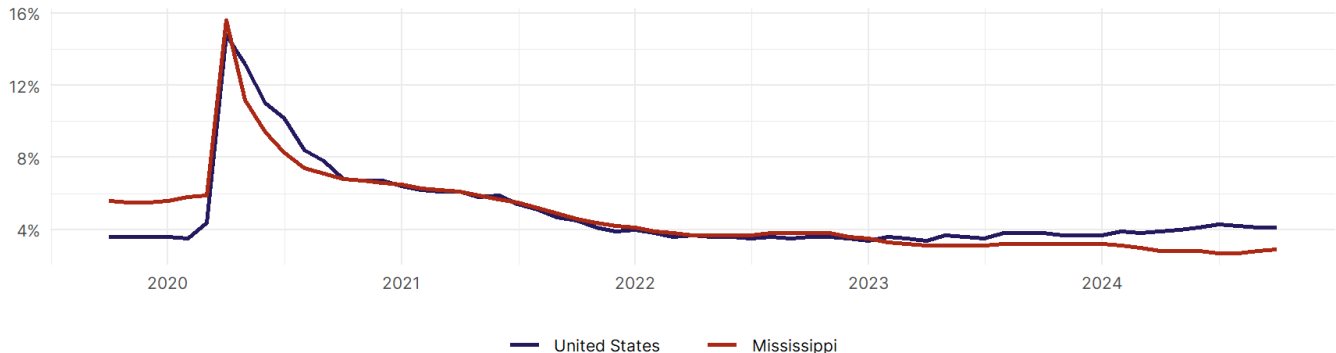
### United States Employment Snapshot

- In October, among the 50 states and the District of Columbia **unemployment fell in 8, rose in 22, and remained unchanged in 21.**
- The highest unemployment rate was 5.7 percent in **District of Columbia and Nevada**, and the lowest was 1.9 percent in **South Dakota**. Nationally, the unemployment rate remained unchanged in October.
- In October, **payroll jobs rose in 21 states and fell in 30.** The largest payroll job percent increase was 0.4 percent in **Idaho**. The largest payroll job percent decline was 1 percent in **Washington**.

### Mississippi Employment Snapshot

- In October, **Mississippi added 4,700 net payroll jobs** and the **unemployment rate rose by 0.1 percentage point to 2.9 percent.** In the prior month, Mississippi added 3,000 net payroll jobs.
- Over the past 12 months, **Mississippi added 13,000 net payroll jobs** and the **unemployment rate fell by 0.3 percentage points from 3.2 percent.**
- Nationally, nonfarm payrolls **rose by 12,000 in October, or 0 percent.** Mississippi **is tied for 33rd** in the nation for percentage gain in nonfarm payroll employment over the past 12 months.
- In October, **Mississippi's private sector added 4,500 net private payroll jobs**, and over the past 12 months it added 11,000 private payroll jobs. In the prior month, Mississippi added 2,900 net private payroll jobs.
- In October, employment in Mississippi **rose by 3,049**, and over the past 12 months it rose by 27,788.
- **Mississippi's labor force participation rate rose to 54.7 percent** in October from 54.5 percent and **ranks 51st** in the nation. In the past 12 months, the labor force participation rate has risen by 0.8 percentage points.

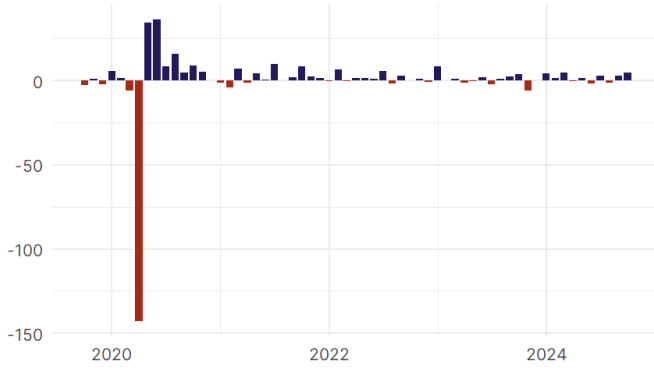
Mississippi Unemployment Rate



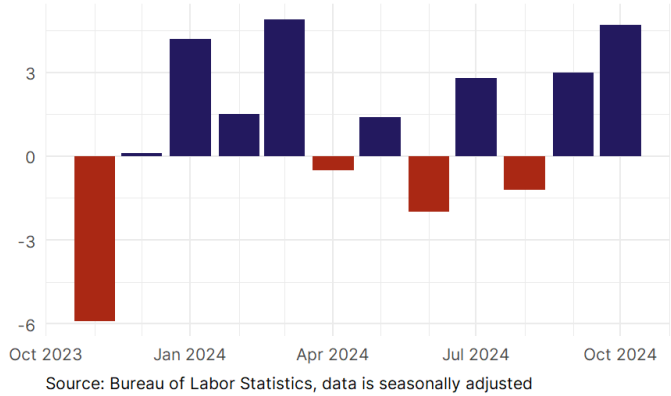
Source: Bureau of Labor Statistics, data is seasonally adjusted

## Mississippi Payroll Employment

Mississippi Nonfarm Payroll Jobs  
Monthly change, past five years (thousands)

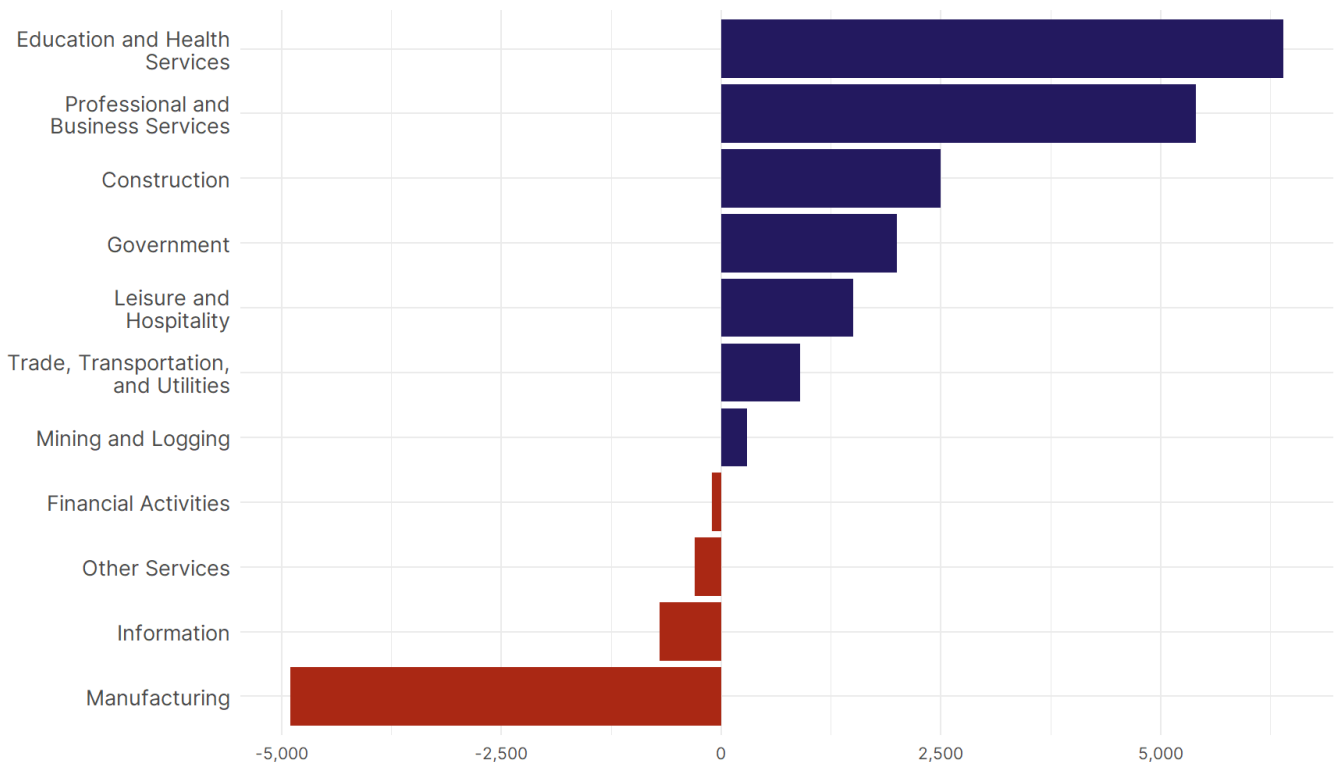


Mississippi Nonfarm Payroll Jobs  
Monthly change, past 12 months (thousands)



- **Mississippi added 4,700 net payroll jobs, or 0.4 percent,** on a seasonally adjusted basis during October. In the prior month, Mississippi added 3,000 jobs. Mississippi nonfarm payroll employment has increased in **8 of the past 12 months.**
- Nationally, nonfarm payrolls **rose by 12,000 in October, or 0 percent.** Mississippi is tied for 33rd in the nation for percentage gain in nonfarm payroll employment over the past 12 months.
- **Mississippi added 4,500 private sector jobs, or 0.5 percent,** on a seasonally adjusted basis during October. In the prior month, Mississippi added 2,900 jobs. Mississippi private sector payroll employment has increased in **7 of the past 12 months.**
- Nationally, private sector payroll jobs **fell by 28,000 jobs in October, or 0 percent.** Mississippi is tied for 27th in the nation for percentage gain in private sector payroll employment over the past 12 months.

Change in Mississippi  
Payroll Employment by Sector  
over past 12 months



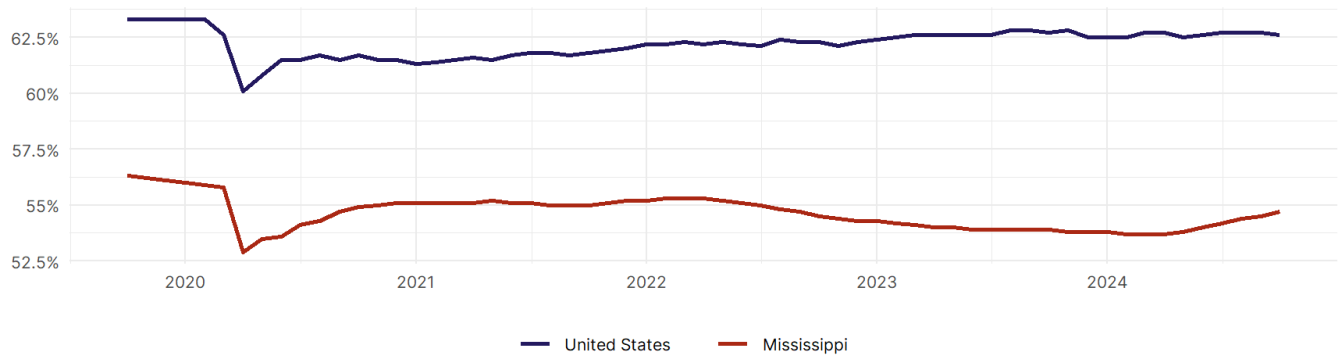
- The best performing sectors on a seasonally adjusted basis during October were **Professional and Business Services (2,400)** and **Construction (600)**.
- The poorest performing sectors during the month were **Information (0)** and **Other Services (-500)**.
- The best performing sectors during the last 12 months were **Education and Health Services (6,400)** and **Professional and Business Services (5,400)**.
- The poorest performing sectors during the last 12 months were **Information (-700)** and **Manufacturing (-4,900)**.

### Mississippi Labor Force

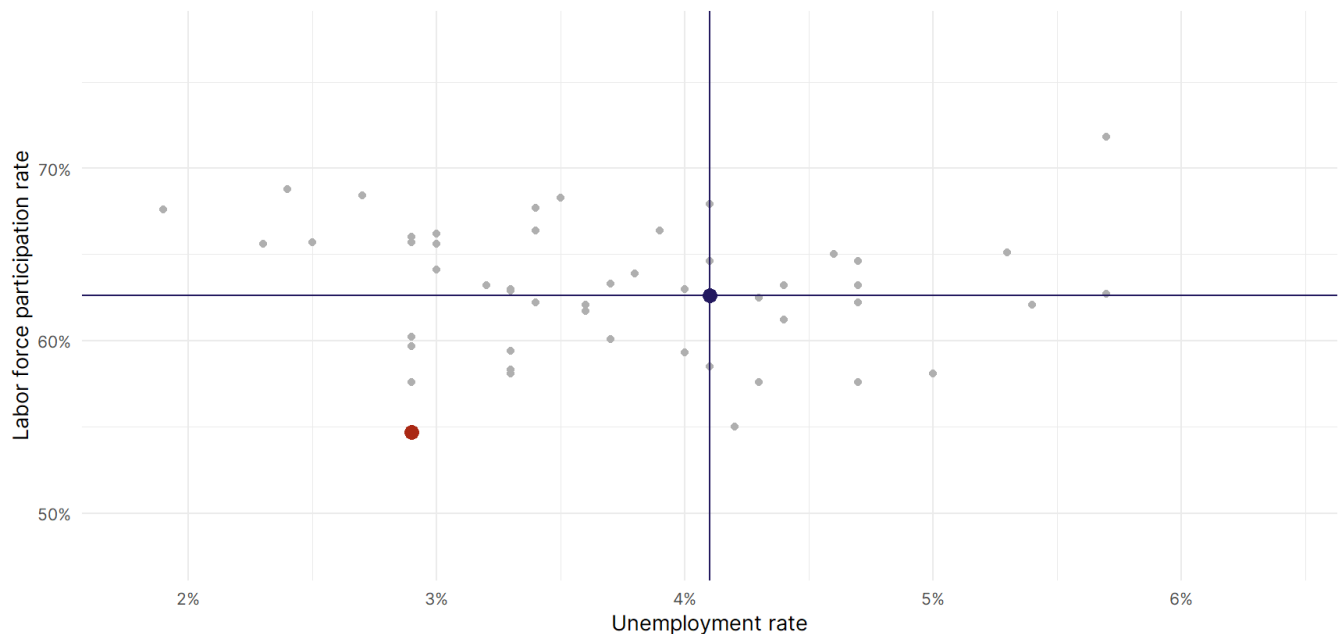
The labor force participation rate is the percentage of the civilian noninstitutionalized population age 16 and older who are employed or actively looking for work.

- The labor force participation rate in **Mississippi rose to 54.7 percent in October from 54.5 percent in the prior month.**
- **Mississippi ranks 51st** in the nation.
- The 10-year high for the labor force participation rate in Mississippi was **56.3 percent** occurring in October 2019, and the 10-year low was **52.9 percent** in April 2020.
- The national labor force participation rate **fell by 0.1 percentage points to 62.6 percent** in October.

Mississippi Labor Force Participation Rate



Source: Bureau of Labor Statistics, data is seasonally adjusted



Source: Bureau of Labor Statistics, data is seasonally adjusted