



United States Congress

Joint Economic Committee

Est. 1946

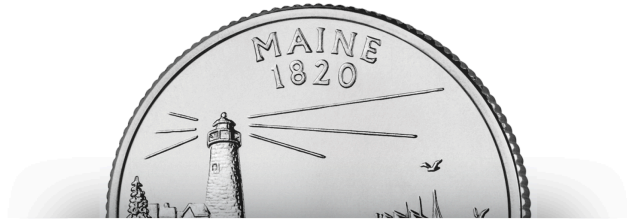
Republicans

Representative David Schweikert, *Vice Chairman*



Maine

Employment Update



September 2024 | Released October 22, 2024

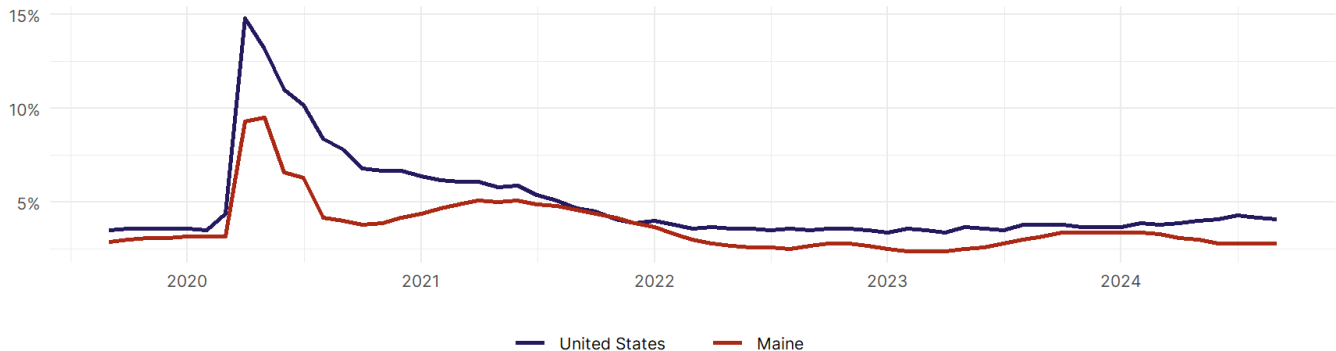
United States Employment Snapshot

- In September, among the 50 states and the District of Columbia **unemployment fell in 3, rose in 16, and remained unchanged in 32.**
- The highest unemployment rate was 5.7 percent in **District of Columbia**, and the lowest was 2 percent in **South Dakota**. Nationally, the unemployment rate fell by 0.1 percentage point to 4.1 percent.
- In September, **payroll jobs rose in 42 states and fell in 8.** The largest payroll job percent increase was 0.7 percent in **Idaho**. The largest payroll job percent decline was 0.3 percent in **Iowa**.

Maine Employment Snapshot

- In September, **Maine added 300 net payroll jobs** and the **unemployment rate remained unchanged at 2.8 percent.** In the prior month, Maine added 400 net payroll jobs.
- Over the past 12 months, **Maine added 5,600 net payroll jobs** and the **unemployment rate fell by 0.4 percentage points from 3.2 percent.**
- Nationally, nonfarm payrolls **rose by 254,000 in September, or 0.2 percent.** Maine is **tied for 36th** in the nation for percentage gain in nonfarm payroll employment over the past 12 months.
- In September, **Maine's private sector added 400 net private payroll jobs**, and over the past 12 months it added 2,600 private payroll jobs. In the prior month, Maine lost 400 net private payroll jobs.
- In September, employment in Maine **rose by 2,057**, and over the past 12 months it rose by 15,498.
- **Maine's labor force participation rate rose to 60.1 percent** in September from 59.9 percent and **ranks 39th** in the nation. In the past 12 months, the labor force participation rate has risen by 0.7 percentage points.

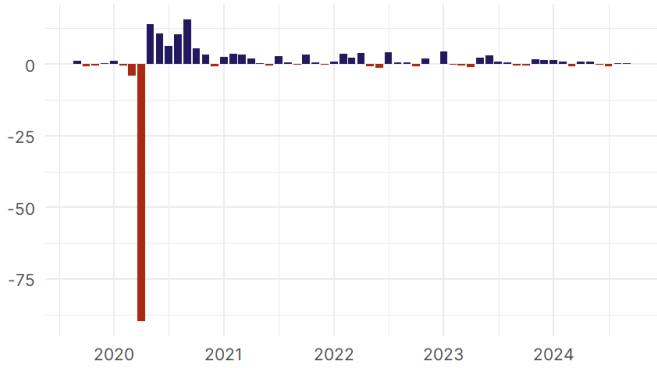
Maine Unemployment Rate



Source: Bureau of Labor Statistics, data is seasonally adjusted

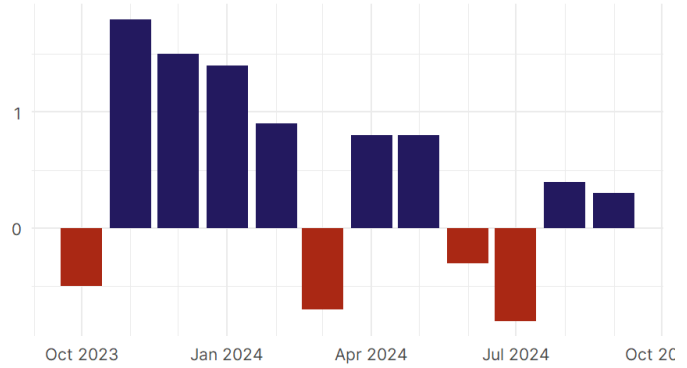
Maine Payroll Employment

Maine Nonfarm Payroll Jobs
Monthly change, past five years (thousands)



Source: Bureau of Labor Statistics, data is seasonally adjusted

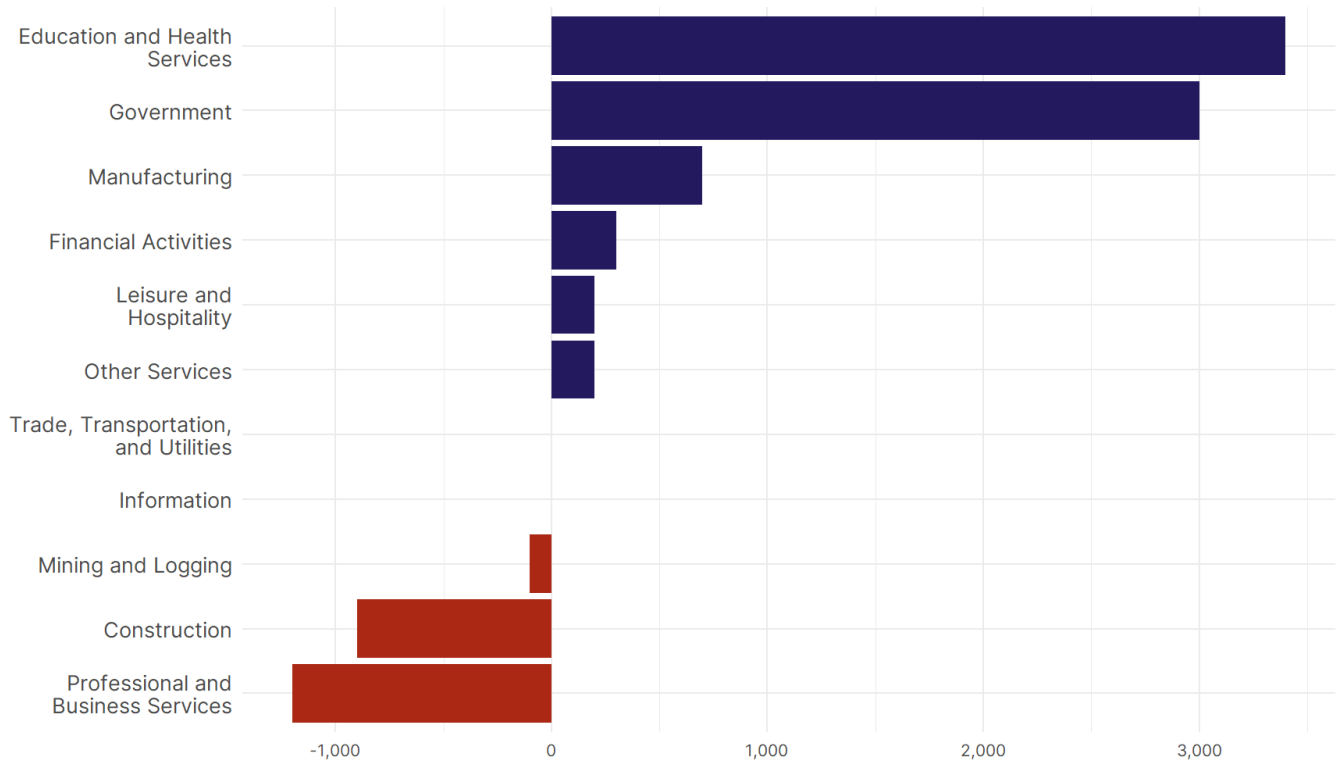
Maine Nonfarm Payroll Jobs
Monthly change, past 12 months (thousands)



Source: Bureau of Labor Statistics, data is seasonally adjusted

- **Maine added 300 net payroll jobs, or 0 percent**, on a seasonally adjusted basis during September. In the prior month, Maine added 400 jobs. Maine nonfarm payroll employment has increased in **8 of the past 12 months**.
- Nationally, nonfarm payrolls **rose by 254,000 in September, or 0.2 percent**. Maine is tied for 36th in the nation for percentage gain in nonfarm payroll employment over the past 12 months.
- **Maine added 400 private sector jobs, or 0.1 percent**, on a seasonally adjusted basis during September. In the prior month, Maine lost 400 jobs. Maine private sector payroll employment has increased in **7 of the past 12 months**.
- Nationally, private sector payroll jobs **rose by 223,000 jobs in September, or 0.2 percent**. Maine ranks 44th in the nation for percentage gain in private sector payroll employment over the past 12 months.

Change in Maine Payroll Employment by Sector over past 12 months



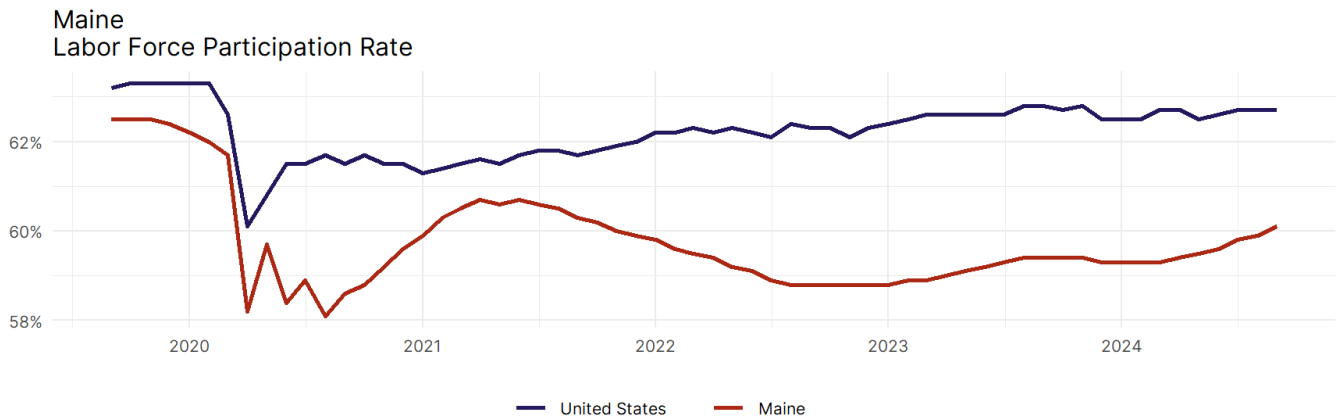
Source: Bureau of Labor Statistics, data is seasonally adjusted

- The best performing sectors on a seasonally adjusted basis during September were **Construction (600)** and **Financial Activities (200)**.
- The poorest performing sectors during the month were **Leisure and Hospitality (-300)** and **Education and Health Services (-600)**.
- The best performing sectors during the last 12 months were **Education and Health Services (3,400)** and **Government (3,000)**.
- The poorest performing sectors during the last 12 months were **Construction (-900)** and **Professional and Business Services (-1,200)**.

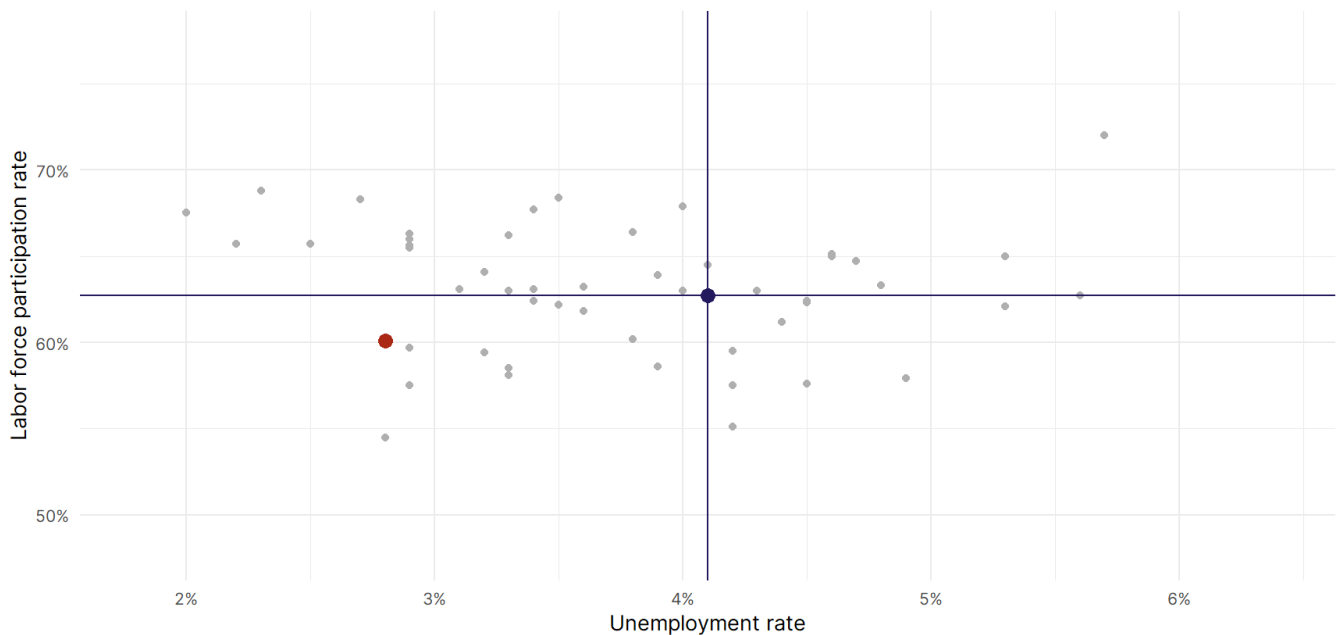
Maine Labor Force

The labor force participation rate is the percentage of the civilian noninstitutionalized population age 16 and older who are employed or actively looking for work.

- The labor force participation rate in **Maine rose to 60.1 percent in September from 59.9 percent in the prior month.**
- **Maine ranks 39th** in the nation.
- The 10-year high for the labor force participation rate in Maine was **63.9 percent** in September 2014, and the 10-year low was **58.1 percent** in August 2020.
- The national labor force participation rate **remained steady at 62.7 percent** in September.



Source: Bureau of Labor Statistics, data is seasonally adjusted



Source: Bureau of Labor Statistics, data is seasonally adjusted