



United States Congress

Joint Economic Committee

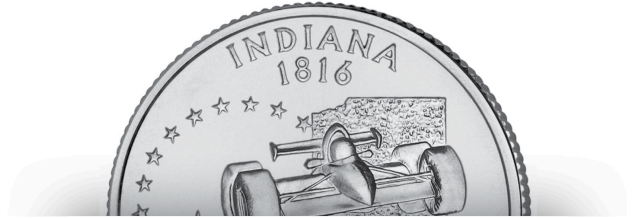
Est. 1946

Republicans

Representative David Schweikert, *Vice Chairman*



Indiana Employment Update



October 2024 | Released November 19, 2024

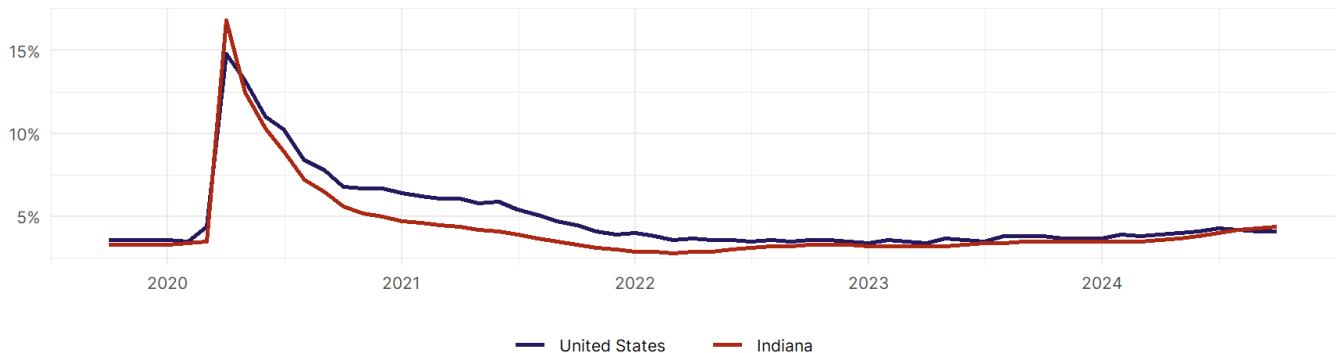
United States Employment Snapshot

- In October, among the 50 states and the District of Columbia **unemployment fell in 8, rose in 22, and remained unchanged in 21.**
- The highest unemployment rate was 5.7 percent in **District of Columbia and Nevada**, and the lowest was 1.9 percent in **South Dakota**. Nationally, the unemployment rate remained unchanged in October.
- In October, **payroll jobs rose in 21 states and fell in 30.** The largest payroll job percent increase was 0.4 percent in **Idaho**. The largest payroll job percent decline was 1 percent in **Washington**.

Indiana Employment Snapshot

- In October, **Indiana added 2,900 net payroll jobs** and the **unemployment rate rose by 0.1 percentage point to 4.4 percent.** In the prior month, Indiana lost 100 net payroll jobs.
- Over the past 12 months, **Indiana added 52,700 net payroll jobs** and the **unemployment rate rose by 0.9 percentage points from 3.5 percent.**
- Nationally, nonfarm payrolls **rose by 12,000 in October, or 0 percent.** Indiana **is tied for 14th** in the nation for percentage gain in nonfarm payroll employment over the past 12 months.
- In October, **Indiana's private sector added 100 net private payroll jobs**, and over the past 12 months it added 44,300 private payroll jobs. In the prior month, Indiana added 1,400 net private payroll jobs.
- In October, employment in Indiana **rose by 12,484**, and over the past 12 months it fell by 8,390.
- **Indiana's labor force participation rate rose to 63.2 percent** in October from 63 percent and **is tied for 24th** in the nation. In the past 12 months, the labor force participation rate has fallen by 0.1 percentage points.

Indiana
Unemployment Rate

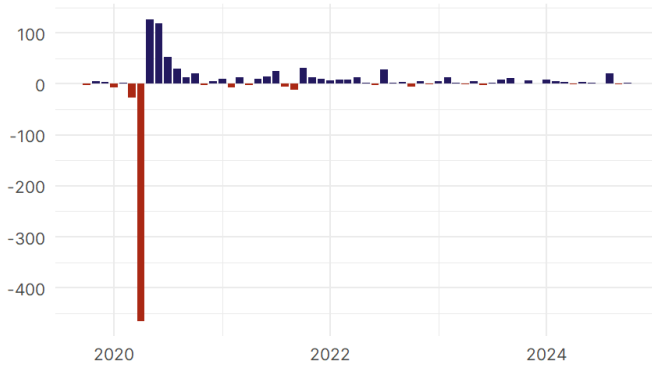


Source: Bureau of Labor Statistics, data is seasonally adjusted

Indiana Payroll Employment

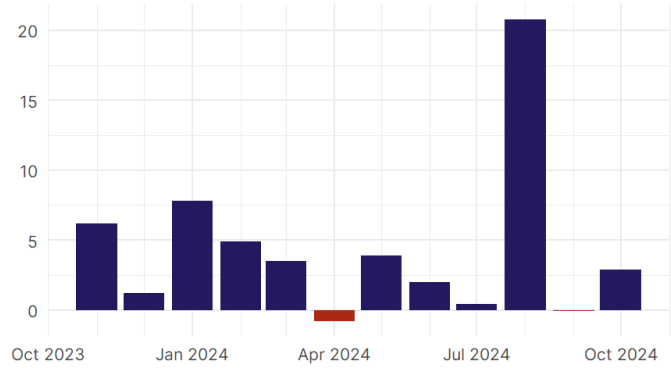
Indiana Nonfarm Payroll Jobs

Monthly change, past five years (thousands)



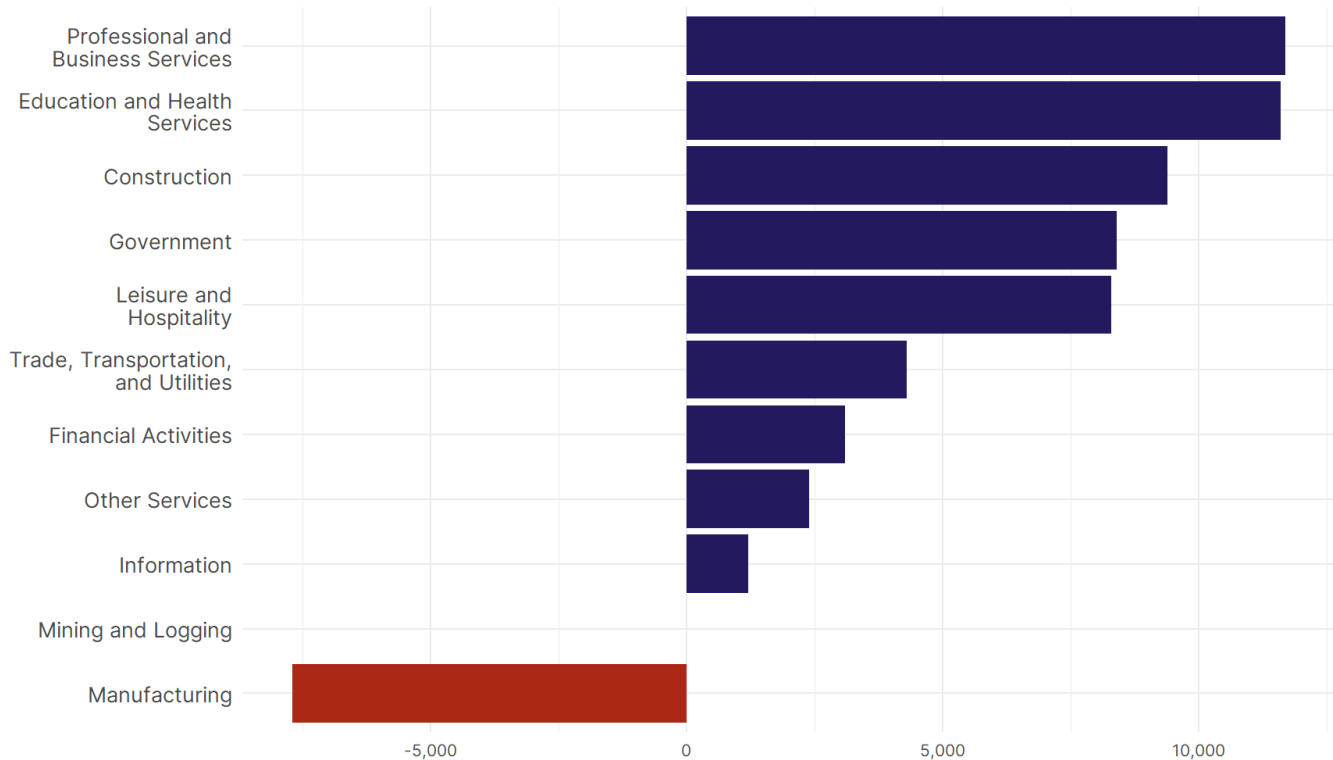
Indiana Nonfarm Payroll Jobs

Monthly change, past 12 months (thousands)



- **Indiana added 2,900 net payroll jobs, or 0.1 percent,** on a seasonally adjusted basis during October. In the prior month, Indiana lost 100 jobs. Indiana nonfarm payroll employment has increased in **10 of the past 12 months.**
- Nationally, nonfarm payrolls **rose by 12,000 in October, or 0 percent.** Indiana is tied for 14th in the nation for percentage gain in nonfarm payroll employment over the past 12 months.
- **Indiana added 100 private sector jobs, or 0 percent,** on a seasonally adjusted basis during October. In the prior month, Indiana added 1,400 jobs. Indiana private sector payroll employment has increased in **11 of the past 12 months.**
- Nationally, private sector payroll jobs **fell by 28,000 jobs in October, or 0 percent.** Indiana is tied for 14th in the nation for percentage gain in private sector payroll employment over the past 12 months.

Change in Indiana Payroll Employment by Sector over past 12 months



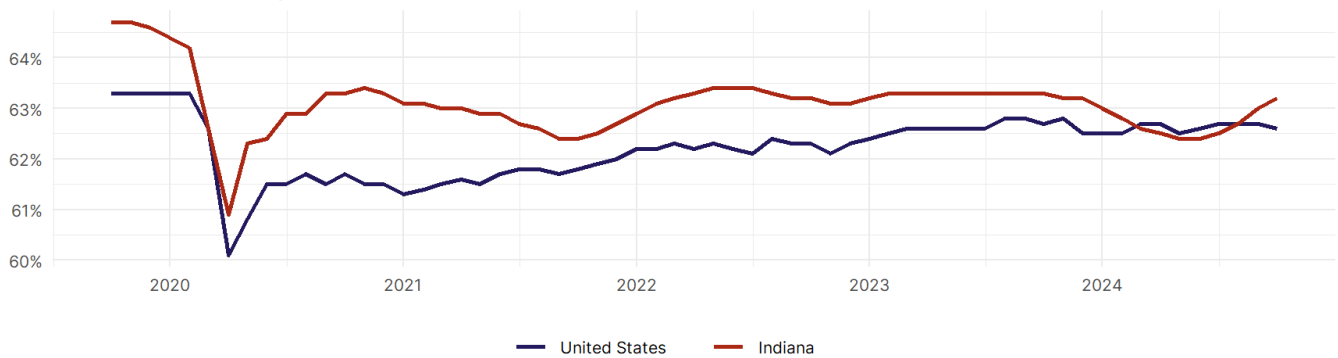
- The best performing sectors on a seasonally adjusted basis during October were **Government (2,800)** and **Leisure and Hospitality (2,700)**.
- The poorest performing sectors during the month were **Professional and Business Services (-1,100)** and **Manufacturing (-1,400)**.
- The best performing sectors during the last 12 months were **Professional and Business Services (11,700)** and **Education and Health Services (11,600)**.
- The poorest performing sectors during the last 12 months were **Mining and Logging (0)** and **Manufacturing (-7,700)**.

Indiana Labor Force

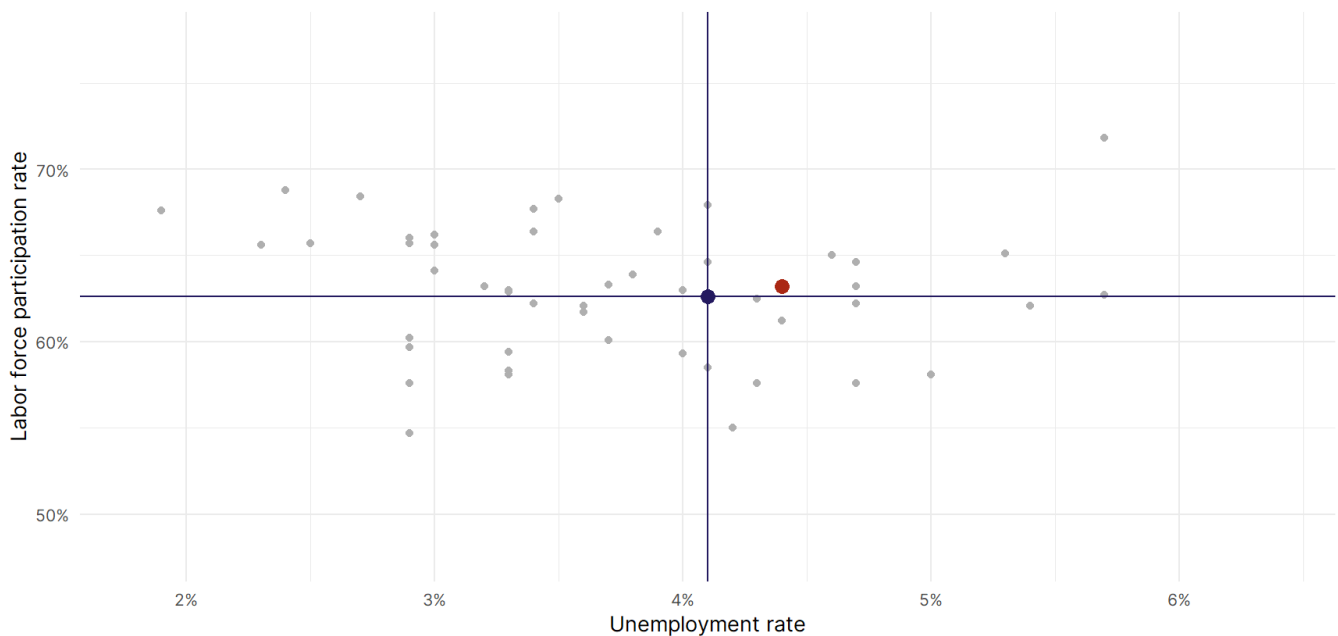
The labor force participation rate is the percentage of the civilian noninstitutionalized population age 16 and older who are employed or actively looking for work.

- The labor force participation rate in **Indiana rose to 63.2 percent in October from 63 percent in the prior month.**
- **Indiana is tied for 24th** in the nation.
- The 10-year high for the labor force participation rate in Indiana was **65.2 percent** occurring in July 2018, and the 10-year low was **60.9 percent** in April 2020.
- The national labor force participation rate **fell by 0.1 percentage points to 62.6 percent** in October.

Indiana
Labor Force Participation Rate



Source: Bureau of Labor Statistics, data is seasonally adjusted



Source: Bureau of Labor Statistics, data is seasonally adjusted