



United States Congress

Joint Economic Committee

Est. 1946

Republicans

Representative David Schweikert, *Vice Chairman*



Hawaii

Employment Update



October 2024 | Released November 19, 2024

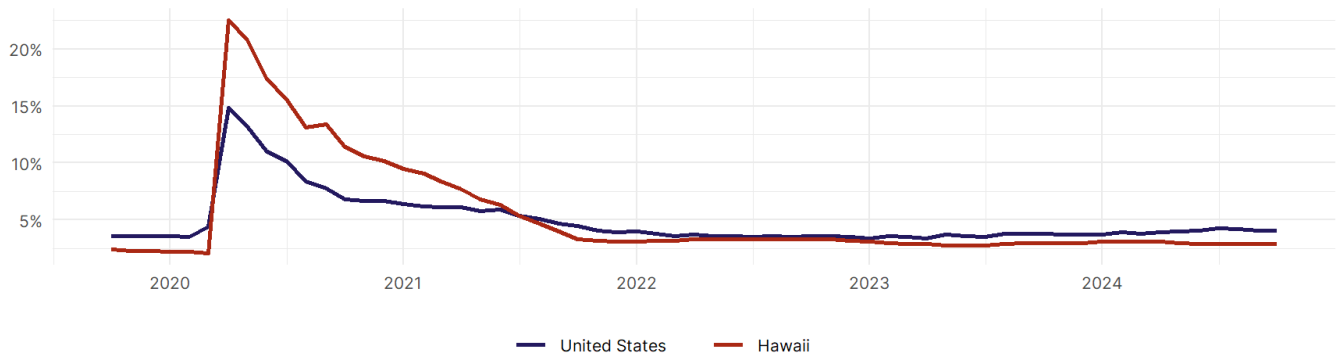
United States Employment Snapshot

- In October, among the 50 states and the District of Columbia **unemployment fell in 8, rose in 22, and remained unchanged in 21.**
- The highest unemployment rate was 5.7 percent in **District of Columbia and Nevada**, and the lowest was 1.9 percent in **South Dakota**. Nationally, the unemployment rate remained unchanged in October.
- In October, **payroll jobs rose in 21 states and fell in 30.** The largest payroll job percent increase was 0.4 percent in **Idaho**. The largest payroll job percent decline was 1 percent in **Washington**.

Hawaii Employment Snapshot

- In October, **Hawaii lost 200 net payroll jobs** and the **unemployment rate remained unchanged at 2.9 percent.** In the prior month, Hawaii added 700 net payroll jobs.
- Over the past 12 months, **Hawaii added 9,400 net payroll jobs** and the **unemployment rate fell by 0.1 percentage point from 3 percent.**
- Nationally, nonfarm payrolls **rose by 12,000 in October, or 0 percent.** Hawaii **is tied for 20th** in the nation for percentage gain in nonfarm payroll employment over the past 12 months.
- In October, **Hawaii's private sector lost 1,400 net private payroll jobs**, and over the past 12 months it added 7,600 private payroll jobs. In the prior month, Hawaii lost 100 net private payroll jobs.
- In October, employment in Hawaii **rose by 765**, and over the past 12 months it fell by 3,248.
- **Hawaii's labor force participation rate rose to 59.7 percent** in October from 59.6 percent and **ranks 40th** in the nation. In the past 12 months, the labor force participation rate has fallen by 0.4 percentage points.

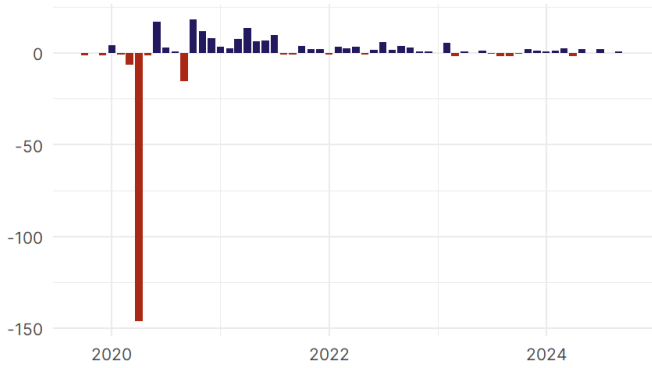
Hawaii
Unemployment Rate



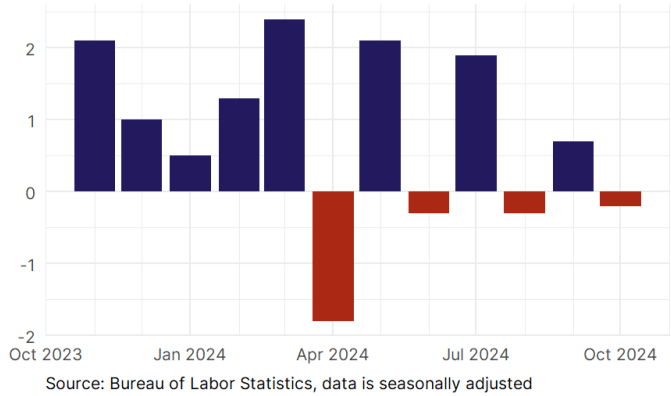
Source: Bureau of Labor Statistics, data is seasonally adjusted

Hawaii Payroll Employment

Hawaii Nonfarm Payroll Jobs
Monthly change, past five years (thousands)

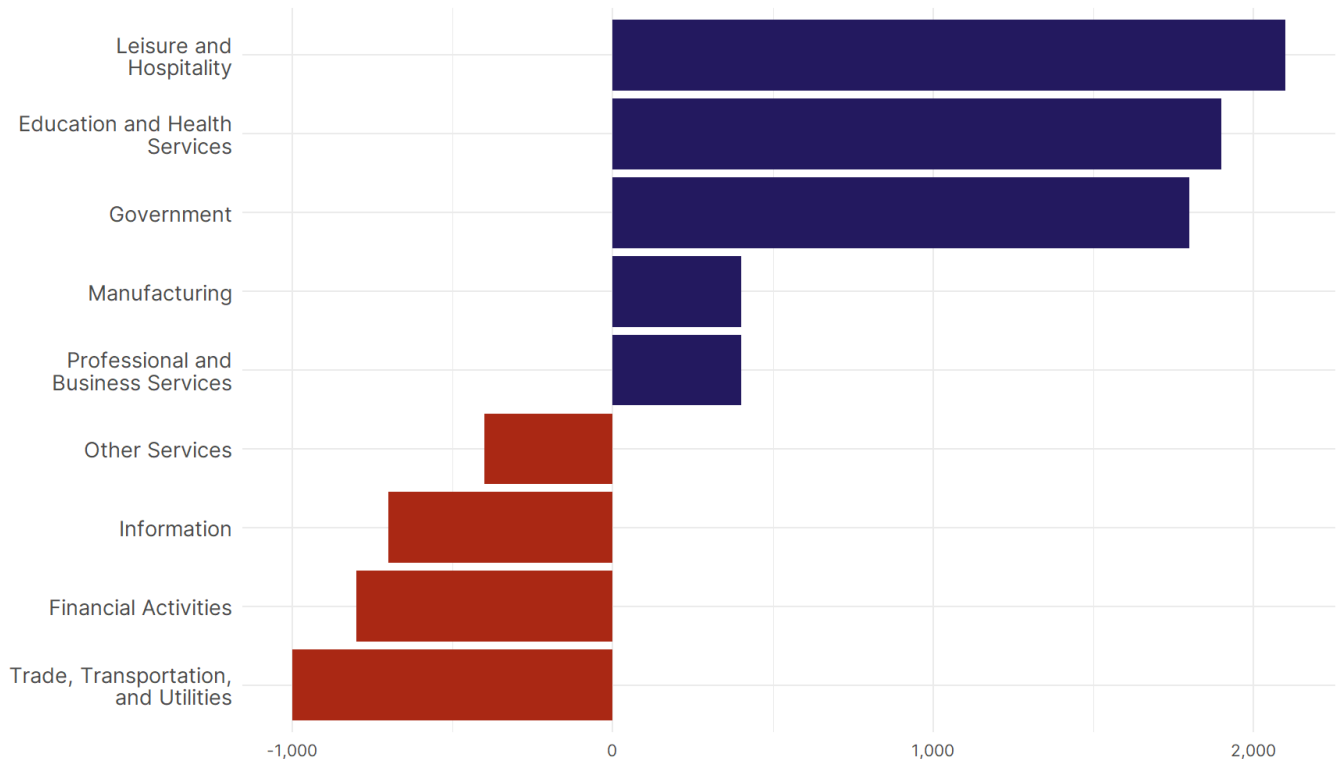


Hawaii Nonfarm Payroll Jobs
Monthly change, past 12 months (thousands)



- **Hawaii lost 200 net payroll jobs, or 0 percent**, on a seasonally adjusted basis during October. In the prior month, Hawaii added 700 jobs. Hawaii nonfarm payroll employment has increased in **8 of the past 12 months**.
- Nationally, nonfarm payrolls **rose by 12,000 in October, or 0 percent**. Hawaii is tied for 20th in the nation for percentage gain in nonfarm payroll employment over the past 12 months.
- **Hawaii lost 1,400 private sector jobs, or -0.3 percent**, on a seasonally adjusted basis during October. In the prior month, Hawaii lost 100 jobs. Hawaii private sector payroll employment has increased in **8 of the past 12 months**.
- Nationally, private sector payroll jobs **fell by 28,000 jobs in October, or 0 percent**. Hawaii is tied for 19th in the nation for percentage gain in private sector payroll employment over the past 12 months.

Change in Hawaii
Payroll Employment by Sector
over past 12 months

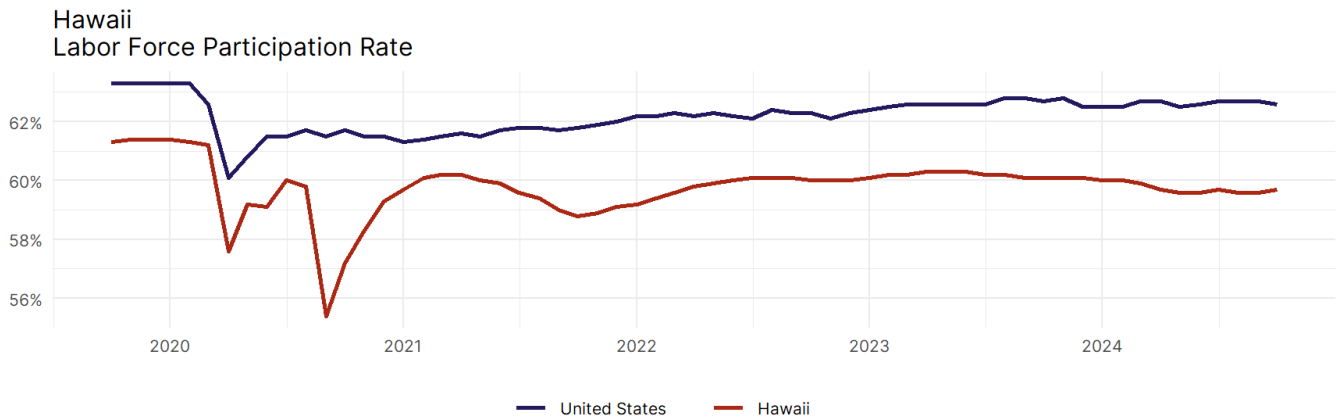


- The best performing sectors on a seasonally adjusted basis during October were **Government (1,200)** and **Manufacturing (100)**.
- The poorest performing sectors during the month were **Leisure and Hospitality (-500)** and **Education and Health Services (-1,300)**.
- The best performing sectors during the last 12 months were **Leisure and Hospitality (2,100)** and **Education and Health Services (1,900)**.
- The poorest performing sectors during the last 12 months were **Financial Activities (-800)** and **Trade, Transportation, and Utilities (-1,000)**.

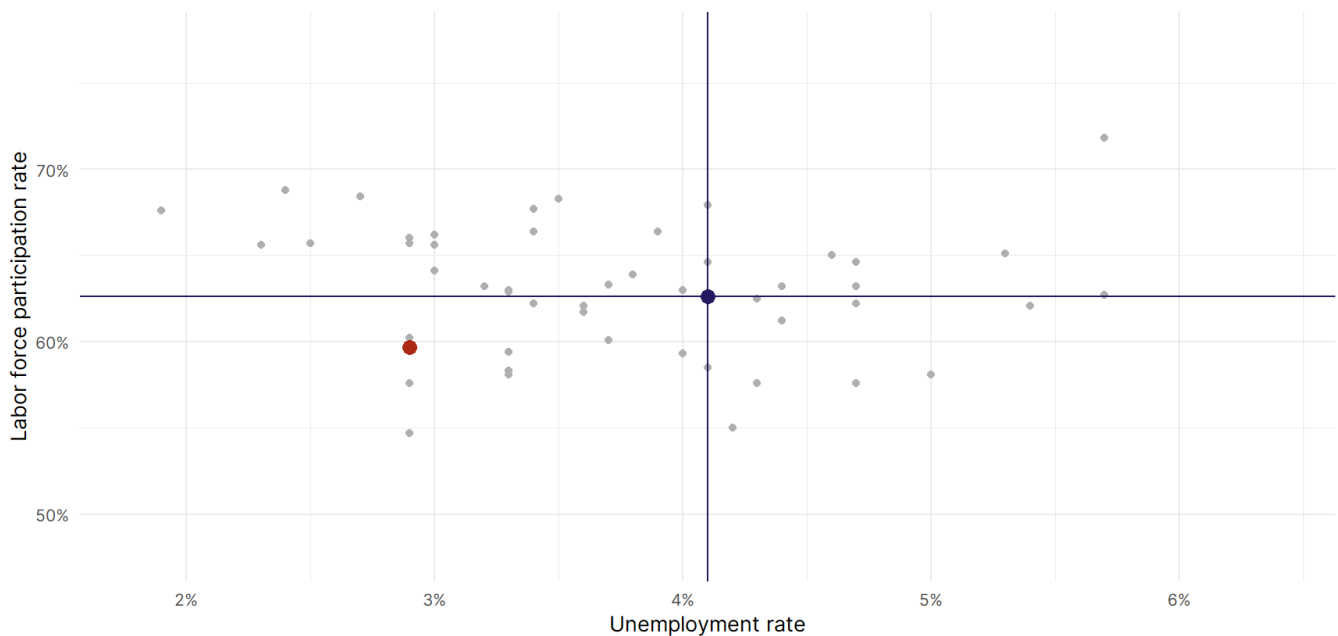
Hawaii Labor Force

The labor force participation rate is the percentage of the civilian noninstitutionalized population age 16 and older who are employed or actively looking for work.

- The labor force participation rate in **Hawaii rose to 59.7 percent in October from 59.6 percent in the prior month**.
- **Hawaii ranks 40th** in the nation.
- The 10-year high for the labor force participation rate in Hawaii was **62.4 percent** occurring in May 2017, and the 10-year low was **55.4 percent** in September 2020.
- The national labor force participation rate **fell by 0.1 percentage points to 62.6 percent** in October.



Source: Bureau of Labor Statistics, data is seasonally adjusted



Source: Bureau of Labor Statistics, data is seasonally adjusted