



United States Congress

# Joint Economic Committee

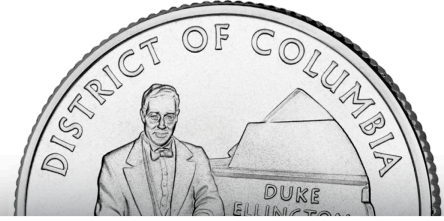
Est. 1946

Republicans

Representative David Schweikert, *Vice Chairman*



## District of Columbia Employment Update



October 2024 | Released November 19, 2024

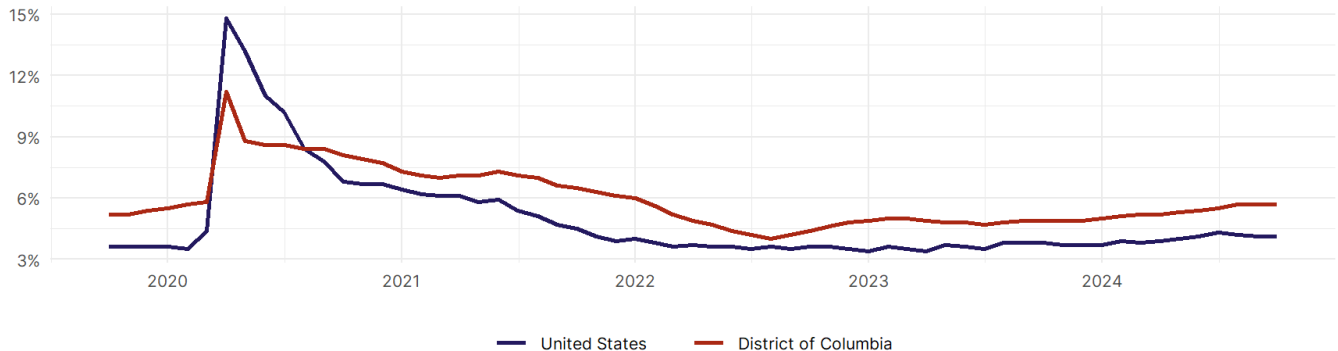
### United States Employment Snapshot

- In October, among the 50 states and the District of Columbia **unemployment fell in 8, rose in 22, and remained unchanged in 21.**
- The highest unemployment rate was 5.7 percent in **District of Columbia and Nevada**, and the lowest was 1.9 percent in **South Dakota**. Nationally, the unemployment rate remained unchanged in October.
- In October, **payroll jobs rose in 21 states and fell in 30.** The largest payroll job percent increase was 0.4 percent in **Idaho**. The largest payroll job percent decline was 1 percent in **Washington**.

### District of Columbia Employment Snapshot

- In October, **District of Columbia lost 300 net payroll jobs** and the **unemployment rate remained unchanged at 5.7 percent.** In the prior month, District of Columbia added 2,500 net payroll jobs.
- Over the past 12 months, **District of Columbia added 7,200 net payroll jobs** and the **unemployment rate rose by 0.8 percentage points from 4.9 percent.**
- Nationally, nonfarm payrolls **rose by 12,000 in October, or 0 percent.** District of Columbia **is tied for 37th** in the nation for percentage gain in nonfarm payroll employment over the past 12 months.
- In October, **District of Columbia's private sector lost 500 net private payroll jobs**, and over the past 12 months it added 8,200 private payroll jobs. In the prior month, District of Columbia added 4,600 net private payroll jobs.
- In October, employment in District of Columbia **fell by 375**, and over the past 12 months it rose by 581.
- **District of Columbia's labor force participation rate fell to 71.8 percent** in October from 72 percent and **ranks 1st** in the nation. In the past 12 months, the labor force participation rate has fallen by 0.3 percentage points.

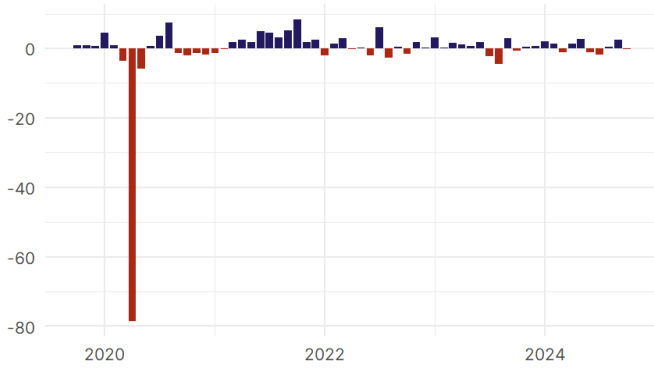
District of Columbia  
Unemployment Rate



Source: Bureau of Labor Statistics, data is seasonally adjusted

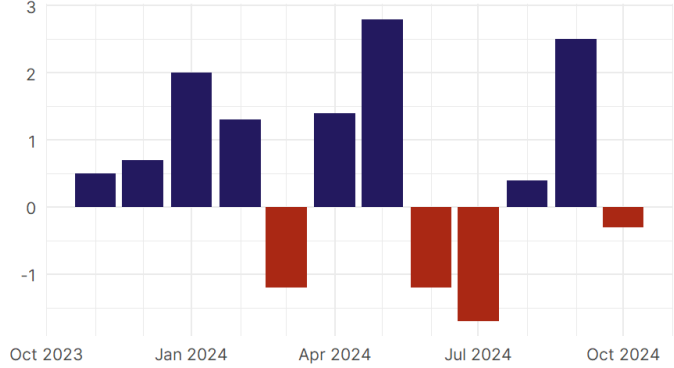
## District of Columbia Payroll Employment

District of Columbia Nonfarm Payroll Jobs  
Monthly change, past five years (thousands)



Source: Bureau of Labor Statistics, data is seasonally adjusted

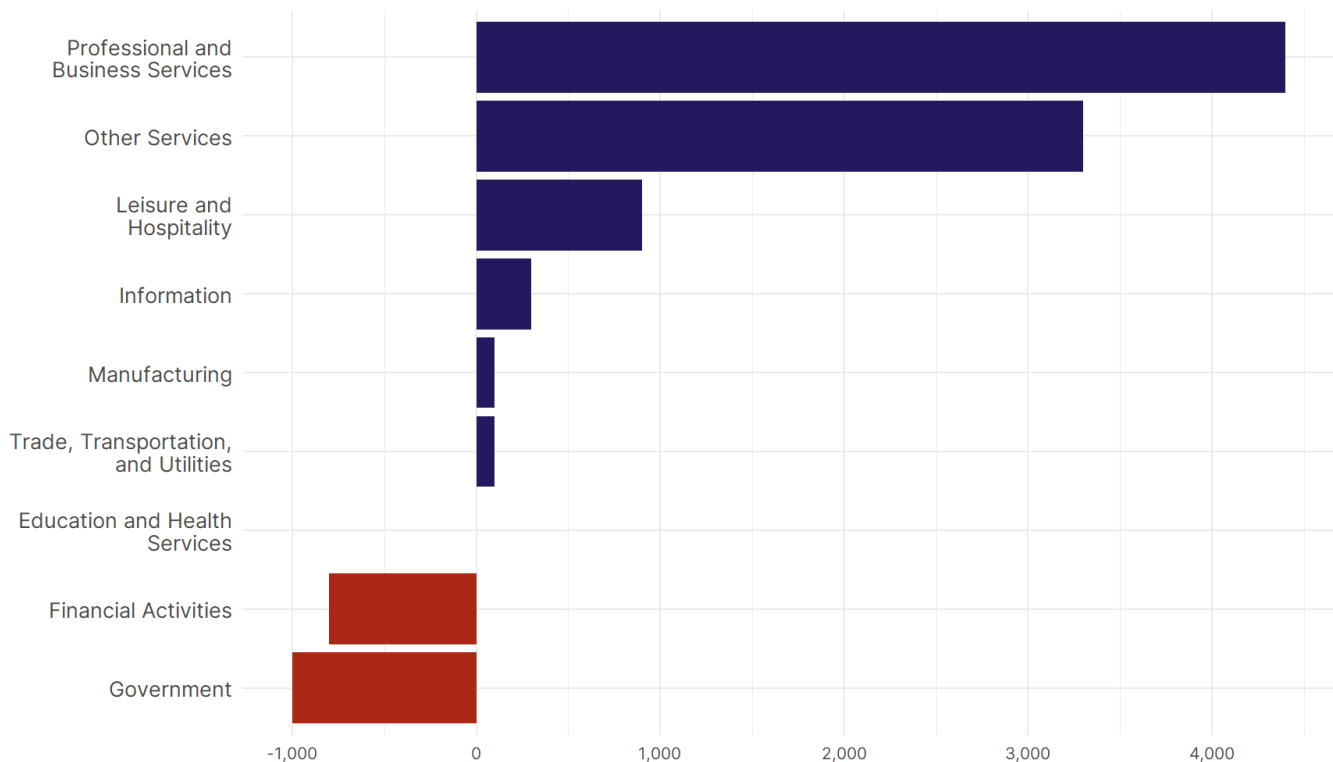
District of Columbia Nonfarm Payroll Jobs  
Monthly change, past 12 months (thousands)



Source: Bureau of Labor Statistics, data is seasonally adjusted

- **District of Columbia lost 300 net payroll jobs, or 0 percent,** on a seasonally adjusted basis during October. In the prior month, District of Columbia added 2,500 jobs. District of Columbia nonfarm payroll employment has increased in **8 of the past 12 months.**
- Nationally, nonfarm payrolls **rose by 12,000 in October, or 0 percent.** District of Columbia is tied for 37th in the nation for percentage gain in nonfarm payroll employment over the past 12 months.
- **District of Columbia lost 500 private sector jobs, or -0.1 percent,** on a seasonally adjusted basis during October. In the prior month, District of Columbia added 4,600 jobs. District of Columbia private sector payroll employment has increased in **8 of the past 12 months.**
- Nationally, private sector payroll jobs **fell by 28,000 jobs in October, or 0 percent.** District of Columbia is tied for 19th in the nation for percentage gain in private sector payroll employment over the past 12 months.

Change in District of Columbia  
Payroll Employment by Sector  
over past 12 months



Source: Bureau of Labor Statistics, data is seasonally adjusted

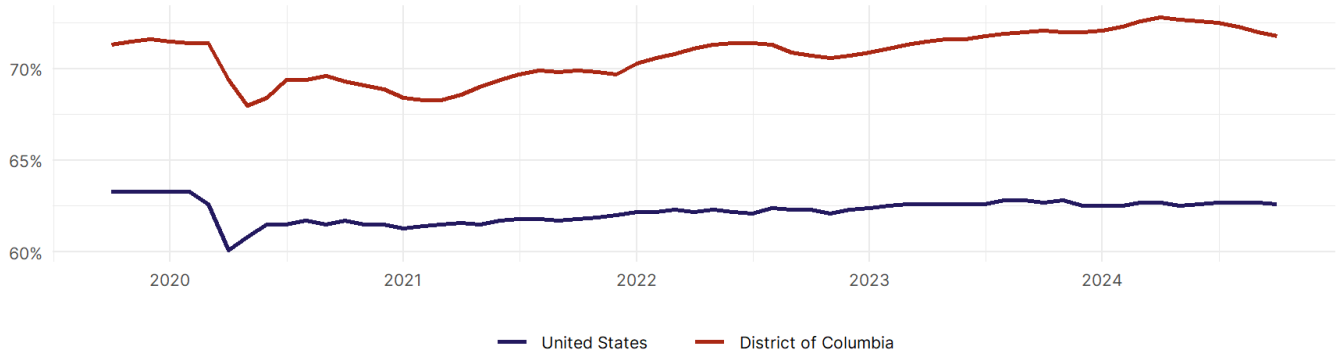
- The best performing sectors on a seasonally adjusted basis during October were **Professional and Business Services (900)** and **Other Services (400)**.
- The poorest performing sectors during the month were **Education and Health Services (-700)** and **Leisure and Hospitality (-1,300)**.
- The best performing sectors during the last 12 months were **Professional and Business Services (4,400)** and **Other Services (3,300)**.
- The poorest performing sectors during the last 12 months were **Financial Activities (-800)** and **Government (-1,000)**.

### District of Columbia Labor Force

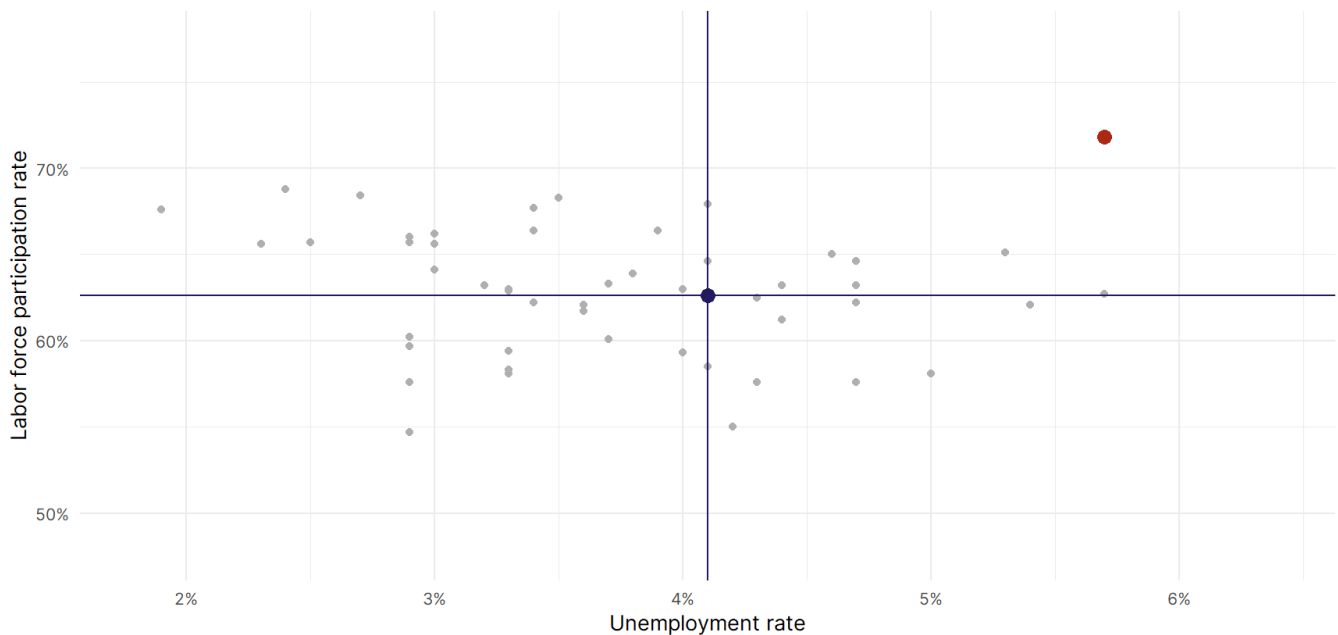
The labor force participation rate is the percentage of the civilian noninstitutionalized population age 16 and older who are employed or actively looking for work.

- The labor force participation rate in **District of Columbia fell to 71.8 percent in October from 72 percent in the prior month.**
- **District of Columbia ranks 1st** in the nation.
- The 10-year high for the labor force participation rate in District of Columbia was **72.8 percent** in April 2024, and the 10-year low was **68 percent** in May 2020.
- The national labor force participation rate **fell by 0.1 percentage points to 62.6 percent** in October.

District of Columbia  
Labor Force Participation Rate



Source: Bureau of Labor Statistics, data is seasonally adjusted



Source: Bureau of Labor Statistics, data is seasonally adjusted