

## Arizona Employment Situation Summary

### National Employment Data

- Since President Biden took office, 5,875,000 jobs have been created nationwide, an average of 588,000 created each month.
- In the month of November, the latest for which national data are available, 210,000 jobs were created, and the unemployment rate dropped to 4.2%, outperforming expectations and reaching a new pandemic-era low.
- The unemployment rate went down for adult men (4.0%), adult women (4.0%), white workers (3.7%), Asian workers (3.8%), Hispanic workers (5.2%) and Black workers (6.7%).

### State Employment Data

- Since President Biden took office, 120,400 jobs have been created in Arizona.
- In the month of November, the latest for which state-level data are available, 8,600 jobs were created in Arizona.

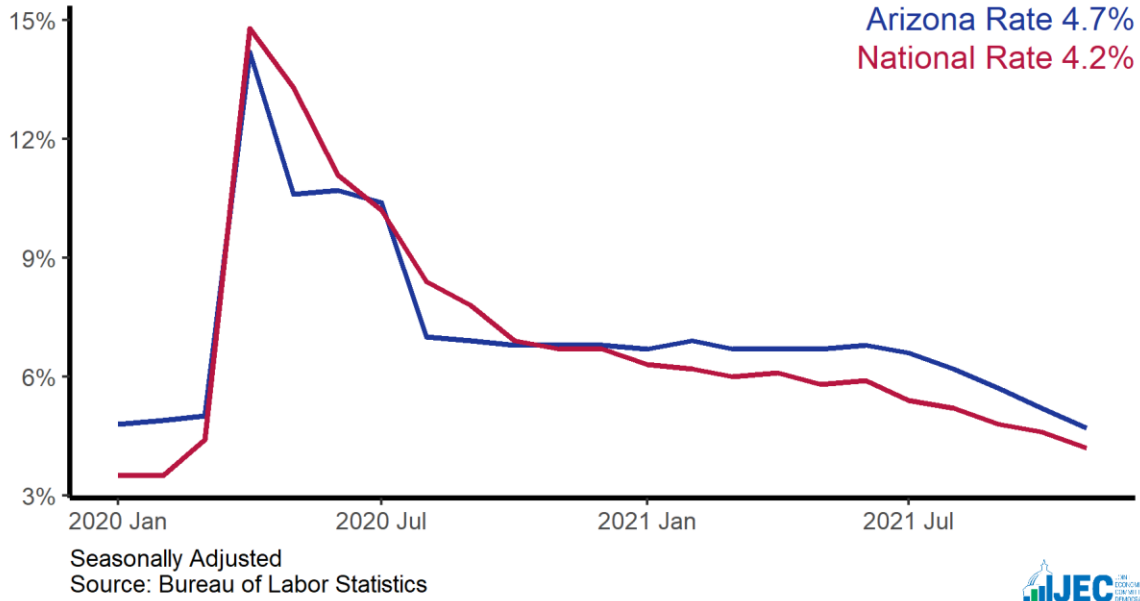
Sector	Change in Total Jobs in November	Jobs Recovered	Change in Total Jobs Since January
<b>Total Nonfarm, Arizona</b>	<b>8,600</b>	<b>101%</b>	<b>120,400</b>
Education and Health Services, Arizona	2,100	110%	16,800
Government, Arizona	800	25%	-900
Construction, Arizona	700	76%	1,000
Manufacturing, Arizona	100	113%	3,800
Professional and Business Services, Arizona	0	109%	22,100
Leisure and Hospitality, Arizona	-200	87%	38,800
Retail Trade, Arizona	-700	120%	8,200

Source: Bureau of Labor Statistics

Note: Positive change reflects net job creation. "Recovered" refers to the share of jobs recovered since the pandemic low point as a share of jobs lost during the pandemic. Jobs lost during the pandemic are measured as the difference between the number of jobs in the industry in February 2020 and the number at the "low point" of the pandemic--the month with the fewest people employed in a given industry. The month of the low point varies by industry.

# Arizona Unemployment Rate

State and national unemployment rates, since January 2020



# Arizona Jobs Recovery

Total employment since January 2020, in thousands

