

Arkansas Employment Situation Summary

National Employment Data

- Since President Biden took office, 5,875,000 jobs have been created nationwide, an average of 588,000 created each month.
- In the month of November, the latest for which national data are available, 210,000 jobs were created, and the unemployment rate dropped to 4.2%, outperforming expectations and reaching a new pandemic-era low.
- The unemployment rate went down for adult men (4.0%), adult women (4.0%), white workers (3.7%), Asian workers (3.8%), Hispanic workers (5.2%) and Black workers (6.7%).

State Employment Data

- Since President Biden took office, 21,700 jobs have been created in Arkansas.
- In the month of November, the latest for which state-level data are available, 3,300 jobs were created in Arkansas.

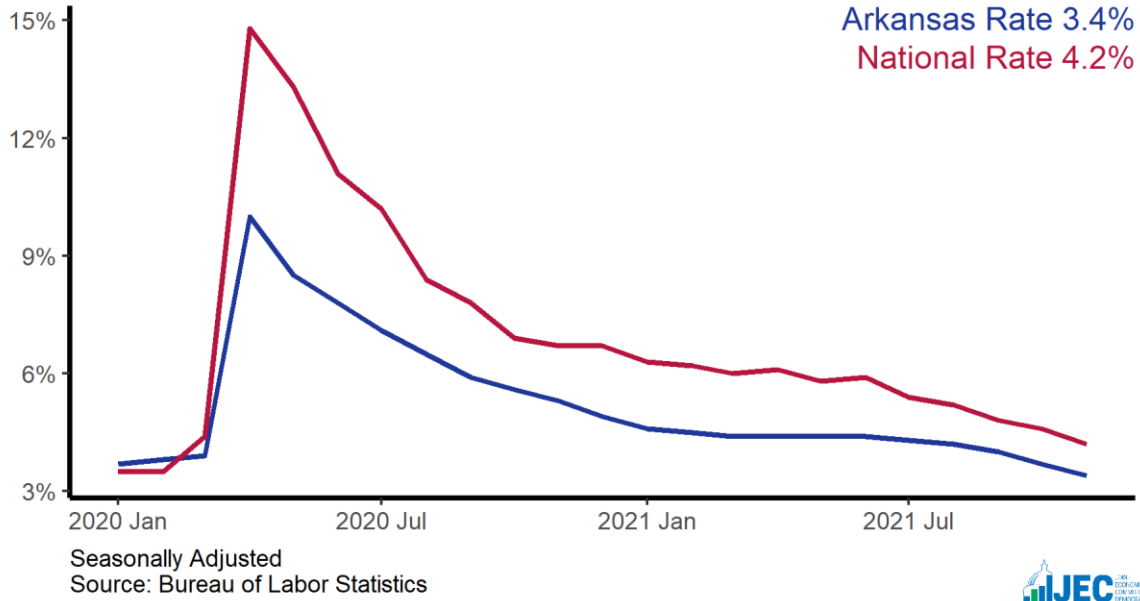
Sector	Change in Total Jobs in November	Jobs Recovered	Change in Total Jobs Since January
Total Nonfarm, Arkansas	3,300	91%	21,700
Professional and Business Services, Arkansas	1,500	132%	6,900
Education and Health Services, Arkansas	900	70%	2,300
Leisure and Hospitality, Arkansas	100	83%	3,400
Government, Arkansas	100	4%	-2,200
Manufacturing, Arkansas	-100	109%	4,400
Construction, Arkansas	-300	0%	-4,000
Retail Trade, Arkansas	-300	113%	-1,300

Source: Bureau of Labor Statistics

Note: Positive change reflects net job creation. "Recovered" refers to the share of jobs recovered since the pandemic low point as a share of jobs lost during the pandemic. Jobs lost during the pandemic are measured as the difference between the number of jobs in the industry in February 2020 and the number at the "low point" of the pandemic--the month with the fewest people employed in a given industry. The month of the low point varies by industry.

Arkansas Unemployment Rate

State and national unemployment rates, since January 2020



Arkansas Jobs Recovery

Total employment since January 2020, in thousands

