

## Wisconsin Employment Situation Summary

### National Employment Data

- Since President Biden took office, 5,875,000 jobs have been created nationwide, an average of 588,000 created each month.
- In the month of November, the latest for which national data are available, 210,000 jobs were created, and the unemployment rate dropped to 4.2%, outperforming expectations and reaching a new pandemic-era low.
- The unemployment rate went down for adult men (4.0%), adult women (4.0%), white workers (3.7%), Asian workers (3.8%), Hispanic workers (5.2%) and Black workers (6.7%).

### State Employment Data

- Since President Biden took office, 55,700 jobs have been created in Wisconsin.
- In the month of November, the latest for which state-level data are available, 10,200 jobs were created in Wisconsin.

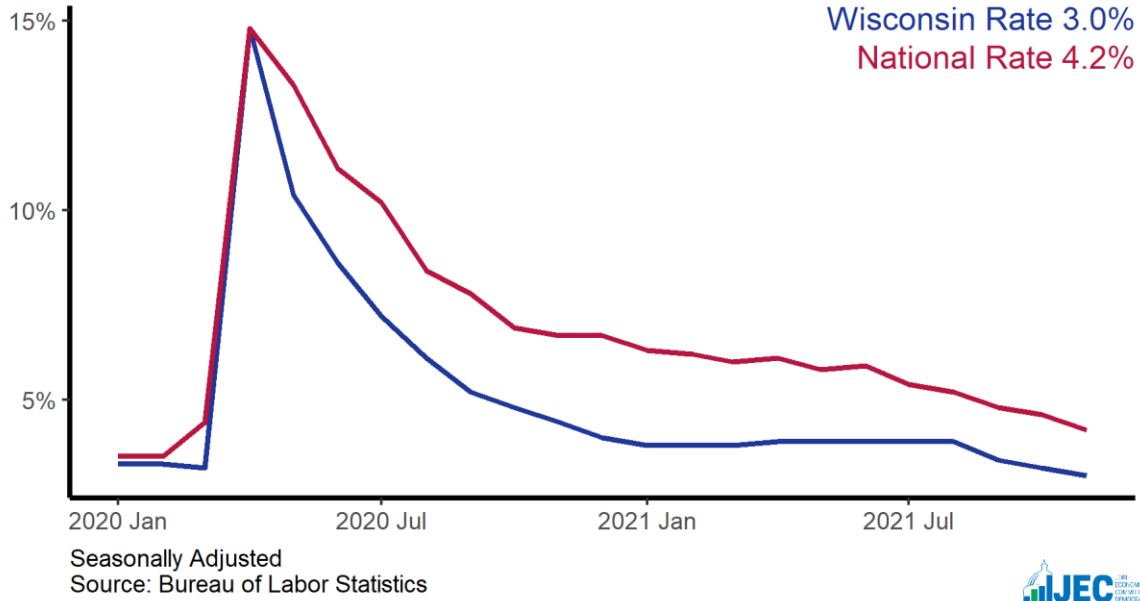
Sector	Change in Total Jobs in November	Jobs Recovered	Change in Total Jobs Since January
<b>Total Nonfarm, Wisconsin</b>	<b>10,200</b>	<b>74%</b>	<b>55,700</b>
Leisure and Hospitality, Wisconsin	6,700	81%	34,700
Manufacturing, Wisconsin	2,700	106%	13,900
Construction, Wisconsin	2,600	97%	3,600
Professional and Business Services, Wisconsin	400	86%	1,100
Education and Health Services, Wisconsin	-400	39%	-4,700
Retail Trade, Wisconsin	-1,600	76%	-7,100
Government, Wisconsin	-2,100	39%	300

Source: Bureau of Labor Statistics

Note: Positive change reflects net job creation. "Recovered" refers to the share of jobs recovered since the pandemic low point as a share of jobs lost during the pandemic. Jobs lost during the pandemic are measured as the difference between the number of jobs in the industry in February 2020 and the number at the "low point" of the pandemic--the month with the fewest people employed in a given industry. The month of the low point varies by industry.

# Wisconsin Unemployment Rate

State and national unemployment rates, since January 2020



# Wisconsin Jobs Recovery

Total employment since January 2020, in thousands

