

Missouri Employment Situation Summary

National Employment Data

- Since President Biden took office, 4,817,000 jobs have been created nationwide, an average of 602,000 created each month.
- In the month of September, the latest for which national data are available, 194,000 jobs were created, and the unemployment rate dropped to 4.8%, outperforming expectations and reaching a new pandemic-era low.
- The unemployment rate went down for adult men (4.7%), adult women (4.2%), white workers (4.2%) and Black workers (7.9%). The unemployment rate among Asian workers (4.2%) and Hispanic workers (6.3%) remained stable.

State Employment Data

- Since President Biden took office, 38,300 jobs have been created in Missouri.
- In the month of September, the latest for which state-level data are available, 7,500 jobs were created in Missouri.

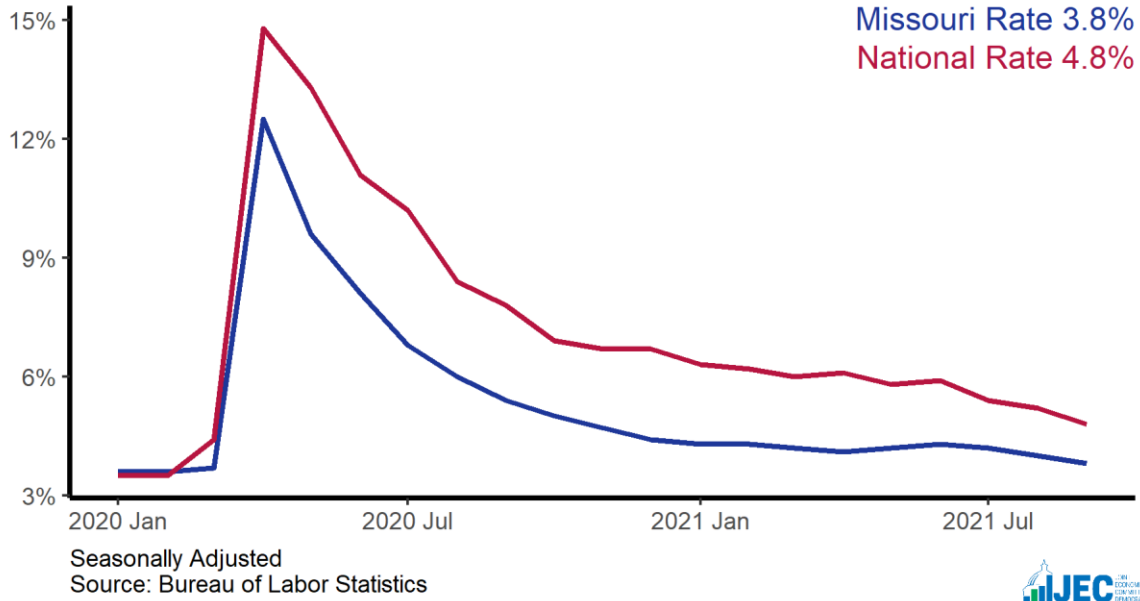
Sector	Change in Total Jobs in September	Jobs Recovered	Change in Total Jobs Since January
Total Nonfarm, Missouri	7,500	77%	38,300
Retail Trade, Missouri	4,500	98%	-200
Professional and Business Services, Missouri	4,500	98%	10,200
Leisure and Hospitality, Missouri	3,100	81%	27,100
Education and Health Services, Missouri	1,500	70%	2,900
Government, Missouri	-1,100	56%	1,800
Construction, Missouri	-1,600	72%	1,200
Manufacturing, Missouri	-1,900	83%	1,900

Source: Bureau of Labor Statistics

Note: Positive change reflects net job creation. "Recovered" refers to the share of jobs recovered since the pandemic low point as a share of jobs lost during the pandemic. Jobs lost during the pandemic are measured as the difference between the number of jobs in the industry in February 2020 and the number at the "low point" of the pandemic--the month with the fewest people employed in a given industry. The month of the low point varies by industry.

Missouri Unemployment Rate

State and national unemployment rates, since January 2020



Missouri Jobs Recovery

Total employment since January 2020, in thousands

