

## Idaho Employment Situation Summary

### National Employment Data

- Since President Biden took office, 5,583,000 jobs have been created nationwide, an average of 620,000 created each month.
- In the month of October, the latest for which national data are available, 531,000 jobs were created and the unemployment rate dropped to 4.6%, reaching a new pandemic-era low.
- The unemployment rate went down for adult men (4.3%). The unemployment rates among adult women (4.4%), white workers (4.0%), Asian workers (4.2%), Hispanic workers (5.9%) and Black workers (7.9%) remained stable.

### State Employment Data

- Since President Biden took office, 5,600 jobs have been created in Idaho.
- In the month of October, the latest for which state-level data are available, 1,300 jobs were lost in Idaho.

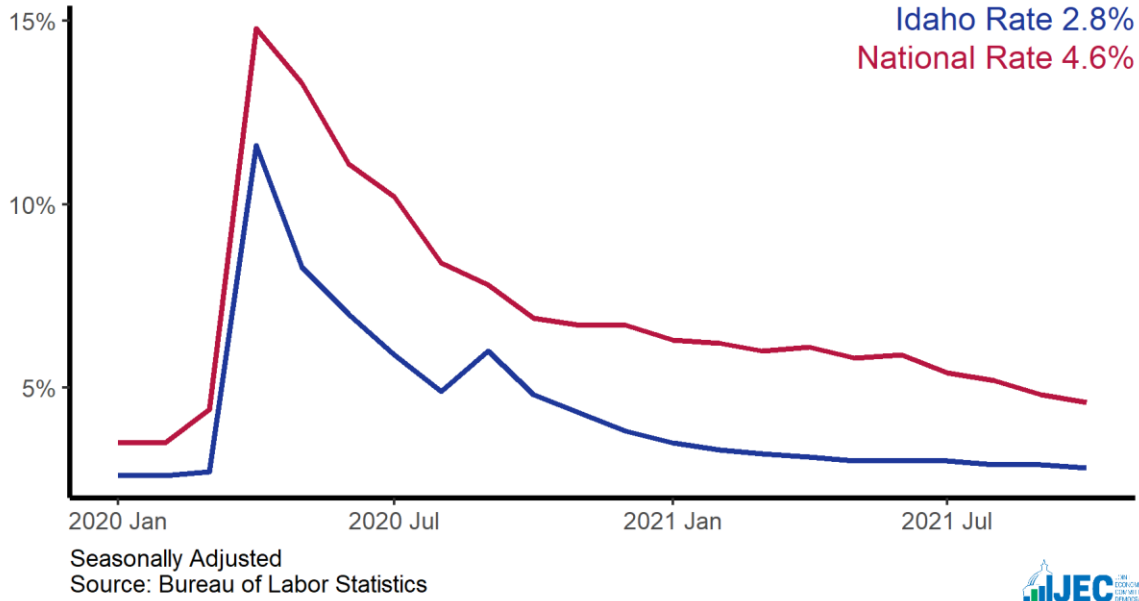
Sector	Change in Total Jobs in October	Jobs Recovered	Change in Total Jobs Since January
<b>Total Nonfarm, Idaho</b>	<b>-1,300</b>	<b>115%</b>	<b>5,600</b>
Manufacturing, Idaho	700	66%	-1,500
Education and Health Services, Idaho	300	86%	200
Construction, Idaho	300	358%	400
Government, Idaho	100	102%	1,700
Retail Trade, Idaho	-200	140%	-800
Professional and Business Services, Idaho	-400	96%	-1,400
Leisure and Hospitality, Idaho	-1,700	106%	4,500

Source: Bureau of Labor Statistics

Note: Positive change reflects net job creation. "Recovered" refers to the share of jobs recovered since the pandemic low point as a share of jobs lost during the pandemic. Jobs lost during the pandemic are measured as the difference between the number of jobs in the industry in February 2020 and the number at the "low point" of the pandemic--the month with the fewest people employed in a given industry. The month of the low point varies by industry.

# Idaho Unemployment Rate

State and national unemployment rates, since January 2020



# Idaho Jobs Recovery

Total employment since January 2020, in thousands

