

Idaho Employment Situation Summary

National Employment Data

- Since President Biden took office, 4,817,000 jobs have been created nationwide, an average of 602,000 created each month.
- In the month of September, the latest for which national data are available, 194,000 jobs were created, and the unemployment rate dropped to 4.8%, outperforming expectations and reaching a new pandemic-era low.
- The unemployment rate went down for adult men (4.7%), adult women (4.2%), white workers (4.2%) and Black workers (7.9%). The unemployment rate among Asian workers (4.2%) and Hispanic workers (6.3%) remained stable.

State Employment Data

- Since President Biden took office, 5,100 jobs have been created in Idaho.
- In the month of September, the latest for which state-level data are available, 4,400 jobs were lost in Idaho.

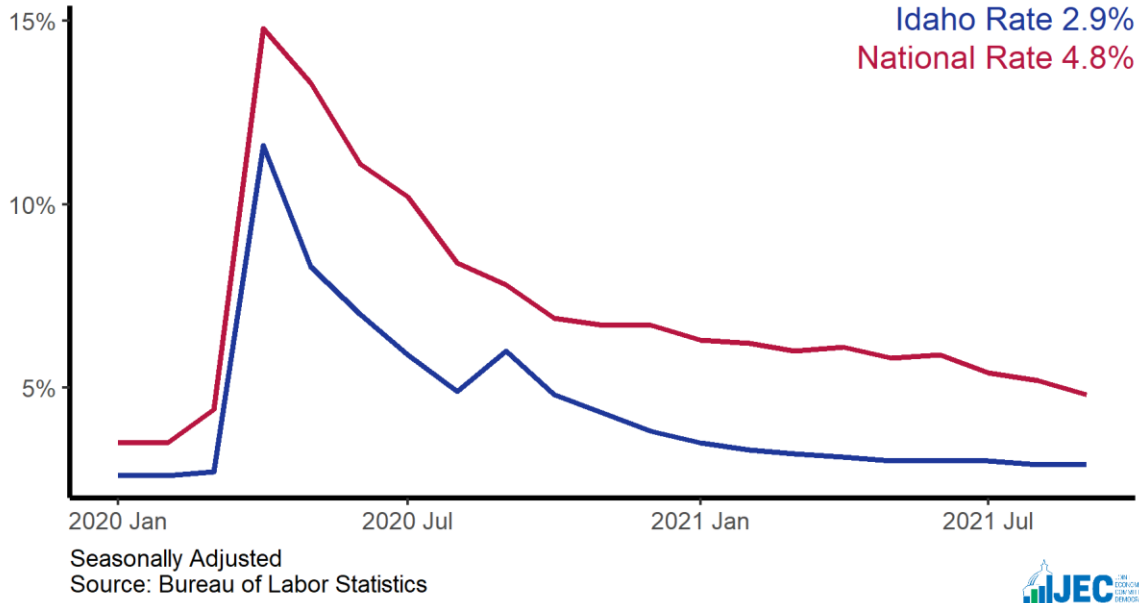
Sector	Change in Total Jobs in September	Jobs Recovered	Change in Total Jobs Since January
Total Nonfarm, Idaho	-4,400	115%	5,100
Leisure and Hospitality, Idaho	1,200	108%	5,400
Construction, Idaho	1,100	368%	600
Professional and Business Services, Idaho	100	106%	-900
Manufacturing, Idaho	-300	43%	-2,300
Retail Trade, Idaho	-400	142%	-600
Education and Health Services, Idaho	-2,200	78%	-600
Government, Idaho	-2,700	92%	800

Source: Bureau of Labor Statistics

Note: Positive change reflects net job creation. "Recovered" refers to the share of jobs recovered since the pandemic low point as a share of jobs lost during the pandemic. Jobs lost during the pandemic are measured as the difference between the number of jobs in the industry in February 2020 and the number at the "low point" of the pandemic--the month with the fewest people employed in a given industry. The month of the low point varies by industry.

Idaho Unemployment Rate

State and national unemployment rates, since January 2020



Idaho Jobs Recovery

Total employment since January 2020, in thousands

