

Missouri Employment Situation Summary

National Employment Data

- Since President Biden took office, 5,583,000 jobs have been created nationwide, an average of 620,000 created each month.
- In the month of October, the latest for which national data are available, 531,000 jobs were created and the unemployment rate dropped to 4.6%, reaching a new pandemic-era low.
- The unemployment rate went down for adult men (4.3%). The unemployment rates among adult women (4.4%), white workers (4.0%), Asian workers (4.2%), Hispanic workers (5.9%) and Black workers (7.9%) remained stable.

State Employment Data

- Since President Biden took office, 43,800 jobs have been created in Missouri.
- In the month of October, the latest for which state-level data are available, 3,500 jobs were created in Missouri.

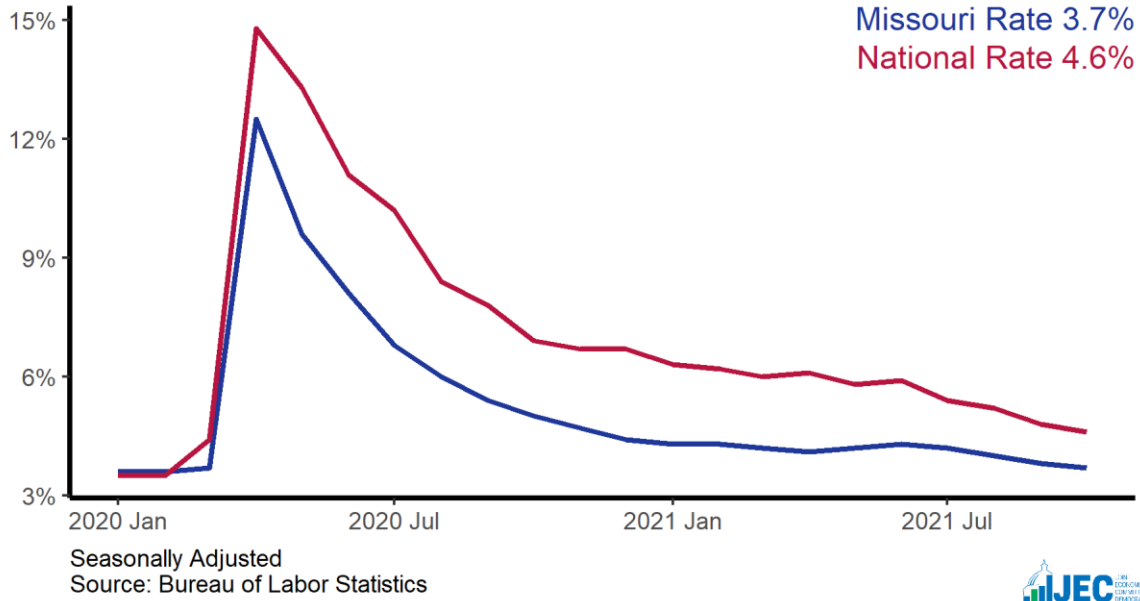
Sector	Change in Total Jobs in October	Jobs Recovered	Change in Total Jobs Since January
Total Nonfarm, Missouri	3,500	79%	43,800
Manufacturing, Missouri	3,200	98%	5,600
Professional and Business Services, Missouri	2,800	105%	12,700
Retail Trade, Missouri	900	102%	1,700
Education and Health Services, Missouri	100	70%	2,700
Government, Missouri	0	56%	1,700
Construction, Missouri	-1,500	55%	-400
Leisure and Hospitality, Missouri	-2,700	79%	24,700

Source: Bureau of Labor Statistics

Note: Positive change reflects net job creation. "Recovered" refers to the share of jobs recovered since the pandemic low point as a share of jobs lost during the pandemic. Jobs lost during the pandemic are measured as the difference between the number of jobs in the industry in February 2020 and the number at the "low point" of the pandemic--the month with the fewest people employed in a given industry. The month of the low point varies by industry.

Missouri Unemployment Rate

State and national unemployment rates, since January 2020



Missouri Jobs Recovery

Total employment since January 2020, in thousands

