

Idaho Employment Situation Summary

National Employment Data

- Since President Biden took office, 5,875,000 jobs have been created nationwide, an average of 588,000 created each month.
- In the month of November, the latest for which national data are available, 210,000 jobs were created, and the unemployment rate dropped to 4.2%, outperforming expectations and reaching a new pandemic-era low.
- The unemployment rate went down for adult men (4.0%), adult women (4.0%), white workers (3.7%), Asian workers (3.8%), Hispanic workers (5.2%) and Black workers (6.7%).

State Employment Data

- Since President Biden took office, 7,800 jobs have been created in Idaho.
- In the month of November, the latest for which state-level data are available, 800 jobs were created in Idaho.

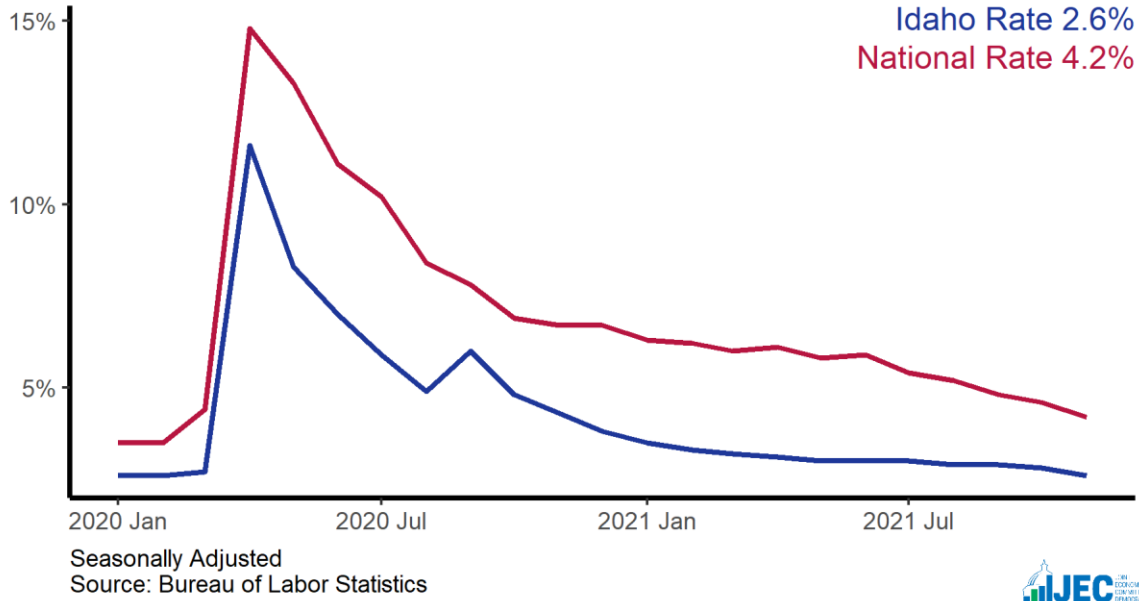
Sector	Change in Total Jobs in November	Jobs Recovered	Change in Total Jobs Since January
Total Nonfarm, Idaho	800	118%	7,800
Leisure and Hospitality, Idaho	800	108%	5,400
Education and Health Services, Idaho	400	91%	700
Retail Trade, Idaho	300	150%	200
Construction, Idaho	-200	353%	300
Professional and Business Services, Idaho	-300	82%	-2,100
Government, Idaho	-300	101%	1,600
Manufacturing, Idaho	-400	54%	-1,900

Source: Bureau of Labor Statistics

Note: Positive change reflects net job creation. "Recovered" refers to the share of jobs recovered since the pandemic low point as a share of jobs lost during the pandemic. Jobs lost during the pandemic are measured as the difference between the number of jobs in the industry in February 2020 and the number at the "low point" of the pandemic--the month with the fewest people employed in a given industry. The month of the low point varies by industry.

Idaho Unemployment Rate

State and national unemployment rates, since January 2020



Idaho Jobs Recovery

Total employment since January 2020, in thousands

