

Delaware Employment Situation Summary

National Employment Data

- Since President Biden took office, 5,583,000 jobs have been created nationwide, an average of 620,000 created each month.
- In the month of October, the latest for which national data are available, 531,000 jobs were created and the unemployment rate dropped to 4.6%, reaching a new pandemic-era low.
- The unemployment rate went down for adult men (4.3%). The unemployment rates among adult women (4.4%), white workers (4.0%), Asian workers (4.2%), Hispanic workers (5.9%) and Black workers (7.9%) remained stable.

State Employment Data

- Since President Biden took office, 9,000 jobs have been created in Delaware.
- In the month of October, the latest for which state-level data are available, 2,400 jobs were created in Delaware.

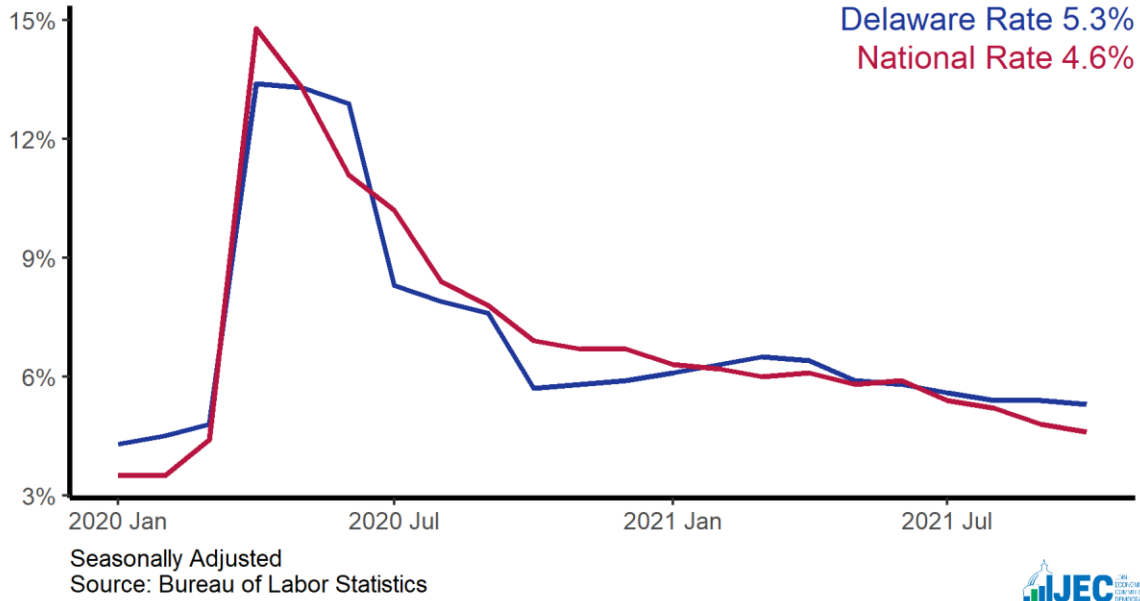
Sector	Change in Total Jobs in October	Jobs Recovered	Change in Total Jobs Since January
Total Nonfarm, Delaware	2,400	77%	9,000
Education and Health Services, Delaware	500	64%	1,400
Retail Trade, Delaware	400	101%	2,300
Professional and Business Services, Delaware	300	15%	-1,100
Leisure and Hospitality, Delaware	-100	79%	3,000
Manufacturing, Delaware	-100	13%	-600
Construction, Delaware	-200	142%	1,900
Government, Delaware	-200	64%	500

Source: Bureau of Labor Statistics

Note: Positive change reflects net job creation. "Recovered" refers to the share of jobs recovered since the pandemic low point as a share of jobs lost during the pandemic. Jobs lost during the pandemic are measured as the difference between the number of jobs in the industry in February 2020 and the number at the "low point" of the pandemic--the month with the fewest people employed in a given industry. The month of the low point varies by industry.

Delaware Unemployment Rate

State and national unemployment rates, since January 2020



Delaware Jobs Recovery

Total employment since January 2020, in thousands

