

Alabama Employment Situation Summary

National Employment Data

- Since President Biden took office, 5,875,000 jobs have been created nationwide, an average of 588,000 created each month.
- In the month of November, the latest for which national data are available, 210,000 jobs were created, and the unemployment rate dropped to 4.2%, outperforming expectations and reaching a new pandemic-era low.
- The unemployment rate went down for adult men (4.0%), adult women (4.0%), white workers (3.7%), Asian workers (3.8%), Hispanic workers (5.2%) and Black workers (6.7%).

State Employment Data

- Since President Biden took office, 39,800 jobs have been created in Alabama.
- In the month of November, the latest for which state-level data are available, 4,400 jobs were lost in Alabama.

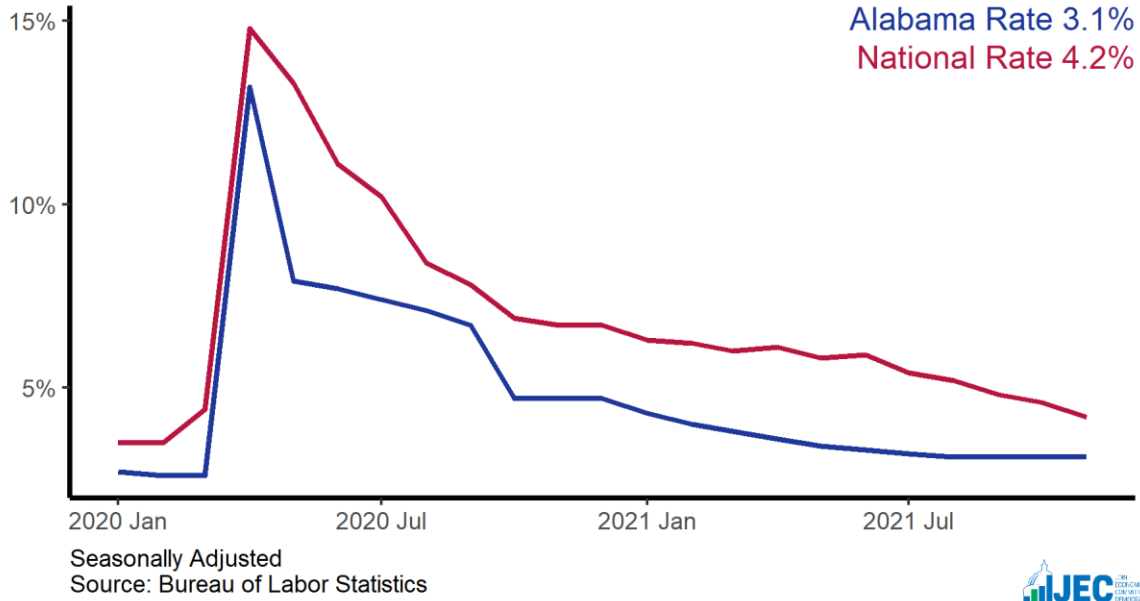
Sector	Change in Total Jobs in November	Jobs Recovered	Change in Total Jobs Since January
Total Nonfarm, Alabama	-4,400	87%	39,800
Construction, Alabama	1,100	78%	-1,800
Government, Alabama	800	74%	4,900
Manufacturing, Alabama	-500	91%	3,300
Leisure and Hospitality, Alabama	-1,100	90%	11,100
Retail Trade, Alabama	-1,500	104%	4,900
Education and Health Services, Alabama	-1,500	70%	6,400
Professional and Business Services, Alabama	-3,100	97%	700

Source: Bureau of Labor Statistics

Note: Positive change reflects net job creation. "Recovered" refers to the share of jobs recovered since the pandemic low point as a share of jobs lost during the pandemic. Jobs lost during the pandemic are measured as the difference between the number of jobs in the industry in February 2020 and the number at the "low point" of the pandemic--the month with the fewest people employed in a given industry. The month of the low point varies by industry.

Alabama Unemployment Rate

State and national unemployment rates, since January 2020



Alabama Jobs Recovery

Total employment since January 2020, in thousands

