

JOINT ECONOMIC COMMITTEE

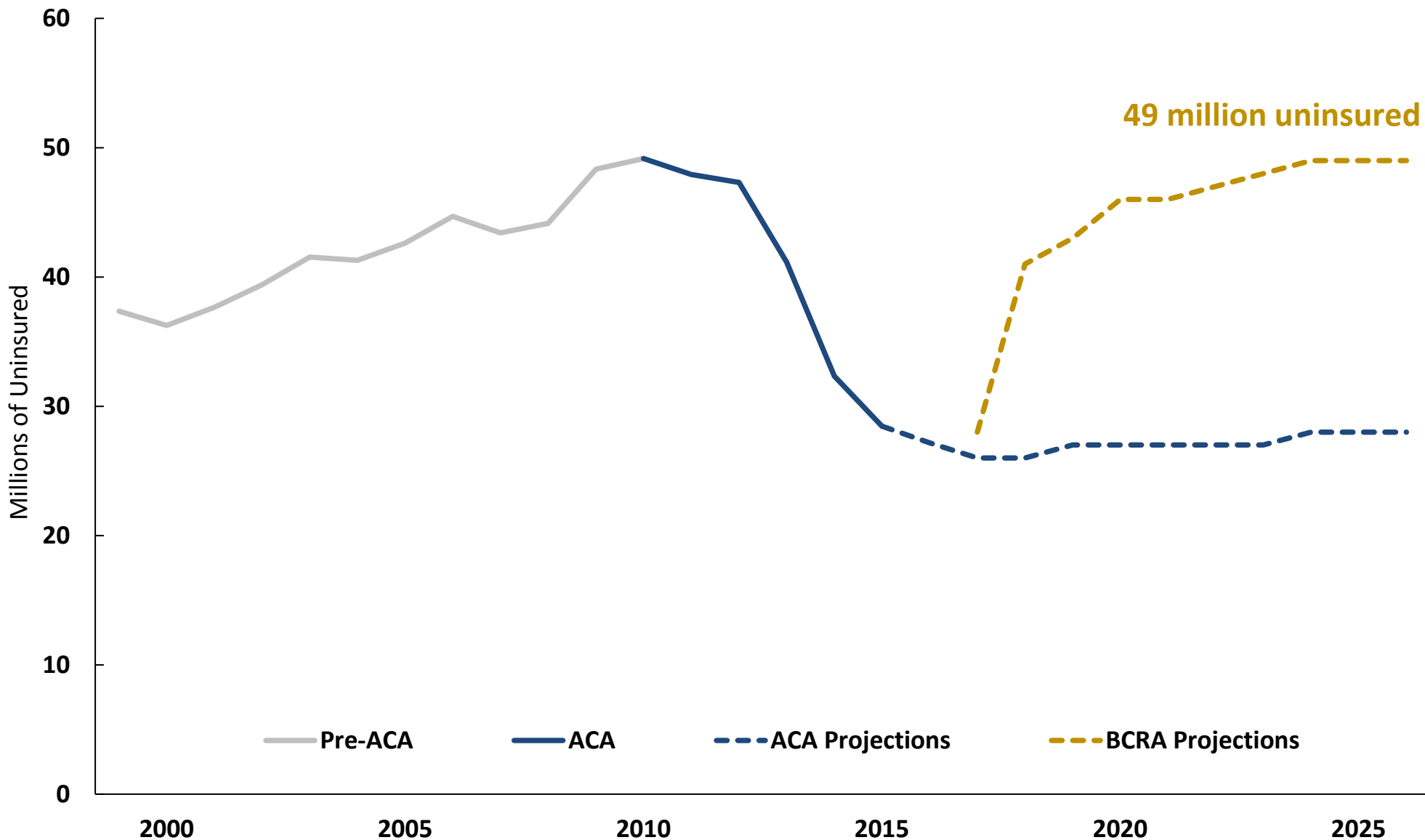
U.S. SENATOR MARTIN HEINRICH, RANKING MEMBER



Senate TrumpCare Charts Packet

June 28, 2017

Number of Uninsured Projected to Skyrocket To Pre-ACA Levels Under Republican Plan



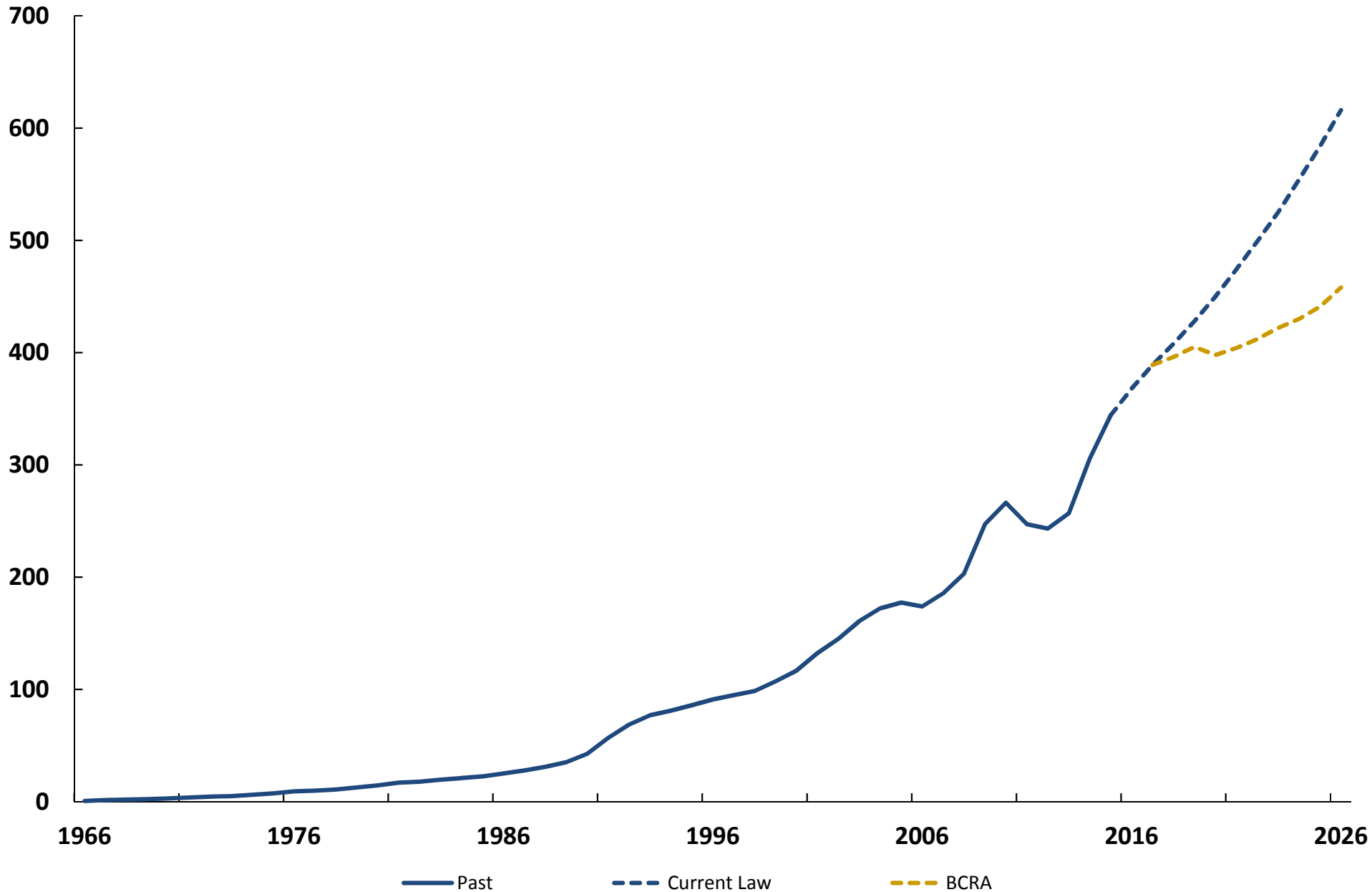
Source: Congressional Budget Office (CBO), Kaiser Family Foundation and Current Population Survey, Annual Social and Economic Supplement

Note: Number of individuals without health coverage under age 65; 1999-2015 data from Current Population Survey; 2016 data from Kaiser Family Foundation estimate; 2017-2026 data from 2017 CBO projections; BCRA refers to Republican Senate Plan and ACA refers to Affordable Care Act

Republican Plan Ends Medicaid as We Know It

Cuts \$722 billion, or nearly 20 percent, from Medicaid over 10 years

Billions of \$



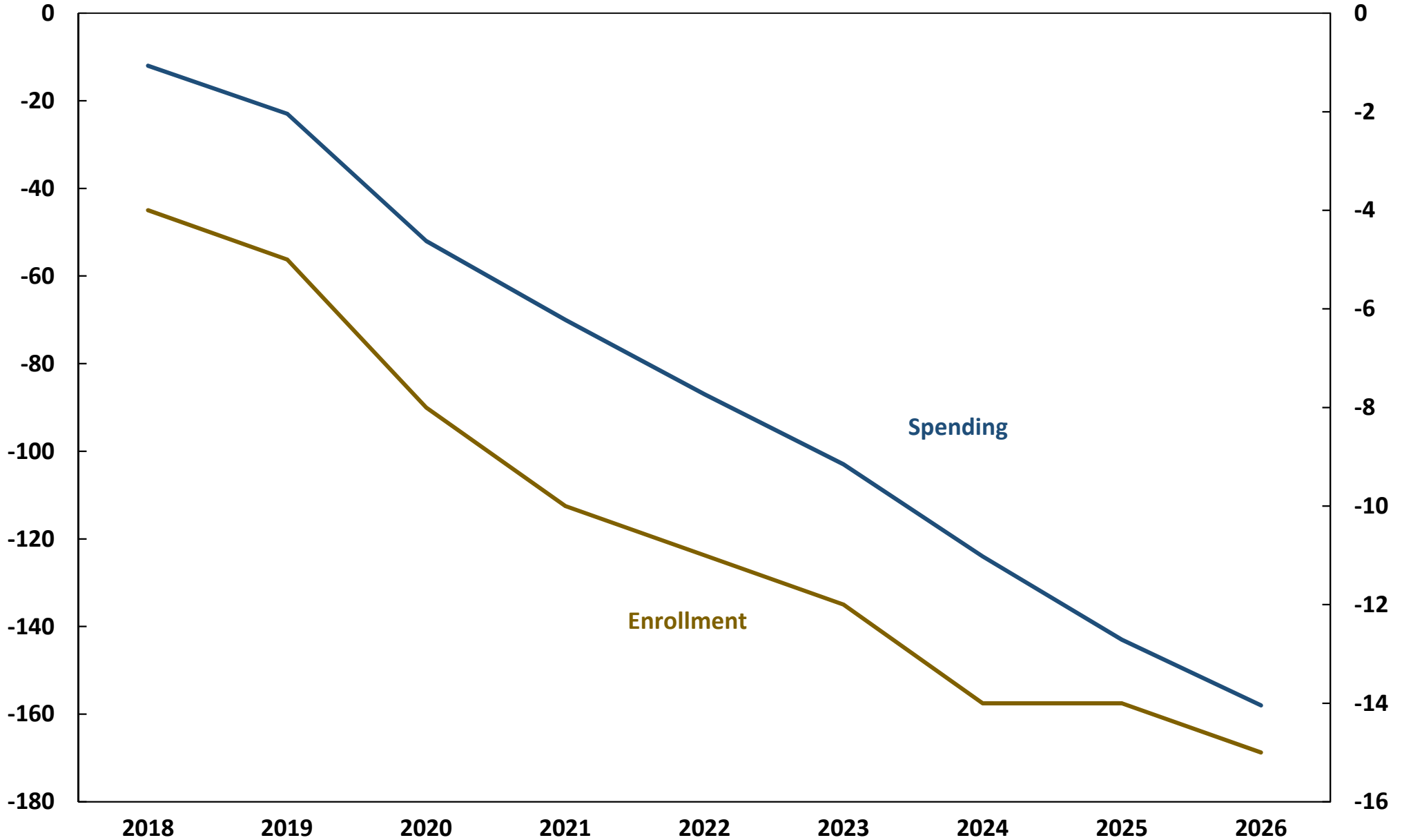
Source: Centers for Medicare and Medicaid Services, Congressional Budget Office
Note: BCRA refers to the Republican Senate plan, or the Better Care Reconciliation Act

Projected Republican Medicaid "Savings" Are Due to Drastic Cuts in Enrollment

Republicans would slash \$772 billion from Medicaid over 10 years, resulting in 15 million people losing coverage

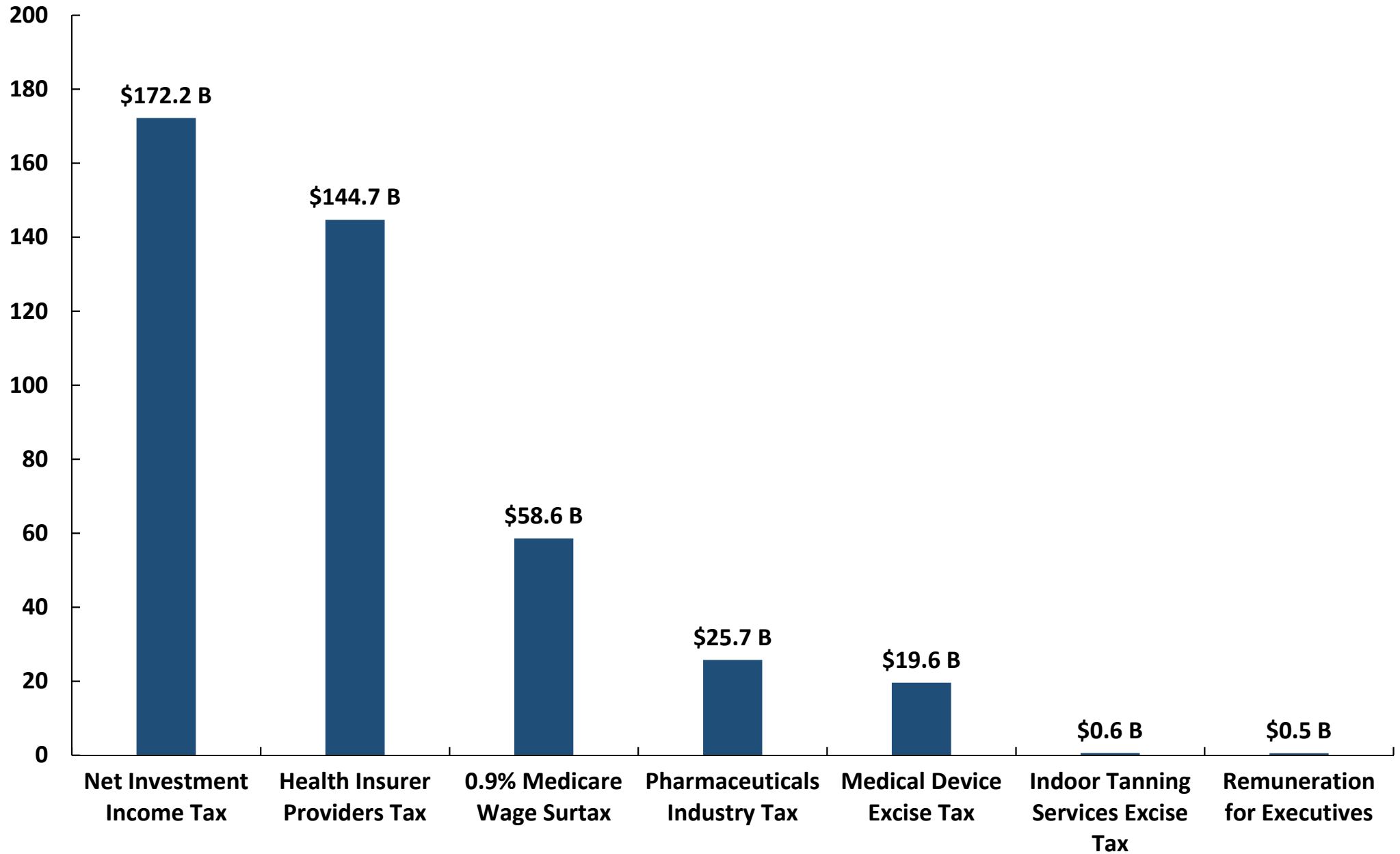
Billions of \$
In Spending

Millions of
Enrollees



Repealing the ACA Tax Provisions will Cost \$563 *Billion* from 2017-2026

Billions of \$

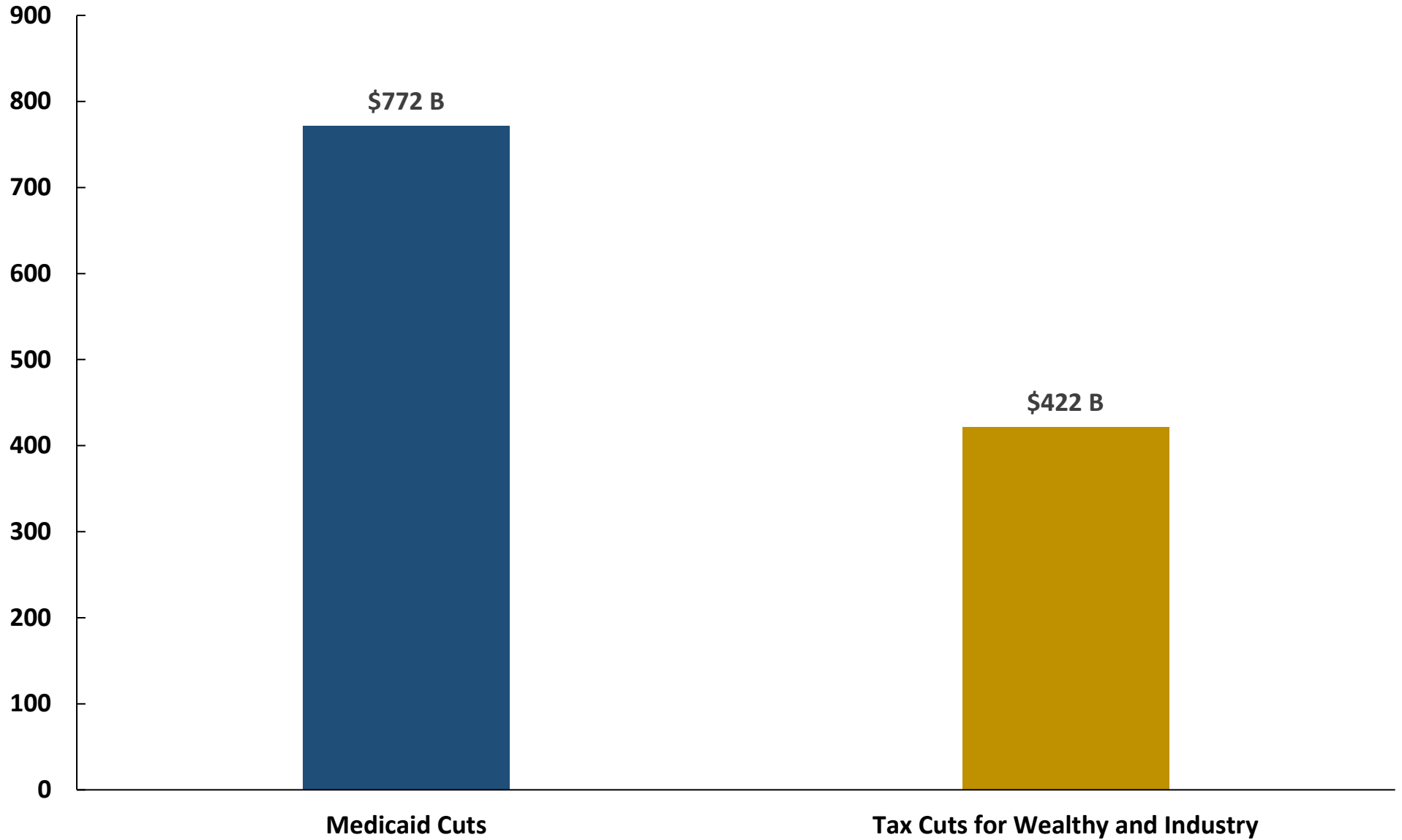


Source: Congressional Budget Office.

Note: Total cost of repealing the ACA tax provisions refers to revenue changes from all noncoverage provisions. Data shown for selected provisions will not add up to total in the title.

Tax Cuts for the Wealthy are Entirely Paid for by Health Care Cuts for Low- and Middle-Income Americans

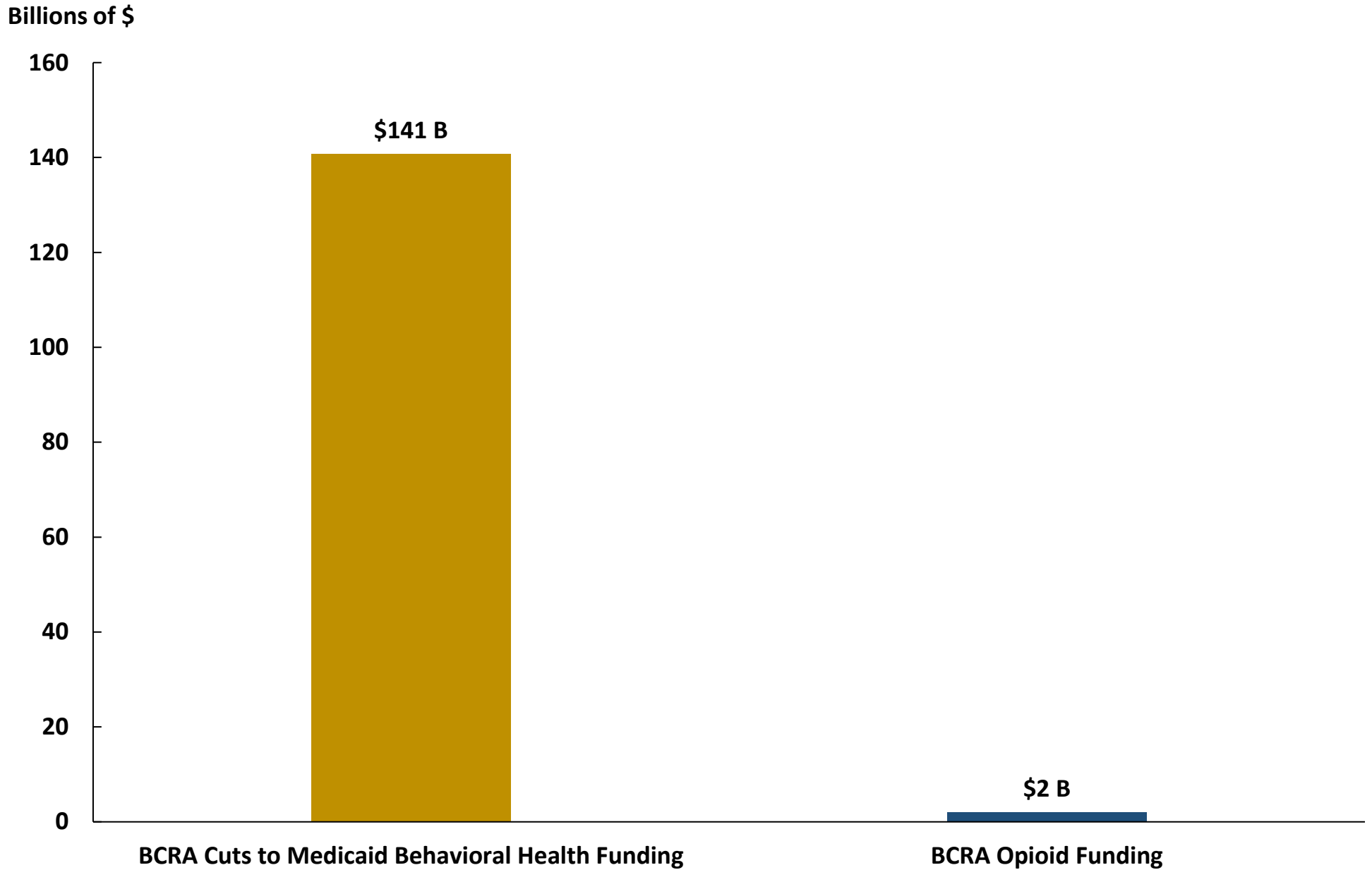
Billions of \$



Source: Congressional Budget Office

Note: Tax cuts include the repeal of the net investment tax, health insurer providers tax, Medicare wage surtax, pharmaceuticals industry tax, medical device tax, indoor tanning services tax, and remuneration for executives.

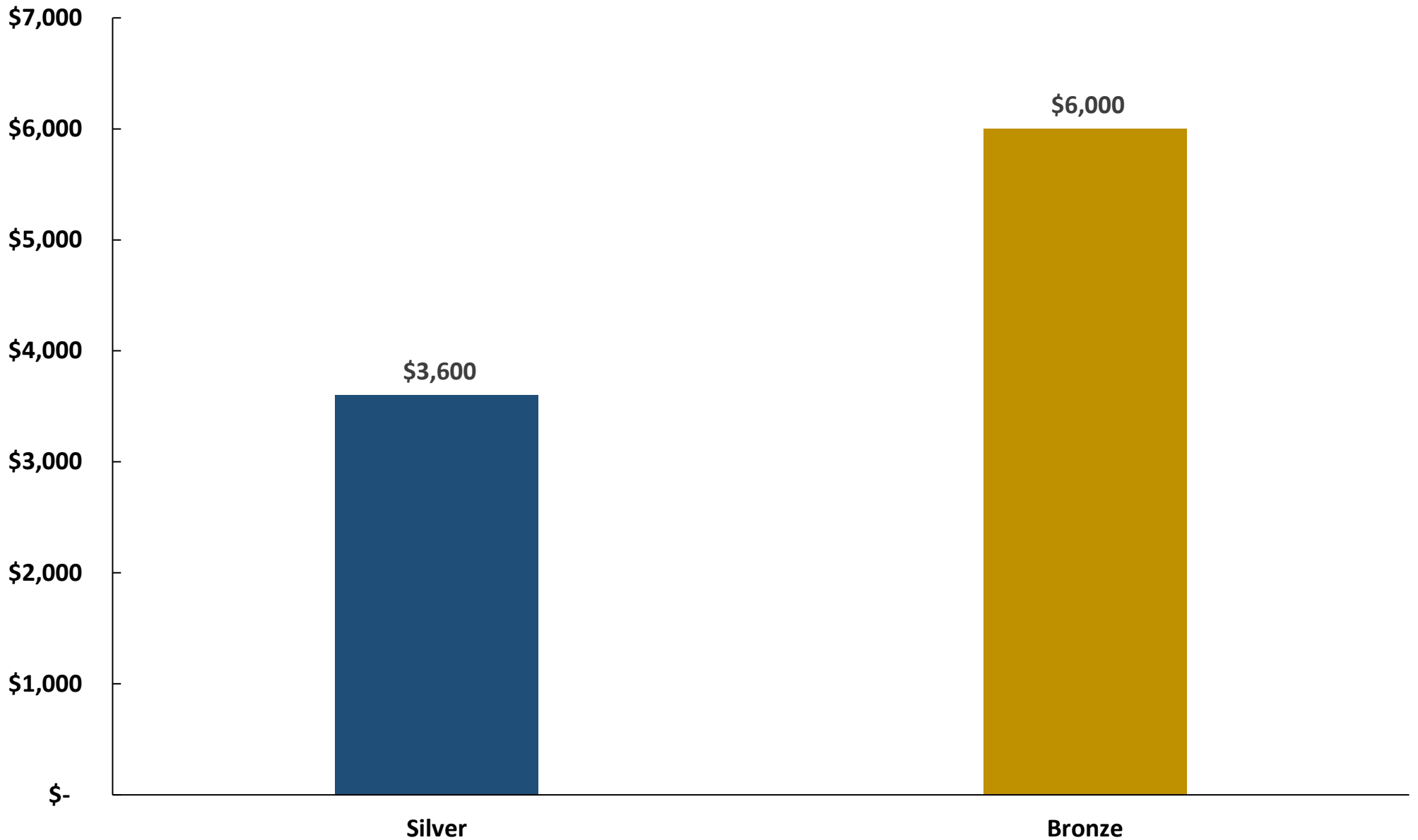
Republican Plan Strips Away Medicaid Funding for Opioid Treatment While Providing Only A Fraction of the Costs



Source: JEC Democratic staff calculations based on Congressional Budget Office, Centers for Medicare and Medicaid Services, and MACPAC
Note: BCRA cuts are based on projected cuts to Medicaid and total Medicaid behavioral health spending.

Republican Plan Will Increase Deductibles and Offer Less Care

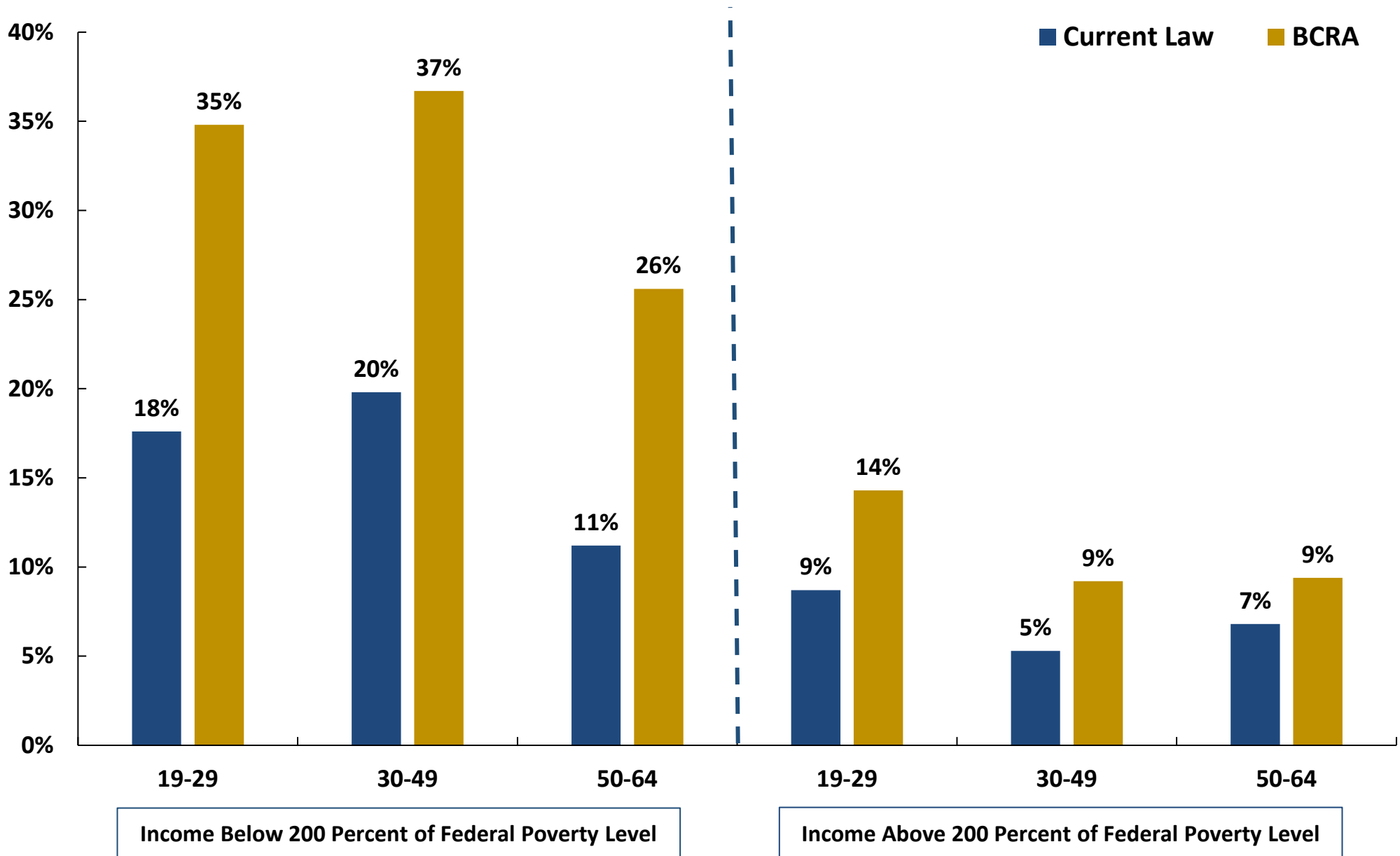
CBO projects benchmark plan under Republican plan will have deductibles similar to current Bronze plan (\$6,000)



Source: Congressional Budget Office

Note: Bronze and silver plan deductibles are for current law under the Affordable Care Act. Current law benchmark plans are based on a silver plan. CBO projects that new benchmark plans under BCRA will have similar deductibles to a bronze plan under current law.

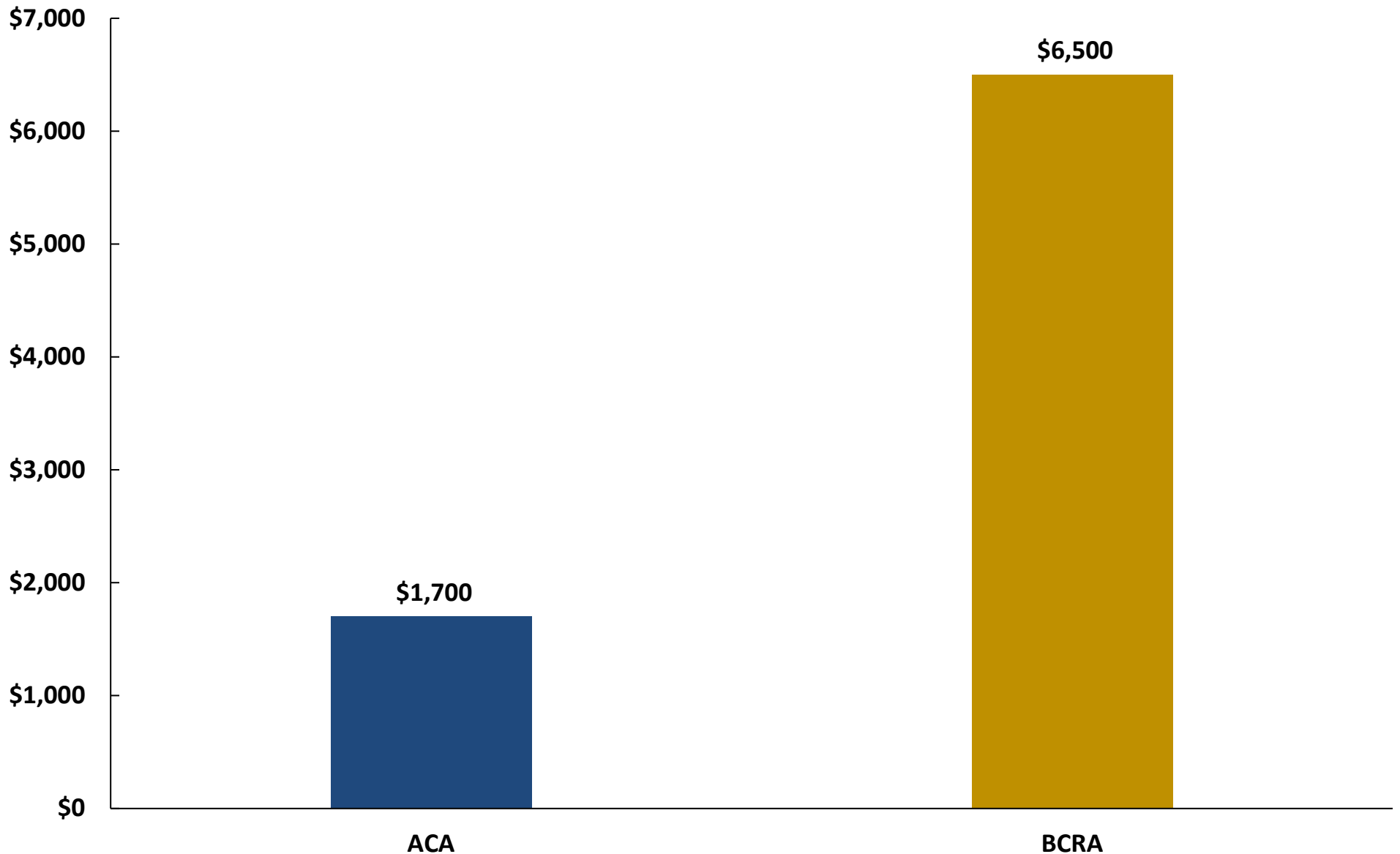
Republican Plan Drastically Raises Uninsured Rate Across Age Groups and Income Levels



Source: Congressional Budget Office

Note: BCRA refers to Republican Senate Plan titled the Better Care Reconciliation Act and current law refers to Affordable Care Act

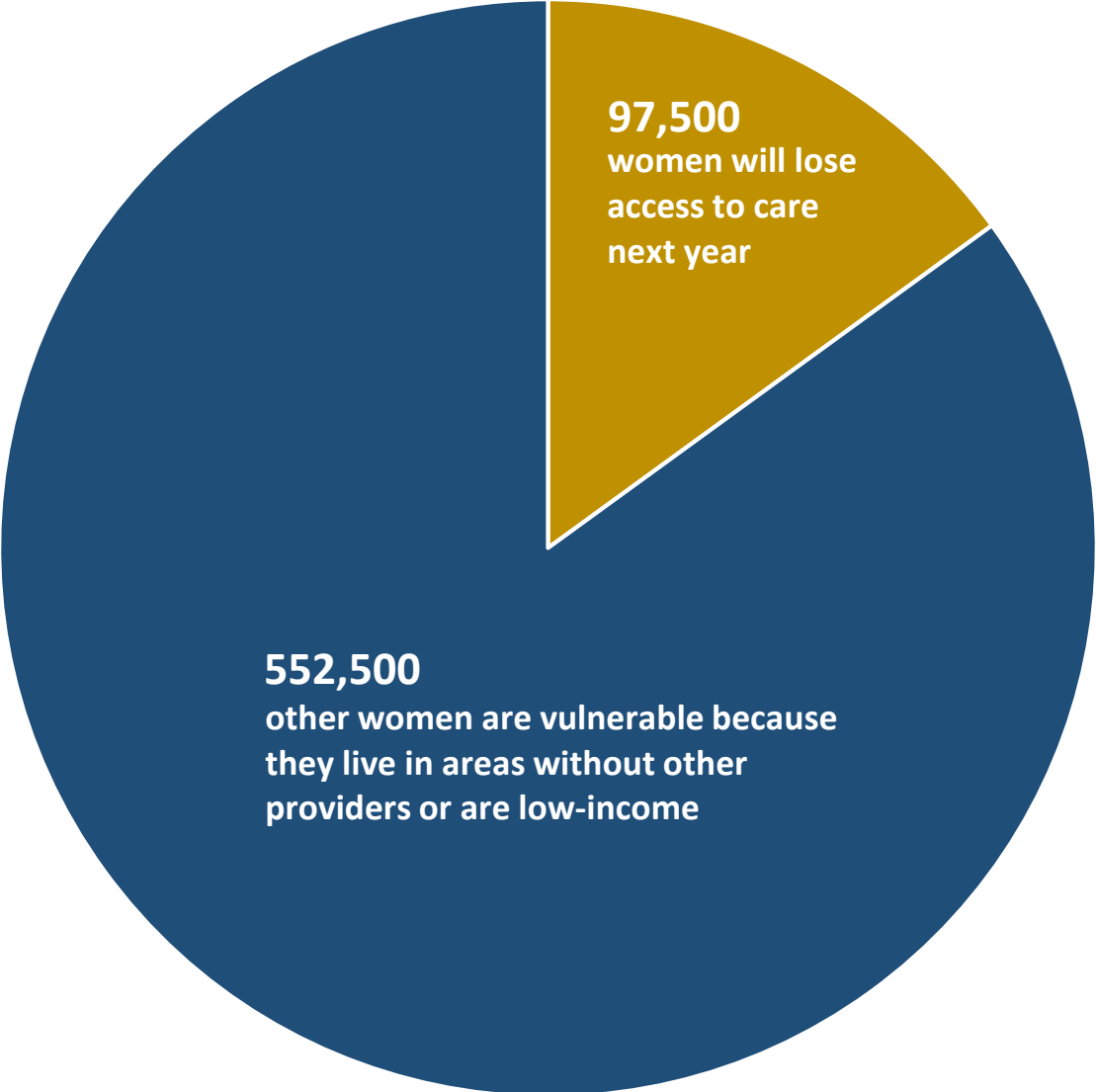
Net Premiums Could Increase for Older, Poor Americans by Nearly 4 Times Under Republican Plan



Source: Congressional Budget Office

Note: Illustrative example of a 64-year-old single individual with annual income of \$26,500 (175 percent of the federal poverty line) in 2026 living in a state not requesting waivers; BCRA refers to Republican Senate Plan titled the Better Care Reconciliation Act and ACA refers to Affordable Care Act

Republican Plan Directly Threatens Access to Care for 97,500 Women Next Year



Source: JEC Democratic staff calculations based on Congressional Budget Office

Note: Calculations based on the number of Planned Parenthood clients and previous CBO and Health Resources & Services Administration estimates of the proportion of women who may be affected by defunding Planned Parenthood.