



North Dakota Employment Report

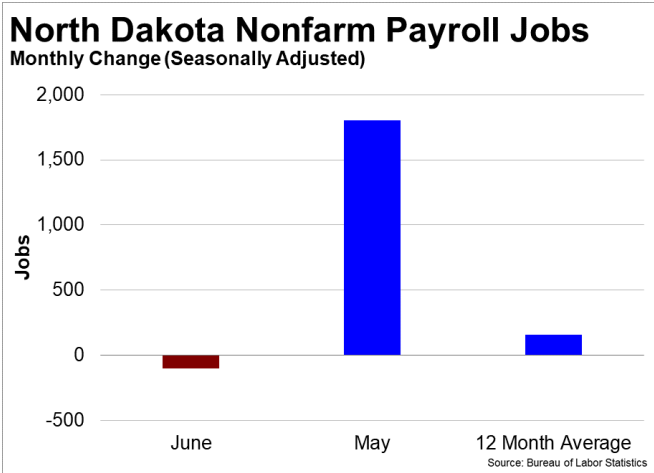
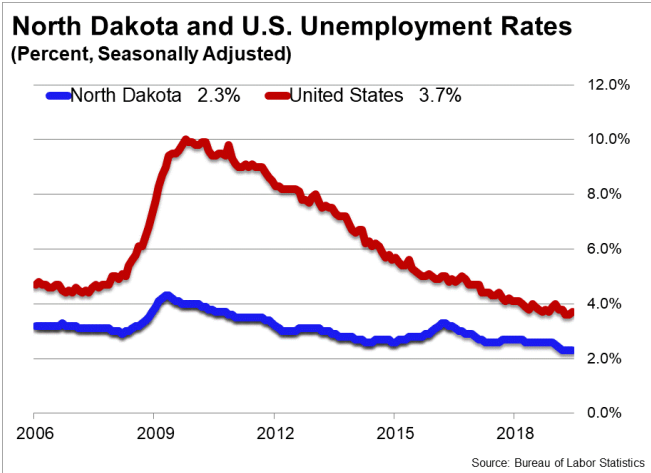
Joint Economic Committee

Senator Mike Lee, Chairman

July 19, 2019

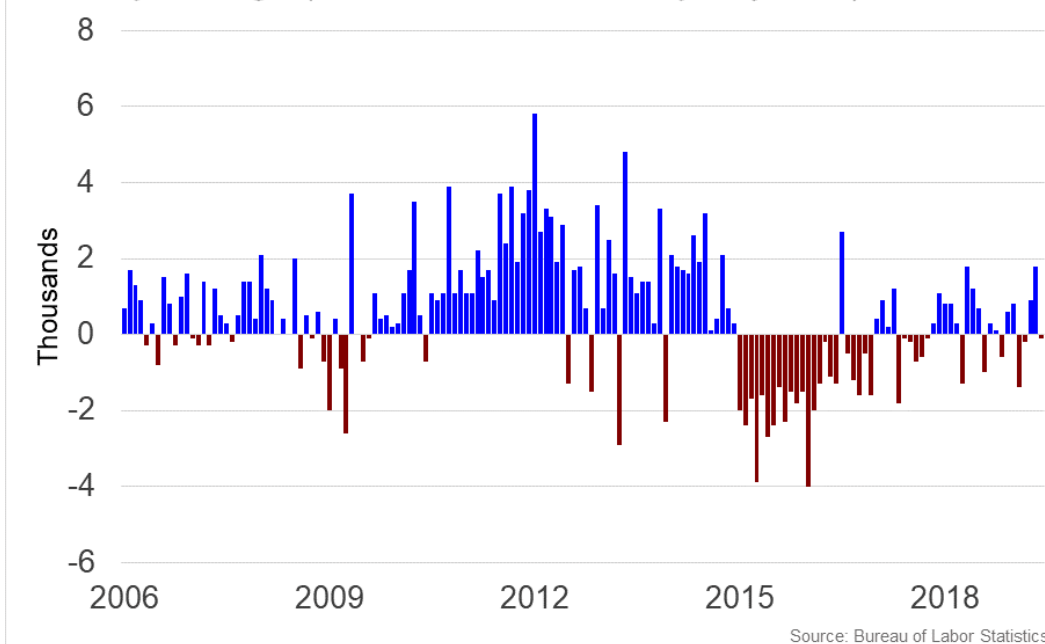
Summary

- **North Dakota lost 100 jobs and the unemployment rate was unchanged at 2.3 percent in June** according to Bureau of Labor Statistics (BLS) data.
- **Over the past twelve months, North Dakota added 1,900 jobs** and the unemployment rate fell by 0.3 percentage point from 2.6 percent.
- **In June, North Dakota's private sector lost 200 jobs** and over the past twelve months it created 2,000 jobs.
- The number of **unemployed North Dakotans rose by 104 in June**, and over the past year 2,424 North Dakotans found jobs.
- North Dakota's **labor force participation rate decreased to 69.3 percent** from 69.4 percent in June. Since last year, the labor force participation rate fell 0.2 percentage point.
- The national unemployment rate **rose by 0.1 percentage point to 3.7 percent in June**. State employment and unemployment data for July is scheduled for release on August 16, 2019. The national employment situation report for July will be released on Friday, August 2, 2019.



North Dakota Nonfarm Payroll Jobs

Monthly Change (Thousands, Seasonally Adjusted)



North Dakota Payroll Employment

North Dakota lost 100 jobs, or 0.02 percent, on a seasonally adjusted basis during June. In the prior month, North Dakota added 1,800 jobs. Over the past twelve months, nonfarm payrolls in North Dakota increased by 1,900, or 0.44 percent. North Dakota nonfarm payroll employment has increased in 7 of the past 12 months.

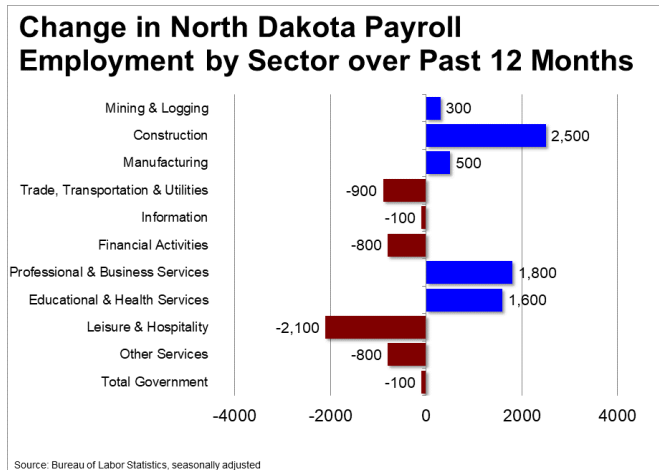
Nationally, nonfarm payrolls increased by 224,000 jobs in June, or 0.15 percent. Over the 12-month period ending June 2019, nonfarm payrolls grew by 2,301,000 jobs, or 1.54 percent. North Dakota ranks 44th among the 50 states and the District of Columbia for percentage gain in nonfarm payroll employment over the past 12 months.

During June, North Dakota's private-sector lost 200 jobs, or 0.06 percent. The private-sector in North Dakota added 1,700 jobs in the prior month. Over the past twelve months, private-sector payrolls in North Dakota increased by 2,000, or 0.57 percent. North Dakota private-sector payroll employment has increased in 8 of the past 12 months.

Nationally, private-sector payroll jobs increased by 191,000 jobs in June, or 0.15 percent. Over the past 12 months, the nation's economy has added 2,201,000 jobs in the private-sector, an increase of 1.74 percent. North Dakota ranks 42nd among the 50 states and the District of Columbia for percentage gain in private-sector payroll employment over the past 12 months.

The best performing sectors on a seasonally adjusted basis during June were Trade, Transportation & Utilities (+700), Mining & Logging (+200), and Construction (+200). The poorest performing sectors during the month were Leisure & Hospitality (-400) and Educational & Health Services (-300).

The best performing sectors during the last twelve months were Construction (+2,500) and Professional & Business Services (+1,800). The poorest performing sectors during the last twelve months were Leisure & Hospitality (-2,100) and Trade, Transportation & Utilities (-900).



North Dakota Labor Force Statistics

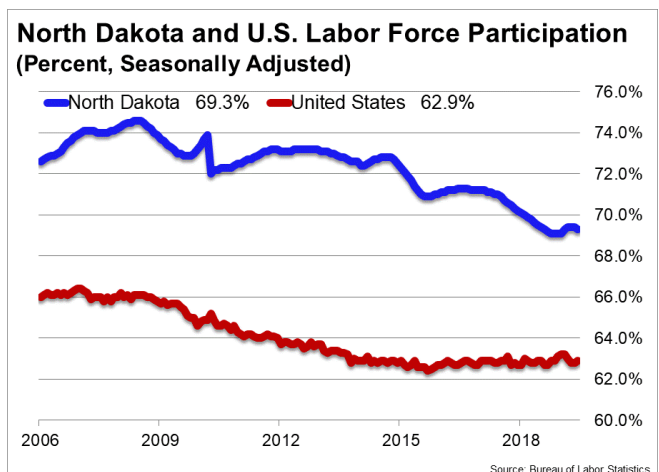
Labor Force Participation

The labor force participation rate in North Dakota declined to 69.3 percent in June from 69.4 percent the prior month. At 69.3 percent, North Dakota has one of the five highest labor force participation rates in the nation. The labor force participation rate in North Dakota is unchanged from a year earlier. The labor force participation rate is the percentage of the civilian noninstitutionalized population age 16 and older who are employed or actively looking for work.

The 10-year high for the labor force participation rate in North Dakota was 73.9 percent in March 2010. The series high for the labor force participation rate in North Dakota occurred in July 2008 when the labor force participation rate hit 74.6 percent. The 10-year low for the labor force participation rate was 69.1 percent in January 2019. The series low for the labor force participation rate occurred in March 1976 when the labor force participation rate hit 62.1 percent. The national labor force participation rate rose by 0.1 percentage point to 62.9 percent in June, but remains near its 41-year low of 62.4 percent.

Employment-to-Population Ratio

The employment-to-population ratio, or the percentage of the North Dakota civilian noninstitutionalized population 16 years and older counted as employed, declined to 67.7



percent in June from 67.9 percent the prior month. At 67.7 percent, North Dakota has the highest employment-to-population ratio in the nation. The employment-to-population ratio in North Dakota is unchanged from a year earlier.

The 10-year high for the employment-to-population ratio in North Dakota was 71.0 percent in December 2012. The series high for the employment-to-population ratio in North Dakota occurred in May 2008 when the employment-to-population ratio hit 72.4 percent. The 10-year low for the employment-to-population ratio was 67.3 percent in December 2018. The series low for the employment-to-population ratio occurred in April 1977 when the employment-to-population ratio was 60.2 percent.

The national employment-to-population ratio held steady at 60.6 percent in June. That rate was 0.2 percentage point higher than a year earlier. The all-time high for the employment-to-population ratio was 64.7 in April 2000. The 10-year high for the employment-to-population ratio was 63.4 percent in December 2006. The recent low occurred in October 2013 when the employment-to-population ratio dipped to 58.2 percent. The last time the employment-to-population ratio posted a reading lower than 58.2 percent was July 1983.

