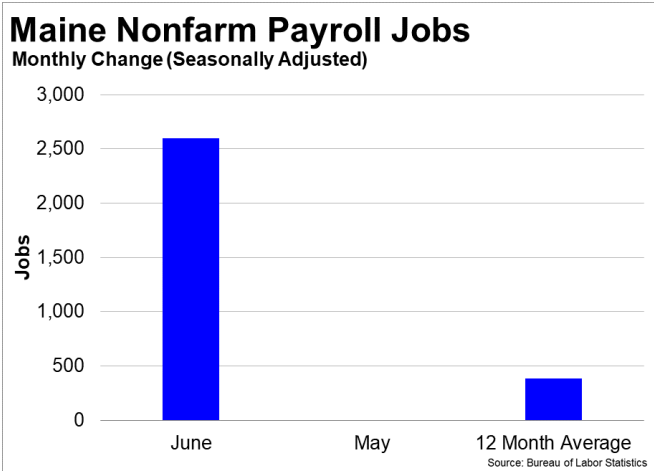
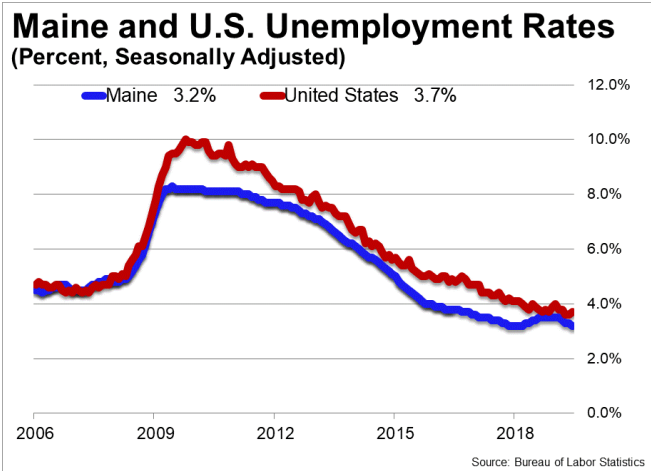




July 19, 2019

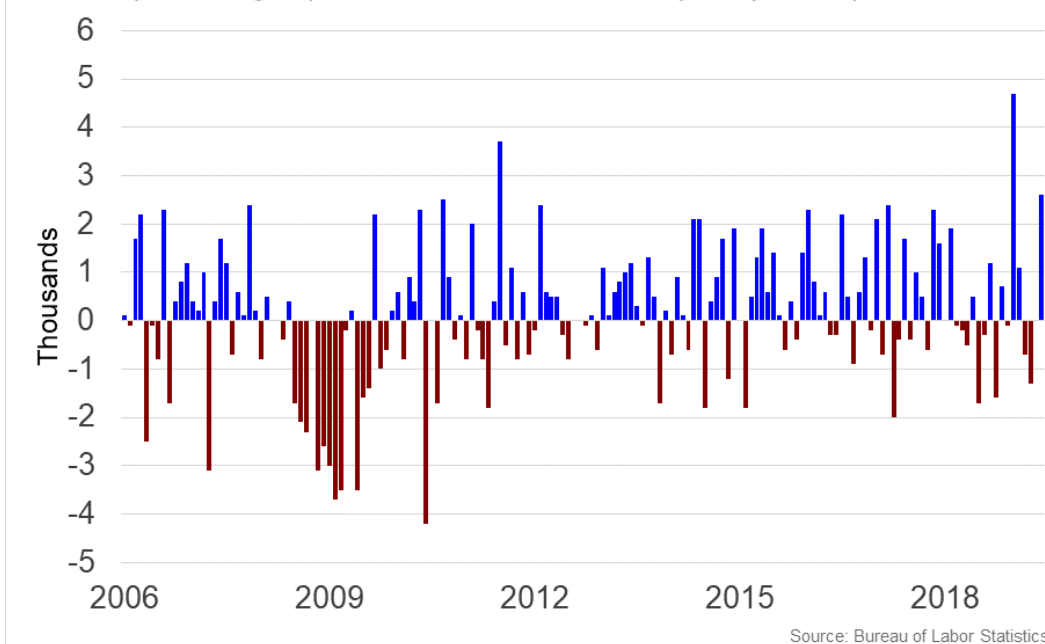
**Summary**

- **Maine added 2,600 jobs and the unemployment rate declined by 0.1 percentage point to 3.2 percent in June** according to Bureau of Labor Statistics (BLS) data.
- **Over the past twelve months, Maine added 4,600 jobs** and the unemployment rate fell by 0.2 percentage point from 3.4 percent.
- **In June, Maine's private sector added 2,100 jobs** and over the past twelve months it created 4,000 jobs.
- The number of **unemployed Mainers fell by 719 in June**, and over the past year 3,375 Mainers lost jobs.
- Maine's **labor force participation rate decreased to 62.6 percent** from 62.8 percent in June. Since last year, the labor force participation rate fell 0.8 percentage point.
- The national unemployment rate **rose by 0.1 percentage point to 3.7 percent in June**. State employment and unemployment data for July is scheduled for release on August 16, 2019. The national employment situation report for July will be released on Friday, August 2, 2019.



# Maine Nonfarm Payroll Jobs

Monthly Change (Thousands, Seasonally Adjusted)



## Maine Payroll Employment

Maine added 2,600 jobs, or 0.41 percent, on a seasonally adjusted basis during June. In the prior month, Maine didn't add or lose jobs. Over the past twelve months, nonfarm payrolls in Maine increased by 4,600, or 0.73 percent. Maine nonfarm payroll employment has increased in 5 of the past 12 months.

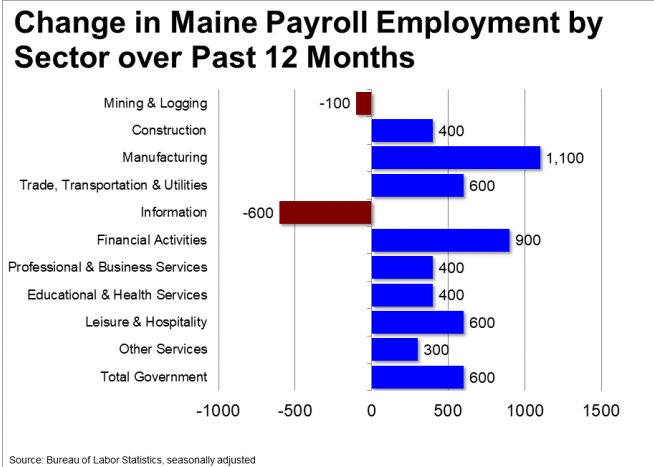
Nationally, nonfarm payrolls increased by 224,000 jobs in June, or 0.15 percent. Over the 12-month period ending June 2019, nonfarm payrolls grew by 2,301,000 jobs, or 1.54 percent. Maine ranks 36th among the 50 states and the District of Columbia for percentage gain in nonfarm payroll employment over the past 12 months.

During June, Maine's private-sector added 2,100 jobs, or 0.40 percent. The private-sector in Maine lost 200 jobs in the prior month. Over the past twelve months, private-sector payrolls in Maine increased by 4,000, or 0.76 percent. Maine private-sector payroll employment has increased in 5 of the past 12 months.

Nationally, private-sector payroll jobs increased by 191,000 jobs in June, or 0.15 percent. Over the past 12 months, the nation's economy has added 2,201,000 jobs in the private-sector, an increase of 1.74 percent. Maine ranks 39th among the 50 states and the District of Columbia for percentage gain in private-sector payroll employment over the past 12 months.

The best performing sectors on a seasonally adjusted basis during June were Construction (+800), Leisure & Hospitality (+500), and Total Government (+500). Four or more sectors tied for the poorest performing on a seasonally adjusted basis during June.

The best performing sectors during the last twelve months were Manufacturing (+1,100) and Financial Activities (+900). The poorest performing sectors during the last twelve months were Information (-600) and Mining & Logging (-100).



## Maine Labor Force Statistics

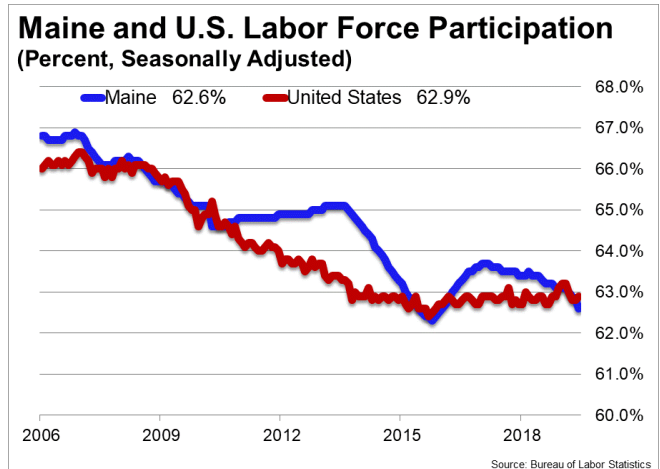
### *Labor Force Participation*

The labor force participation rate in Maine declined to 62.6 percent in June from 62.8 percent the prior month. Among the 50 states and the District of Columbia, 28 have a higher labor force participation rate than Maine. The labor force participation rate in Maine is unchanged from a year earlier. The labor force participation rate is the percentage of the civilian noninstitutionalized population age 16 and older who are employed or actively looking for work.

The 10-year high for the labor force participation rate in Maine was 65.4 percent in July 2009. The series high for the labor force participation rate in Maine occurred in February 2000 when the labor force participation rate hit 68.8 percent. The 10-year low for the labor force participation rate was 62.3 percent in October 2015. The series low for the labor force participation rate occurred in March 1978 when the labor force participation rate hit 59.7 percent. The national labor force participation rate rose by 0.1 percentage point to 62.9 percent in June, but remains near its 41-year low of 62.4 percent.

### *Employment-to-Population Ratio*

The employment-to-population ratio, or the percentage of the Maine civilian noninstitutionalized population 16 years and older counted as employed, was unchanged at 60.7 percent in June. Among the 50 states and the District of Columbia, 24 have higher employment-to-population ratios than Maine.



The employment-to-population ratio in Maine is 0.5 percentage point lower than a year earlier.

The 10-year high for the employment-to-population ratio in Maine was 61.4 percent in March 2018. The series high for the employment-to-population ratio in Maine occurred in April 2000 when the employment-to-population ratio hit 66.4 percent. The 10-year low for the employment-to-population ratio was 59.3 percent in June 2010. The series low for the employment-to-population ratio occurred in December 1977 when the employment-to-population ratio was 55.5 percent.

The national employment-to-population ratio held steady at 60.6 percent in June. That rate was 0.2 percentage point higher than a year earlier. The all-time high for the employment-to-population ratio was 64.7 in April 2000. The 10-year high for the employment-to-population ratio was 63.4 percent in December 2006. The recent low occurred in October 2013 when the employment-to-population ratio dipped to 58.2 percent. The last time the employment-to-population ratio posted a reading lower than 58.2 percent was July 1983.

