

# Delaware Employment Report

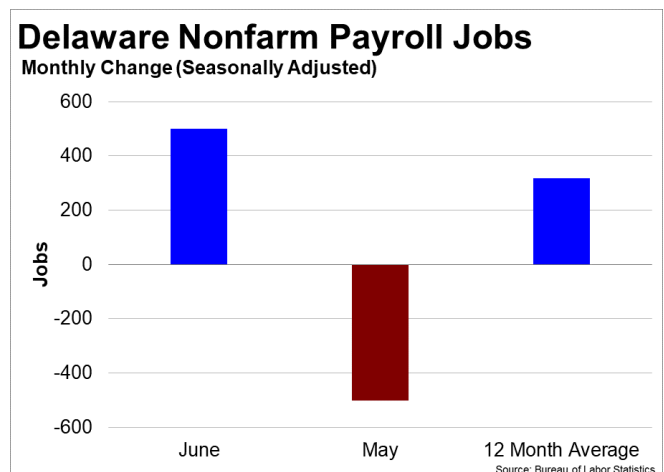
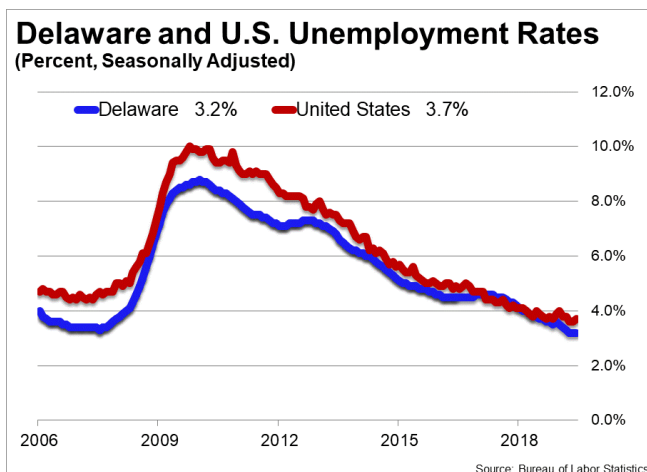
## Joint Economic Committee

Senator Mike Lee, Chairman

July 19, 2019

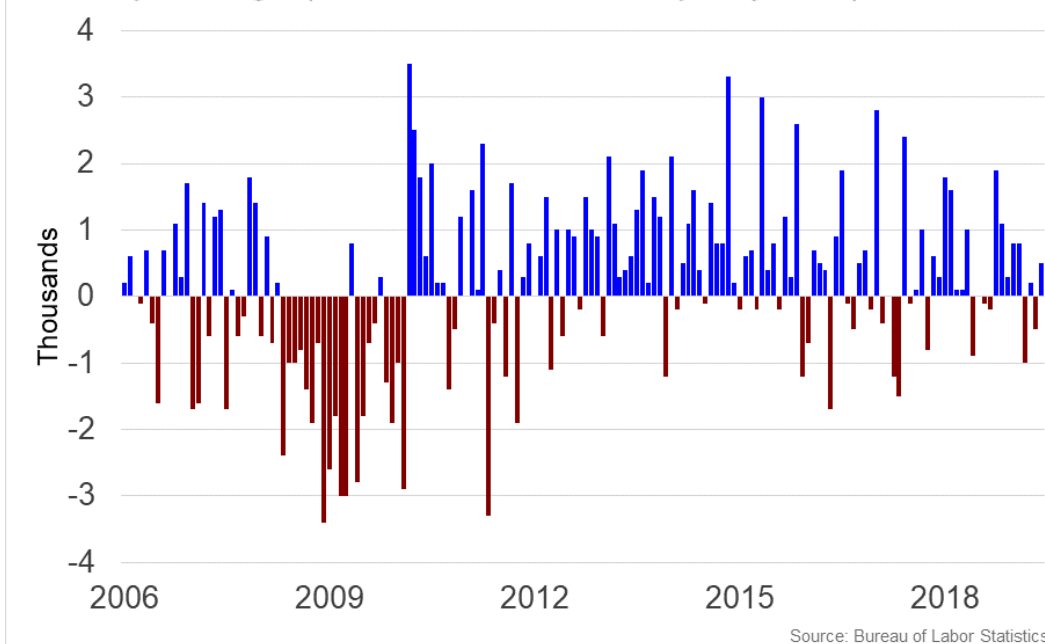
### Summary

- **Delaware added 500 jobs and the unemployment rate was unchanged at 3.2 percent in June** according to Bureau of Labor Statistics (BLS) data.
- **Over the past twelve months, Delaware added 3,800 jobs** and the unemployment rate fell by 0.6 percentage point from 3.8 percent.
- **In June, Delaware's private sector added 200 jobs** and over the past twelve months it created 2,000 jobs.
- The number of **unemployed Delawareans fell by 11 in June**, and over the past year 8,618 Delawareans found jobs.
- Delaware's **labor force participation rate remains unchanged** from 62.6 percent in June. Since last year, the labor force participation rate is unchanged.
- The national unemployment rate **rose by 0.1 percentage point to 3.7 percent in June**. State employment and unemployment data for July is scheduled for release on August 16, 2019. The national employment situation report for July will be released on Friday, August 2, 2019.



# Delaware Nonfarm Payroll Jobs

Monthly Change (Thousands, Seasonally Adjusted)



## Delaware Payroll Employment

Delaware added 500 jobs, or 0.11 percent, on a seasonally adjusted basis during June. In the prior month, Delaware lost 500 jobs. Over the past twelve months, nonfarm payrolls in Delaware increased by 3,800, or 0.82 percent. Delaware nonfarm payroll employment has increased in 7 of the past 12 months.

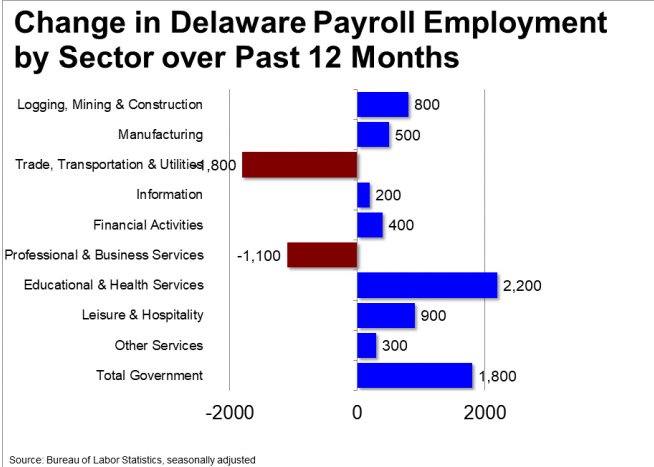
Nationally, nonfarm payrolls increased by 224,000 jobs in June, or 0.15 percent. Over the 12-month period ending June 2019, nonfarm payrolls grew by 2,301,000 jobs, or 1.54 percent. Delaware ranks 34th among the 50 states and the District of Columbia for percentage gain in nonfarm payroll employment over the past 12 months.

During June, Delaware's private-sector added 200 jobs, or 0.05 percent. The private-sector in Delaware lost 800 jobs in the prior month. Over the past twelve months, private-sector payrolls in Delaware increased by 2,000, or 0.51 percent. Delaware private-sector payroll employment has increased in 7 of the past 12 months.

Nationally, private-sector payroll jobs increased by 191,000 jobs in June, or 0.15 percent. Over the past 12 months, the nation's economy has added 2,201,000 jobs in the private-sector, an increase of 1.74 percent. Delaware ranks 43rd among the 50 states and the District of Columbia for percentage gain in private-sector payroll employment over the past 12 months.

The best performing sectors on a seasonally adjusted basis during June were Other Services (+400) and Total Government (+300). The poorest performing sectors during the month were Professional & Business Services (-200), Financial Activities (-100), and Leisure & Hospitality (-100).

The best performing sectors during the last twelve months were Educational & Health Services (+2,200) and Total Government (+1,800). The poorest performing sectors during the last twelve months were Trade, Transportation & Utilities (-1,800) and Professional & Business Services (-1,100).



## Delaware Labor Force Statistics

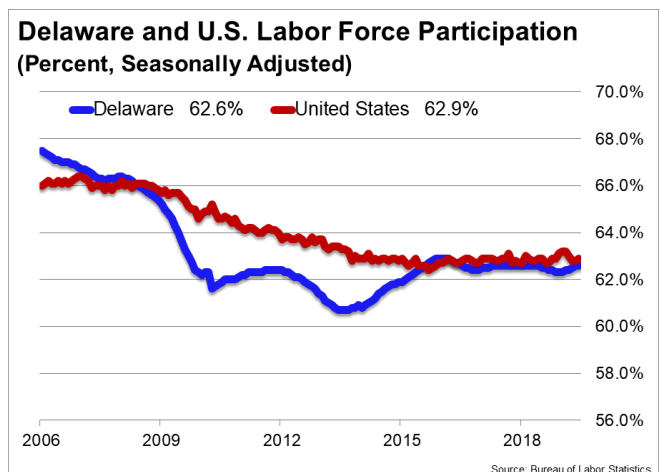
### *Labor Force Participation*

The labor force participation rate in Delaware was unchanged at 62.6 percent in June. Among the 50 states and the District of Columbia, 28 have a higher labor force participation rate than Delaware. The labor force participation rate in Delaware is unchanged from a year earlier. The labor force participation rate is the percentage of the civilian noninstitutionalized population age 16 and older who are employed or actively looking for work.

The 10-year high for the labor force participation rate in Delaware was 63.6 percent in July 2009. The series high for the labor force participation rate in Delaware occurred in January 1990 when the labor force participation rate hit 71.0 percent. The 10-year low for the labor force participation rate was 60.7 percent in September 2013. This also represents the series low for the labor force participation rate in Delaware. The national labor force participation rate rose by 0.1 percentage point to 62.9 percent in June, but remains near its 41-year low of 62.4 percent.

### *Employment-to-Population Ratio*

The employment-to-population ratio, or the percentage of the Delaware civilian noninstitutionalized population 16 years and older counted as employed, was unchanged at 60.6 percent in June. Among the 50 states and the District of Columbia, 25 have higher employment-to-population ratios than



Delaware. The employment-to-population ratio in Delaware is 0.4 percentage point higher than a year earlier.

The 10-year high for the employment-to-population ratio in Delaware was 60.6 percent in June 2019. The series high for the employment-to-population ratio in Delaware occurred in January 1990 when the employment-to-population ratio hit 68.3 percent. The 10-year low for the employment-to-population ratio was 56.2 percent in April 2010. The series low for the employment-to-population ratio occurred in May 2010 when the employment-to-population ratio was 56.2 percent.

The national employment-to-population ratio held steady at 60.6 percent in June. That rate was 0.2 percentage point higher than a year earlier. The all-time high for the employment-to-population ratio was 64.7 in April 2000. The 10-year high for the employment-to-population ratio was 63.4 percent in December 2006. The recent low occurred in October 2013 when the employment-to-population ratio dipped to 58.2 percent. The last time the employment-to-population ratio posted a reading lower than 58.2 percent was July 1983.

